

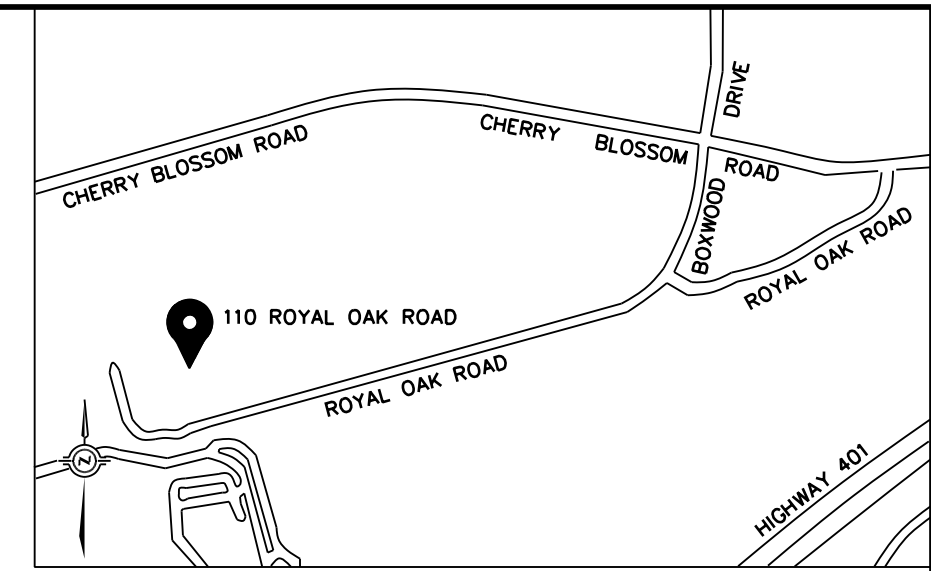
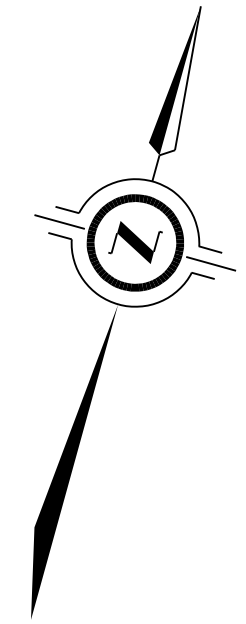
(OPENED BY BY-LAW 305-86, INST. No. 666256) PART 13, PLAN 67R-2466  
**CHERRY BLOSSOM ROAD** PIN 03755-0002 (LT)

PART 11, PLAN 67R-2466  
 PIN 03768-0025 (LT)

PART 6,  
 PLAN 67R-2805  
 (EXAGGERATED)  
 PIN 03768-0021 (LT)

PART 2,  
 PLAN 67R-2919  
 (EXAGGERATED)  
 PIN 03768-0026 (LT)

PART 3,  
 PLAN 67R-2919  
 (EXAGGERATED)  
 S/T EASEMENT AS IN  
 INST. No. WS683126



KEY PLAN NOT TO SCALE  
 PLAN PREPARED FOR SEVERANCE APPLICATION

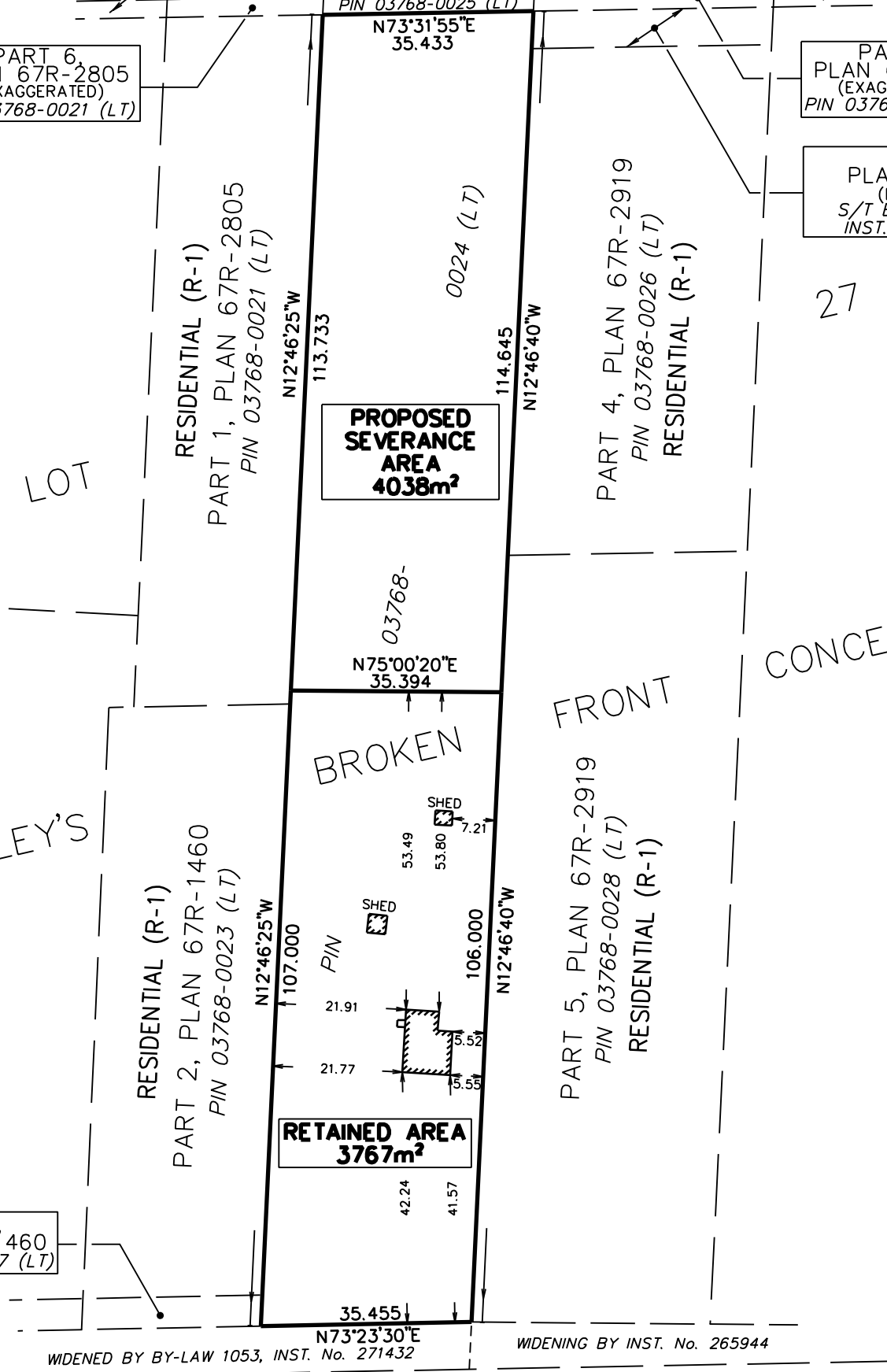
**PART OF LOT 27  
 BEASLEY'S BROKEN FRONT  
 CONCESSION**  
 CITY OF CAMBRIDGE  
 REGIONAL MUNICIPALITY OF WATERLOO

SCALE 1 : 1000

J.D. BARNES LIMITED  
 © COPYRIGHT 2021  
**METRIC** DISTANCES AND/OR COORDINATES SHOWN ON THIS PLAN ARE  
 IN METRES AND CAN BE CONVERTED TO FEET BY DIVIDING BY  
 0.3048.

MUNICIPAL ADDRESS: 110 ROYAL OAK DRIVE, CAMBRIDGE  
 ZONING: RESIDENTIAL (R-1)

- NOTES**
- DIMENSIONS ILLUSTRATED HEREON ARE BASED ON CURRENT FIELD WORK COMPLETED BY THIS OFFICE.
  - OWNER OF PIN 03768-0025 (LT) - ONTARIO LAND CORPORATION



WIDENED BY BY-LAW 1053, INST. No. 271432  
 WIDENING BY INST. No. 265944

**ROYAL OAK ROAD**  
 (PART OF LOT 27, BEASLEY'S BROKEN FRONT CONCESSION)  
 PIN 03768-0517 (LT)

<p><b>J.D. BARNES</b>                  LIMITED                  SURVEYING                  MAPPING                  GIS</p> <p>LAND INFORMATION SPECIALISTS                  4273 KING ST. E., #100, KITCHENER, ON, N2P 2E9                  T: (519) 578-2220 F: (519) 650-5625 www.jdbarnes.com</p>	CB	DRAWN
	GA	CHECKED
	DATED:	
	10/13/2021	
Ref. No.		21-40-369-00

H:\21-40-369\00\Drawing\21-40-369-00-sev.dgn  
 PLOTTED 10/13/2021