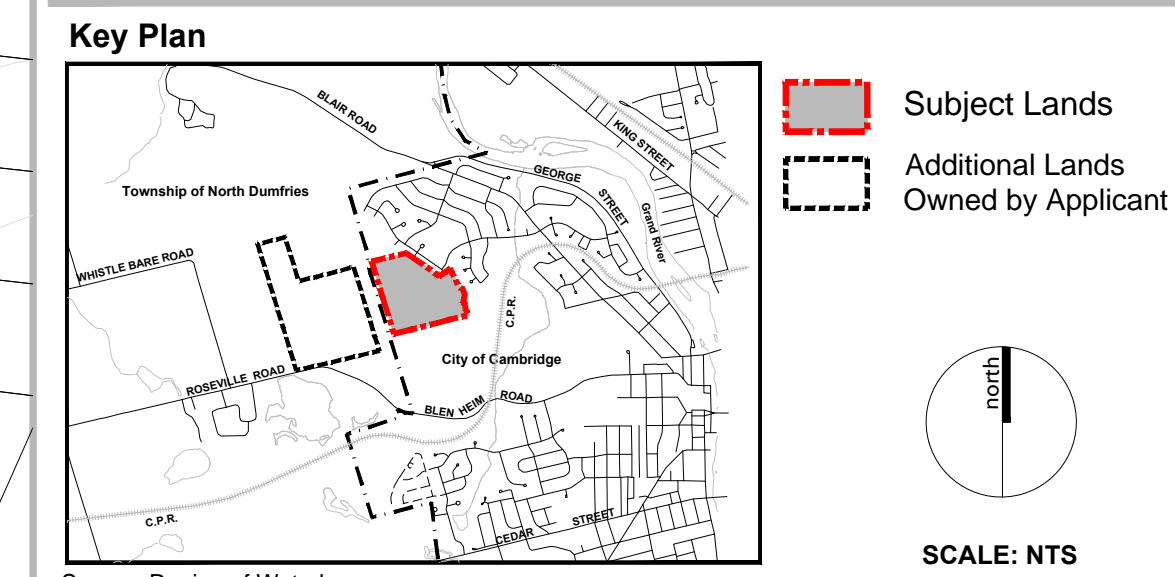


# DRAFT PLAN OF SUBDIVISION

**Legal Description**  
 PART OF SUBDIVISION LOT 1, CONCESSION 12  
 WEST OF THE GRAND RIVER,  
 FORMERLY TOWNSHIP OF NORTH DUMFRIES  
 CITY OF CAMBRIDGE, REGIONAL MUNICIPALITY OF WATERLOO

**Owner's Certificate**  
 I HEREBY AUTHORIZE MACDONALD TAMBLYN LORD CLARKSON PLANNING LIMITED TO SUBMIT THIS PLAN FOR APPROVAL.  
 DATE: *Mar 23/16* *Brian Domm*  
 Brian Domm, Owner (Brian Domm Farms Ltd.)

**Surveyor's Certificate**  
 I HEREBY CERTIFY THAT THE BOUNDARIES OF THE LAND TO BE SUBDIVIDED ON THIS PLAN AND THEIR RELATIONSHIP TO THE ADJACENT LANDS ARE ACCURATELY AND CORRECTLY SHOWN.  
 DATE: *FEB. 12, 2016* *Rod Lord*  
 Rod Lord, OLS (MacDonald Tamblin Lord Surveying Limited)



Revision No.	Date	Issued / Revision	By
5.	Sept. 21, 2017	Add Walkway block;	DGS
4.	Aug. 10, 2017	Add Priority Lots as blocks on the Draft Plan.	DGS
3.	Aug. 1, 2017	Revs. to various lot depths. Revise Area Schedule.	DGS
2.	May 16, 2017	Revs. as per comments from City of Cambridge Parks Dept.	DGS
1.	Mar. 24, 2016	For Submittal to City	DGS

**Additional Information Required Under Section 51(17) of the Planning Act R.S.O. 1990, c.P.13 as Amended**

A. AS SHOWN	B. AS SHOWN	C. AS SHOWN
D. RESIDENTIAL, MULTIPLE RESIDENTIAL, SCHOOL, PARK, OPEN SPACE, STORMWATER MANAGEMENT		
E. AS SHOWN	F. AS SHOWN	G. AS SHOWN
H. MUNICIPAL WATER SUPPLY	I. LOAM	J. AS SHOWN
K. ALL SERVICES AS REQUIRED	L. AS SHOWN	

**Area Schedule 30T-16103**

Description	STAGE 1			STAGE 2		
	Lots/Bkls	Units	Area (ha)	Lots/Bkls	Units	Area (ha)
Residential	1-17	26-34	1.094	1-32	70-102	3.293
Multiple Residential	18,19	32-40	0.476			
Multiple Residential/Mixed Use						
School/Residential				33	4	0.096
Parkette				34		0.059
Open Space				35		1.199
Storm Water Management	20		3.183			
Walkway				36,37		0.032
Walkway/Service Corridor	21		0.025			
Future Development						
0.3m Reserve	22-28		0.007			
Roads			1.117			1.106
<b>Total</b>	<b>28</b>	<b>58-74</b>	<b>5.902</b>	<b>37</b>	<b>74-106</b>	<b>5.785</b>

Description	STAGE 3			STAGE 4		
	Lots/Bkls	Units	Area (ha)	Lots/Bkls	Units	Area (ha)
Residential	1-10	35-45	1.587	1,2	2	0.054
Multiple Residential				3	54	1.359
Multiple Residential/Mixed Use						
School/Residential						
Park						
Open Space						
Storm Water Management						
Walkway	11		0.015			
Walkway/Service Corridor	12		0.016			
Future Development				4	2-3	0.081
0.3m Reserve	13,14		0.002	5		0.001
Roads			0.496			0.162
<b>Total</b>	<b>14</b>	<b>35-45</b>	<b>2.116</b>	<b>5</b>	<b>58-59</b>	<b>1.657</b>

Description	STAGE 5			TOTAL		
	Lots/Bkls	Units	Area (ha)	Lots/Bkls	Units	Area (ha)
Residential/Consolidation Block (Residential)	1-12	65-90	2.388	72	198-273	8.430
Multiple Residential/Consolidation Block	13	111-149	1.490	4	197-243	3.325
Multiple Residential/Mixed Use Consolidation Block	14	38-51	0.510	1	38-51	0.510
School/Residential				1	4	0.096
Parkette				1		0.059
Open Space	15		5.496	2		6.695
Storm Water Management				1		3.183
Walkway				2		0.032
Walkway/Service Corridor	16		0.030	3		0.071
Future Development				1	2-3	0.081
0.3m Reserve	17-19		0.006	13		0.016
Roads			0.841			3.722
<b>Total</b>	<b>19</b>	<b>214-290</b>	<b>10.761</b>	<b>101</b>	<b>439-574</b>	<b>26.221</b>

\*Unit numbers shown are minimum/maximum. Minimum unit yield is based on either 12m or 13.76m wide lots and maximum unit yield is based on an average 9m wide lots. For Multiple Residential blocks - Townhouses, 40 units/ha was assumed and for Multiple Residential Blocks - Apartments, 75-100 units/ha was assumed.

**PLANNING URBAN DESIGN & LANDSCAPE ARCHITECTURE**  
**MHBC**  
 200-540 KINGMAN'S CENTRE DR., KITCHENER, ON, N0B 3V0 | P: 519.576.3630 F: 519.576.0121 | WWW.MHBCPLAN.COM

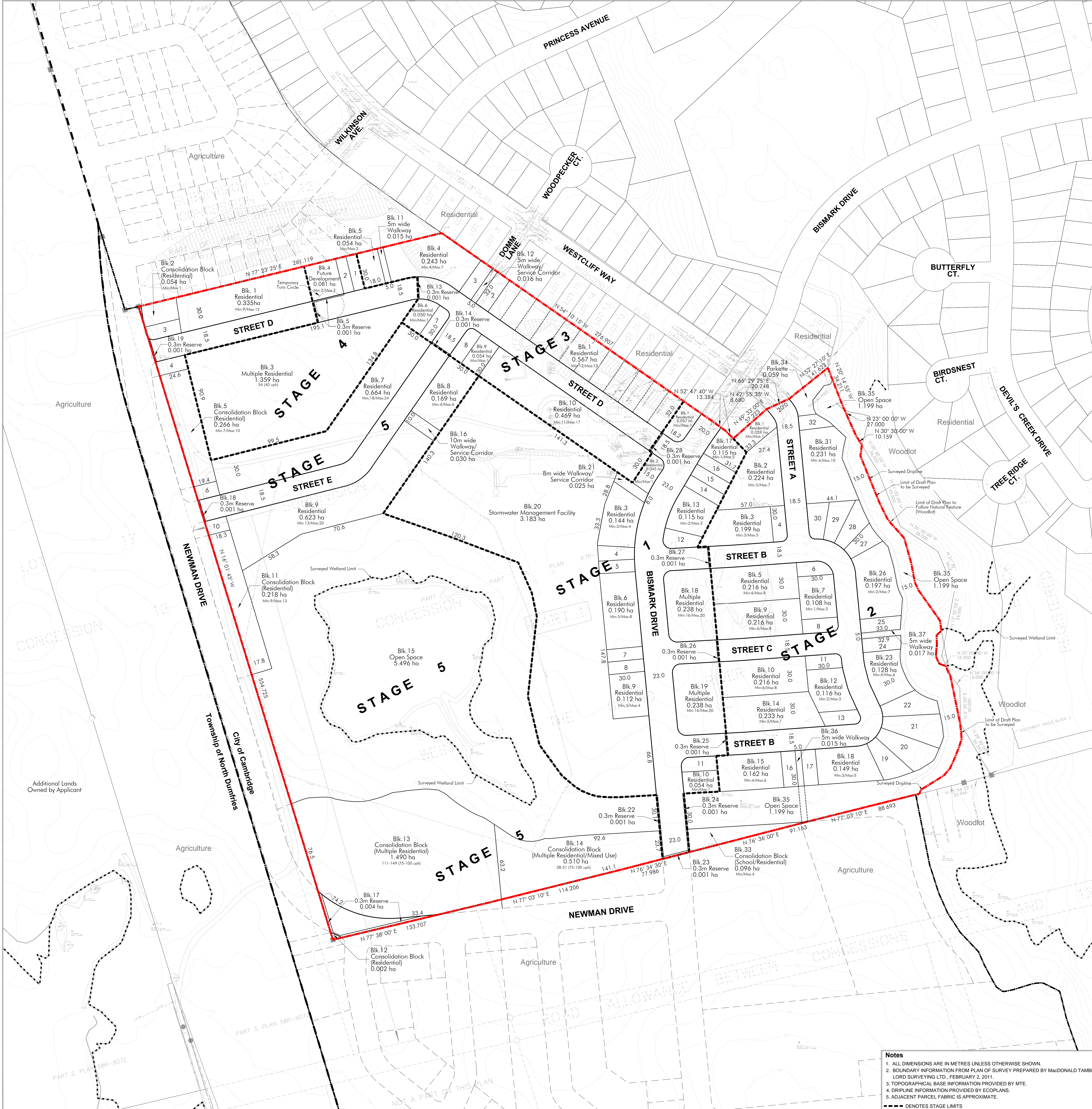
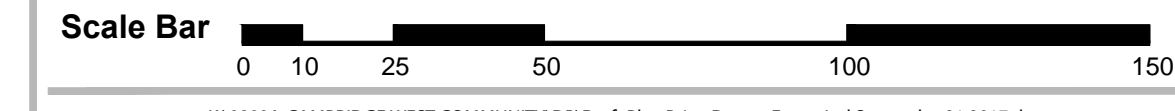
**Approval Stamp**

Date	September 21, 2017
File No.	0800A
Plan Scale	1:1,250 (30x30)
Drawn By	D.G.S.
Checked By	P.B./D.C.

**Project** Cambridge West **Other**

**Applicant**  
 Brian Domm Farms Ltd.  
 1359 Dickie Settlement Road  
 Cambridge, ON. N3H 4R8  
 P: 519.623.5086 F: 519.623.8547

**File Name** DRAFT PLAN **Dwg No.** 1 of 1



**Notes**

- ALL DIMENSIONS ARE IN METRES UNLESS OTHERWISE SHOWN.
- BOUNDARY INFORMATION FROM PLAN OF SURVEY PREPARED BY MACDONALD TAMBLYN LORD SURVEYING LTD., FEBRUARY 2, 2011.
- TOPOGRAPHICAL BASE INFORMATION PROVIDED BY MTE.
- DIPLINE INFORMATION PROVIDED BY ECOPLANS.
- ADJACENT PARCEL FABRIC IS APPROXIMATE.

--- DENOTES STAGE LIMITS