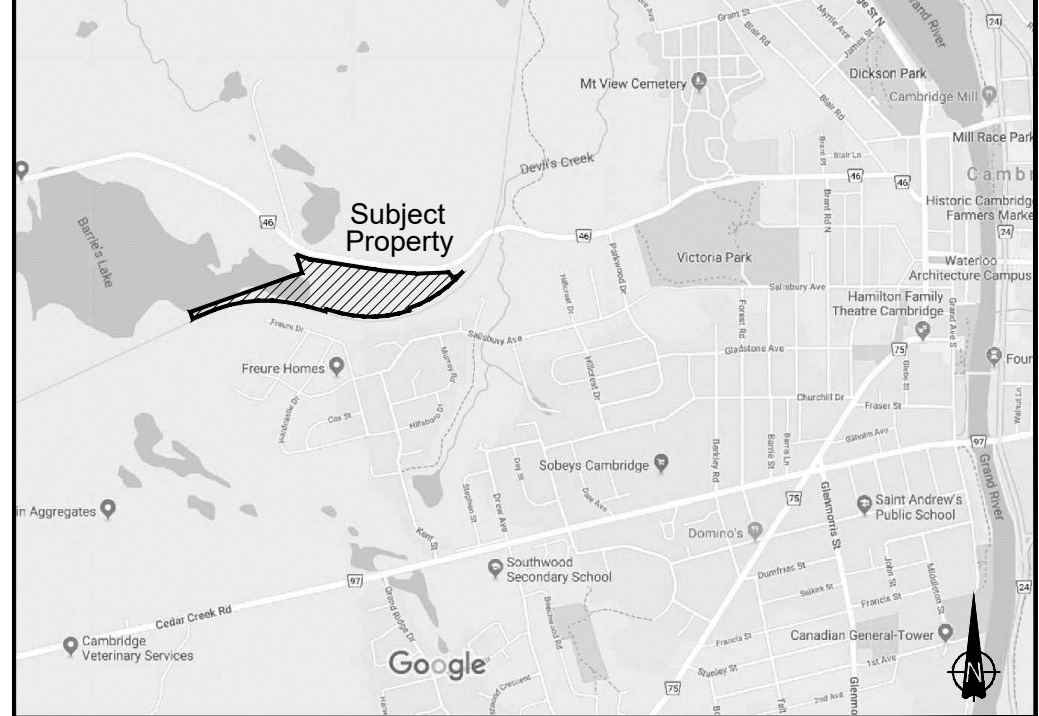
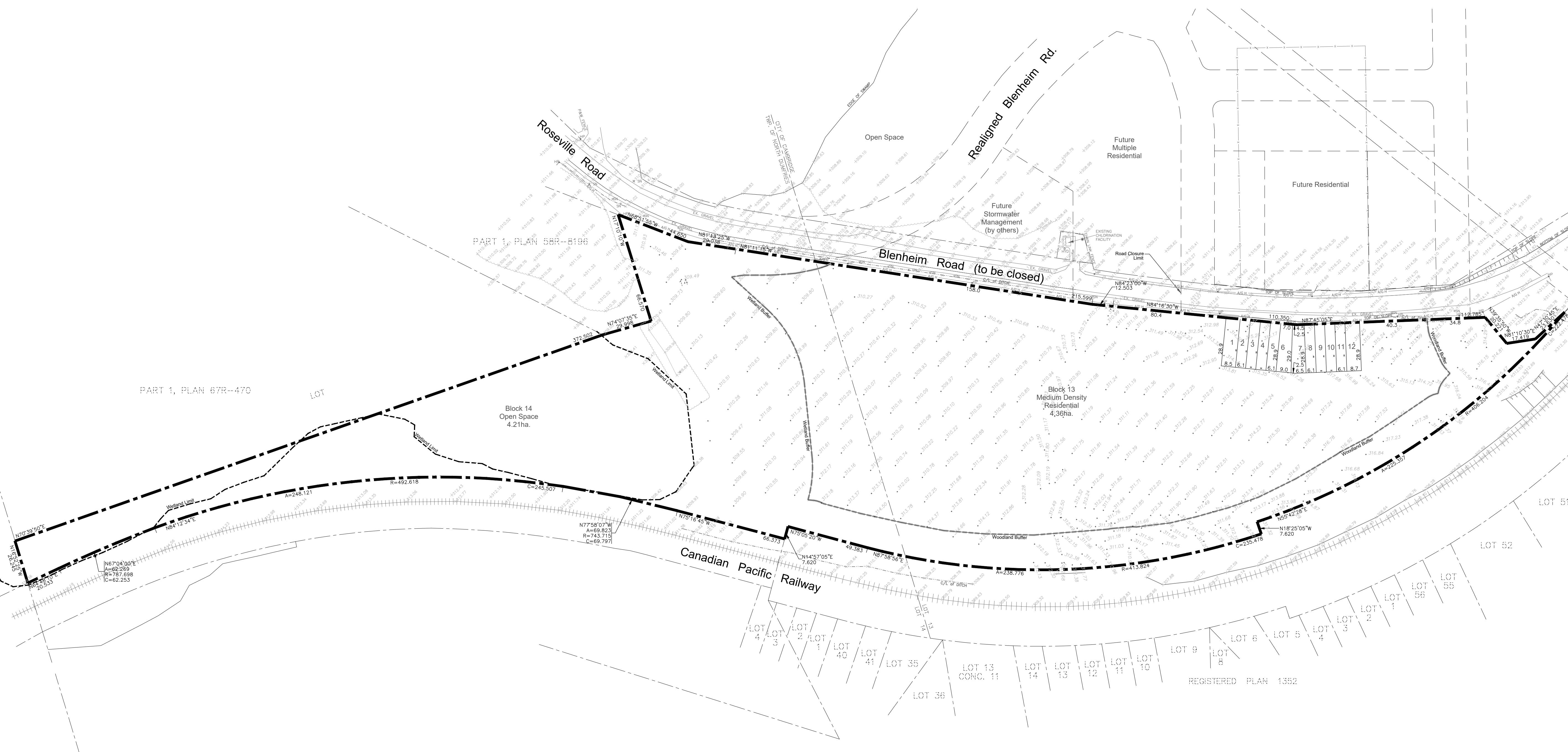


KEY PLAN
N.T.S.



DRAFT PLAN OF SUBDIVISION

Part of Lot 13, Concession 13
(Geographic Township of North Dumfries)
Partly in the City of Cambridge and
Partly in the Township of North Dumfries
Regional Municipality of Waterloo



LAND USE SCHEDULE

DESCRIPTION	LOTS/BLKS.	UNITS	AREA (ha.)
Street Townhouses	1-12	12	0.24
Medium Density Residential	13	approx.152	4.36
Open Space	14		4.21
TOTAL		approx.164	8.81

ADDITIONAL INFORMATION
(UNDER SECTION 51(17) OF THE PLANNING ACT)
INFORMATION REQUIRED BY CLAUSES a,b,c,d,e,f,g,j and I ARE AS SHOWN ON THE DRAFT PLAN.
h) Municipal water supply
i) Stony loam till
k) All sanitary and storm sewers as required

OWNER'S CERTIFICATE
I AUTHORIZE THE GSP GROUP INC. TO PREPARE AND SUBMIT THIS DRAFT PLAN OF SUBDIVISION TO THE CITY OF CAMBRIDGE.

Harold Frouse OWNER *June 25, 2019* DATE

SURVEYOR'S CERTIFICATE
I CERTIFY THAT THE BOUNDARIES OF THE LAND TO BE SUBDIVIDED AND THEIR RELATIONSHIP TO THE ADJACENT LANDS ARE CORRECTLY SHOWN.

Ray Sibthorp RAY SIBTHROP, O.L.S. *June 25, 2019* DATE
MacDonald Tamblin Lord Surveying



REVISIONS