

PLAN OF SURVEY OF
PART OF LOTS 28, AND 29
BEASLEY'S BROKEN FRONT CONCESSION
(GEOGRAPHIC TOWNSHIP OF WATERLOO)
CITY OF CAMBRIDGE, REGIONAL MUNICIPALITY OF WATERLOO
SCALE 1:1250

MacDONALD TAMBLYN LORD SURVEYING LTD.

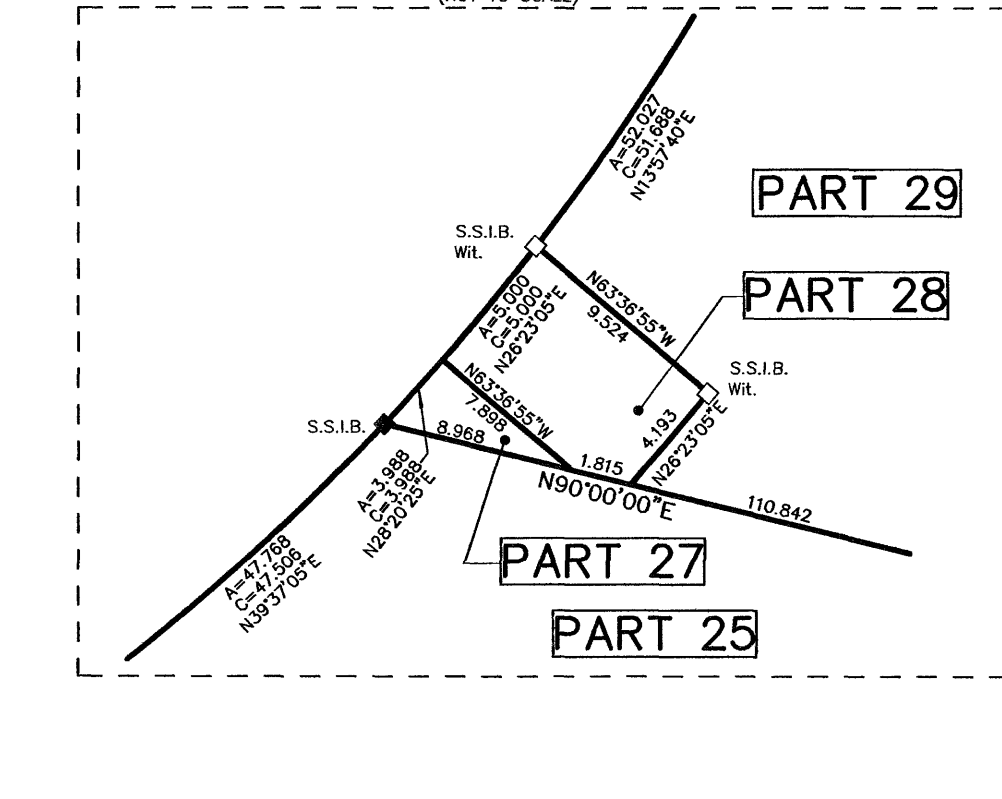
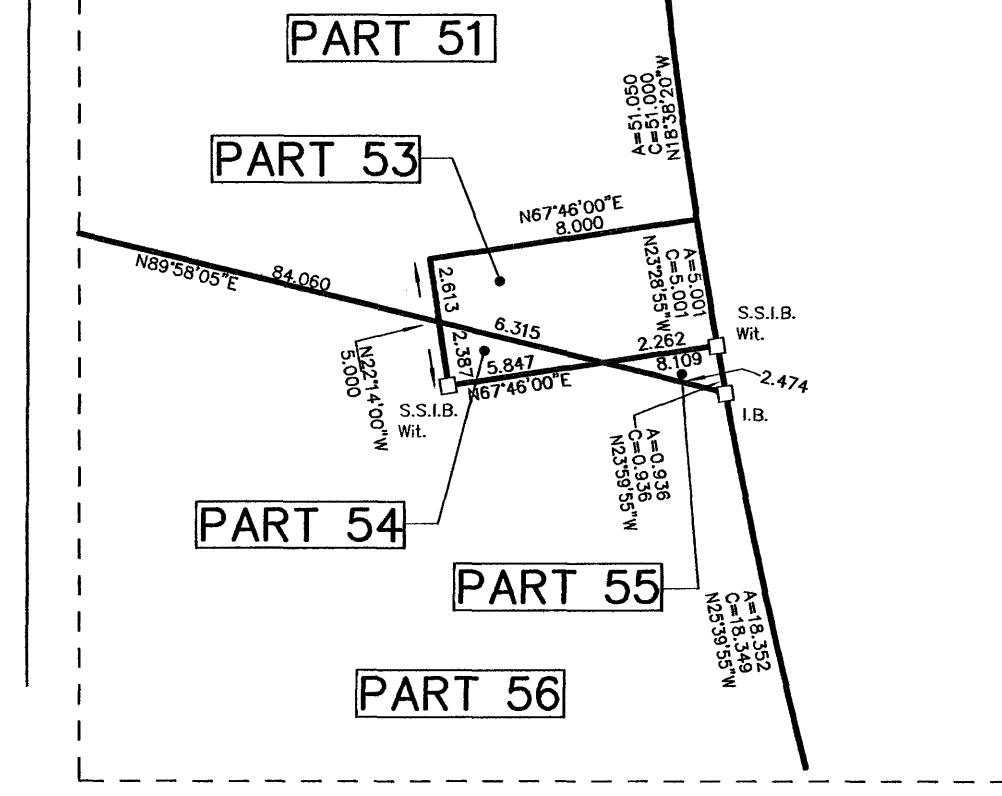
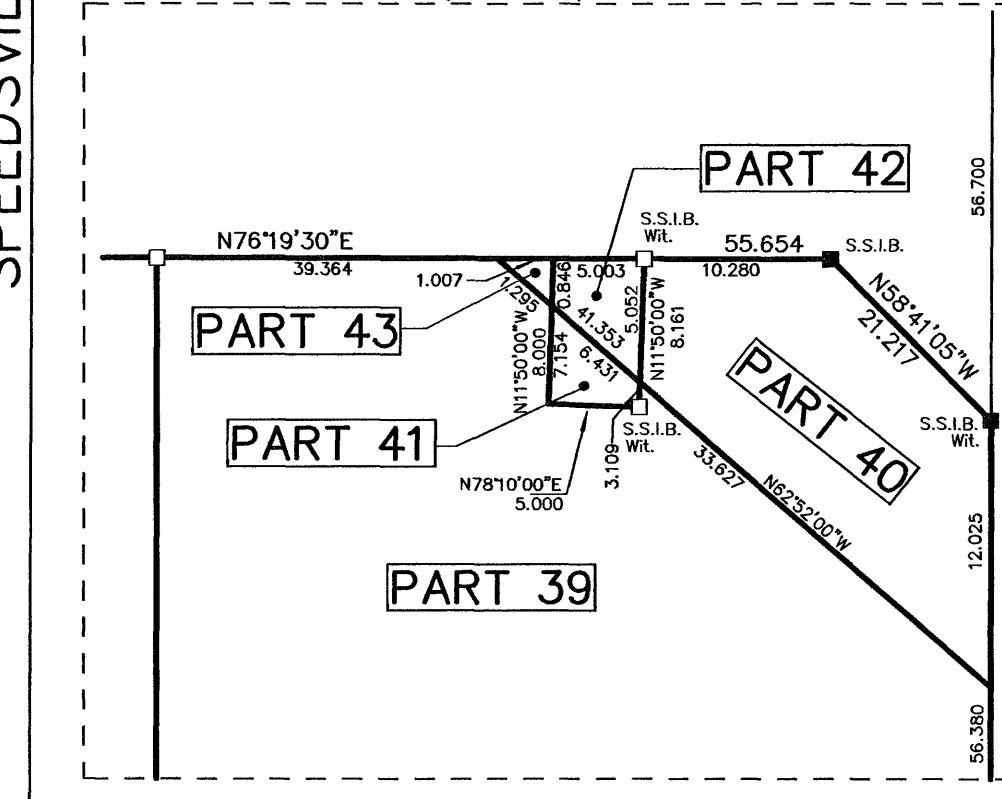
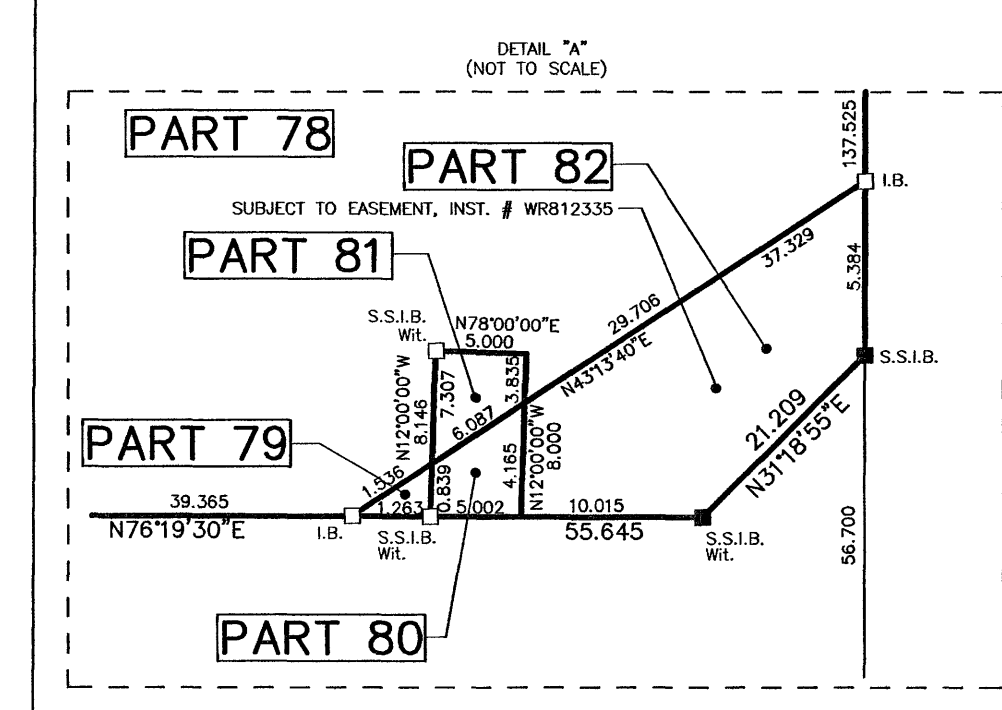
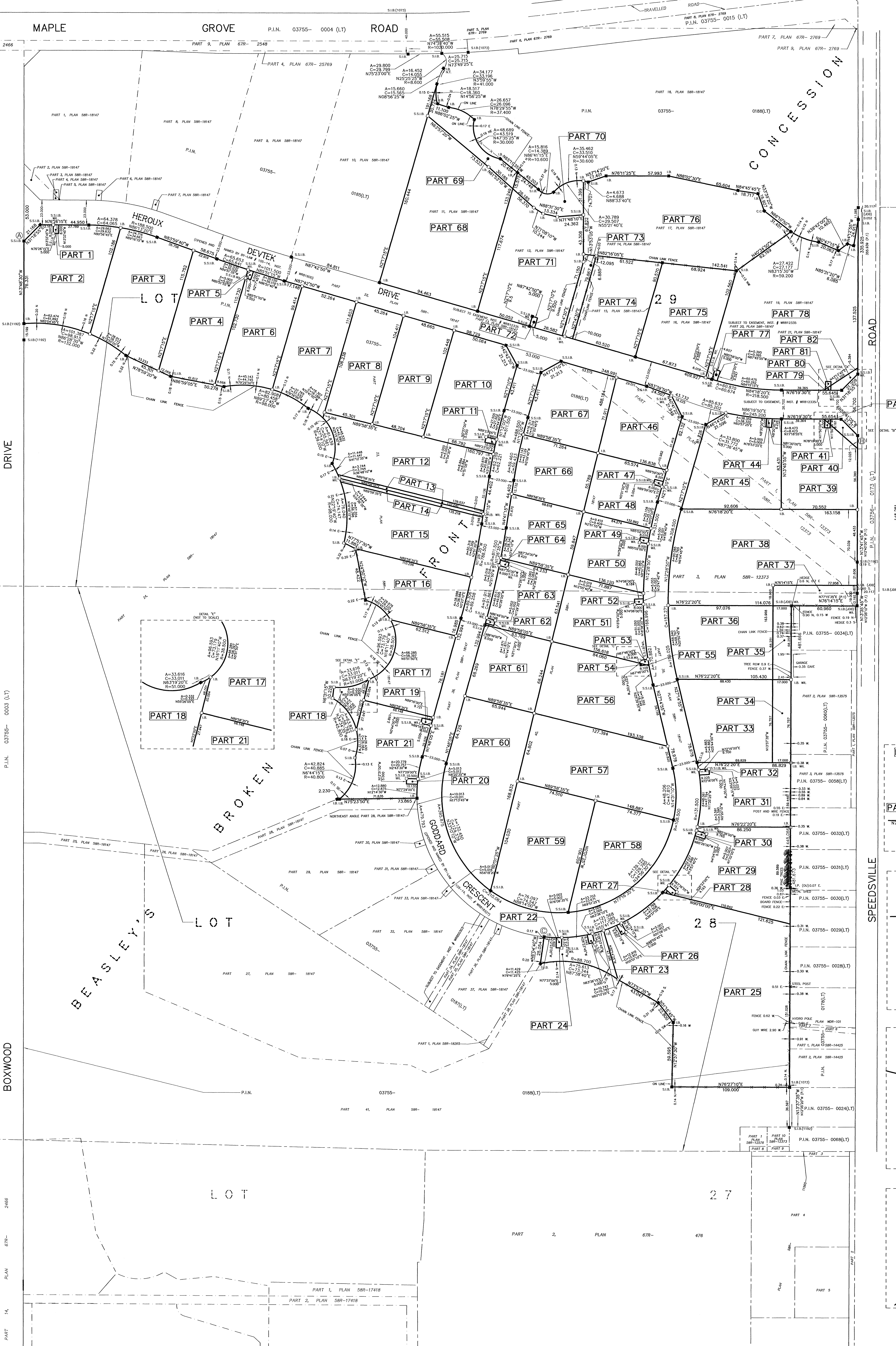
PLAN 58R-18484

RECEIVED AND DEPOSITED
Feb. 10/15
J. Cameron
REPRESENTATIVE FOR
LAND REGISTRY FOR THE LAND TITLES
DIVISION OF WATERLOO (No. 58)
I REQUIRE THIS PLAN TO BE DEPOSITED
UNDER THE LAND TITLES ACT
JANUARY 29, 2015
MacDONALD TAMBLYN LORD SURVEYING LTD.

PART SCHEDULE

PART	LOT	CON.	P.I.N.
1			
2			
3			
4			
5			
6			
7			
8			
9			
10			
11	29		
12			
13			
14			
15			
16	28, 29		
17			
18			
19			
20			
21			
22			
23			
24			
25			
26			
27	28		
28			
29			
30			
31			
32			
33			
34			
35			
36			
37	28, 29		
38			
39			
40			
41			
42			
43			
44			
45			
46			
47			
48			
49			
50	28, 29		
51			
52			
53			
54			
55			
56			
57	28		
58			
59			
60			
61			
62	28, 29		
63			
64			
65			
66			
67			
68			
69			
70			
71			
72	29		
73			
74			
75			
76			
77			
78			
79			
80			
81			
82			

PARTS 1 TO 82 INCLUSIVE COMPRISE
PART OF PLAN 03755-0188(LT)
PARTS 72, 73, 80 AND 82 ARE SUBJECT
TO AN EASEMENT BY INST. # M812335.



INTEGRATION DATA

ALL COORDINATES ARE IN METRES, DERIVED FROM GPS
COORDINATES USING THE CANADIAN DATUM AND ARE
REFERRED TO UTM ZONE 17 (EAST LONGITUDE) NORTH (NAD83).
COORDINATE VALUES ARE TO THREE DECIMALS IN ACCORDANCE
WITH SECTION 14 (2) OF O. REG. 216/70

POINT ID	NORTHING	EASTING
A	480774.764	552109.054
B	480823.100	551488.027
C	480823.000	552008.124

CAUTION: COORDINATE VALUES, IN THEMSELVES, ARE USED TO
RE-ESTABLISH CORNERS OR BOUNDARIES SHOWN ON THIS PLAN.

LEGEND

- DENOTES SURVEY MONUMENT FOUND (THAT UNLESS NOTED OTHERWISE)
- DENOTES SURVEY MONUMENT SET
- S.S.I.B. DENOTES STAKELESS IRON BURN
- I.B. DENOTES IRON BURN
- C.C. DENOTES CEMENT CORNER
- (+)(*) DENOTES MACDONALD-TAMBLYN SURVEYING LTD.
- (O)(*) DENOTES MACDONALD-TAMBLYN SURVEYING LTD.
- (I)(*) DENOTES IRON S. CORNER, I.I.S.
- P.I. DENOTES PLAN 58R-12373

NOTE: SEE PLAN 58R-18417 FOR LOT CORNER TIE

BEARING REFERENCE

BEARINGS ARE UTM GRID, DERIVED FROM SIMULTANEOUS GPS
COORDINATES FROM STATION A TO B, OPEN WIRELESS
USING A BEARING OF 180°10'00", WOULD (EAST) AND ARE
REFERRED TO THE CENTRAL MERIDIAN OF UTM ZONE 17
(EAST LONGITUDE).

METRIC

BEARINGS AND COORDINATES SHOWN ON THIS PLAN ARE IN METRES
AND CAN BE CONVERTED TO FEET BY DIVIDING BY 0.3048.
DISTANCES ARE GIVEN AND CAN BE CONVERTED TO FEET BY
MULTIPLYING THE GIVEN SCALE FACTOR OF 0.3048.

SURVEYOR'S CERTIFICATE

I CERTIFY THAT:

- THIS SURVEY AND PLAN ARE CORRECT AND IN ACCORDANCE WITH THE SURVEY ACT, THE SURVEYORS ACT AND THE LAND TITLES ACT AND THE REGULATIONS MADE UNDER THEM.
- THE SURVEY WAS COMPLETED ON THE 29th DAY OF JANUARY, 2015.

JANUARY 29, 2015
DATE

MacDONALD TAMBLYN LORD SURVEYING LTD.
14-40-005-03
14-40-005-03
14-40-005-03
14-40-005-03

MacDONALD TAMBLYN LORD SURVEYING

A fully registered surveying firm
18 BELMONT DRIVE, UNIT 2, CAMBRIDGE, ONTARIO N1R 7B1
TEL: 647-462-9600 F: 647-462-1498 www.mtlord.com

MacDONALD TAMBLYN LORD SURVEYING
14-40-005-03
14-40-005-03
14-40-005-03
14-40-005-03