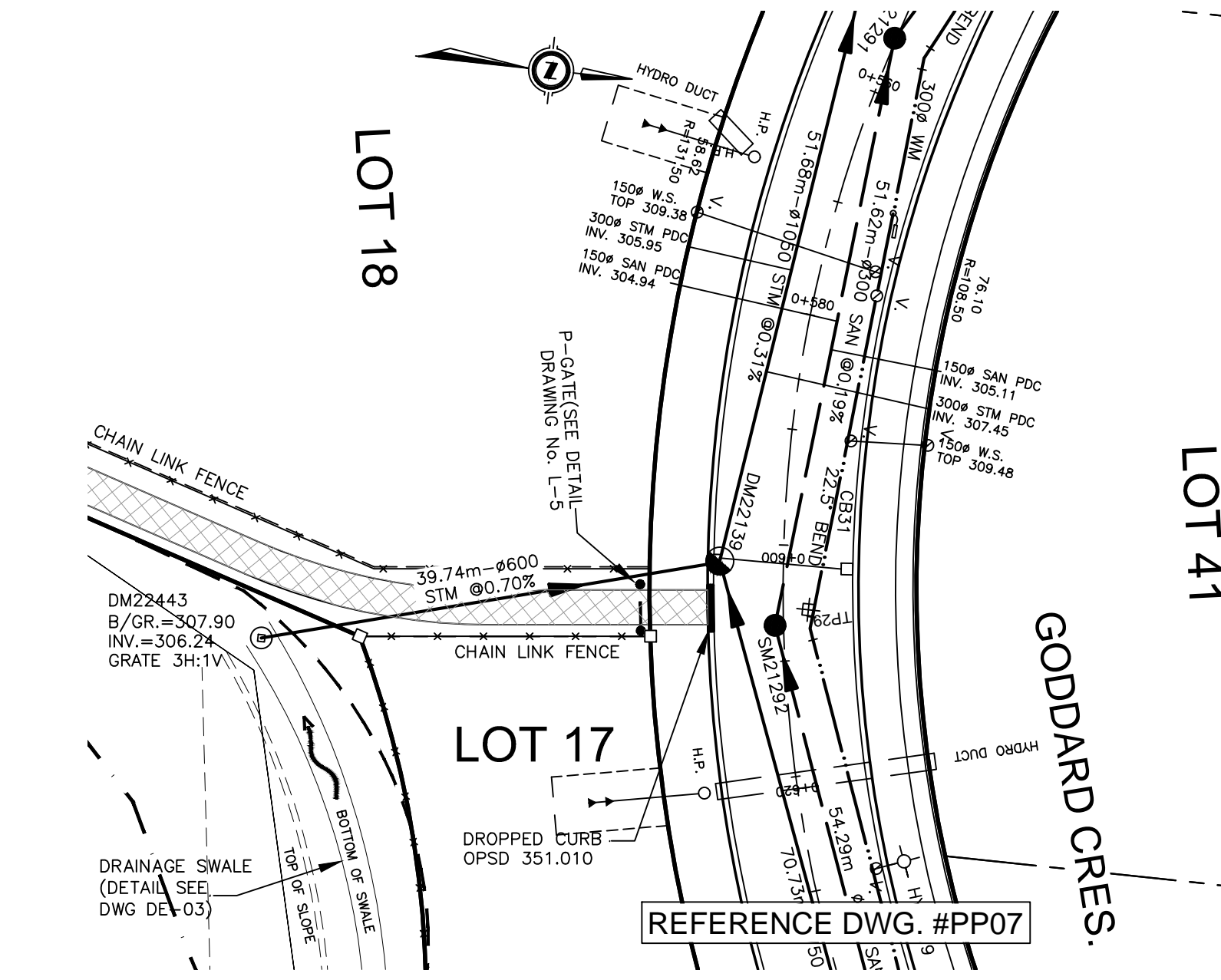
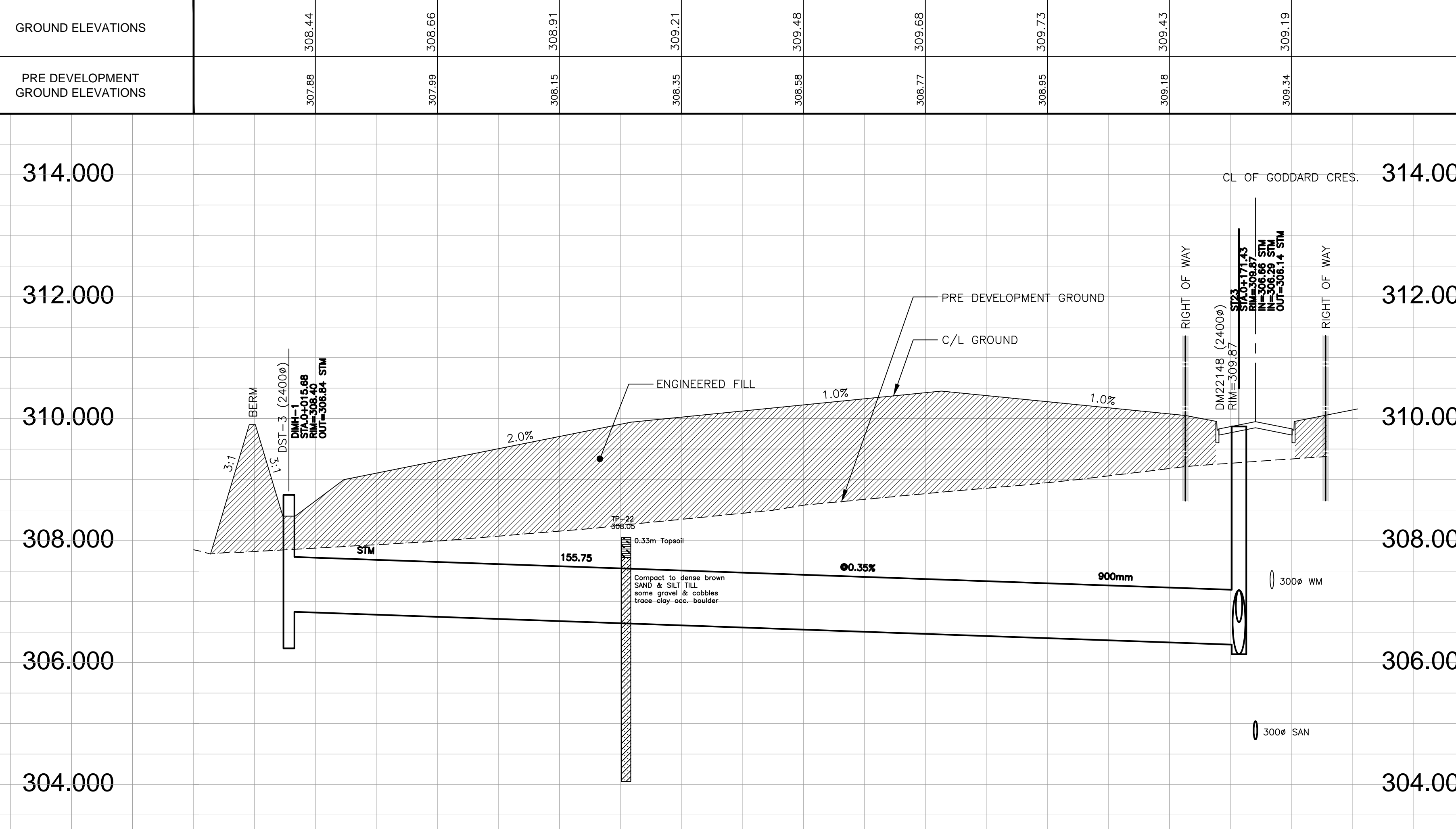


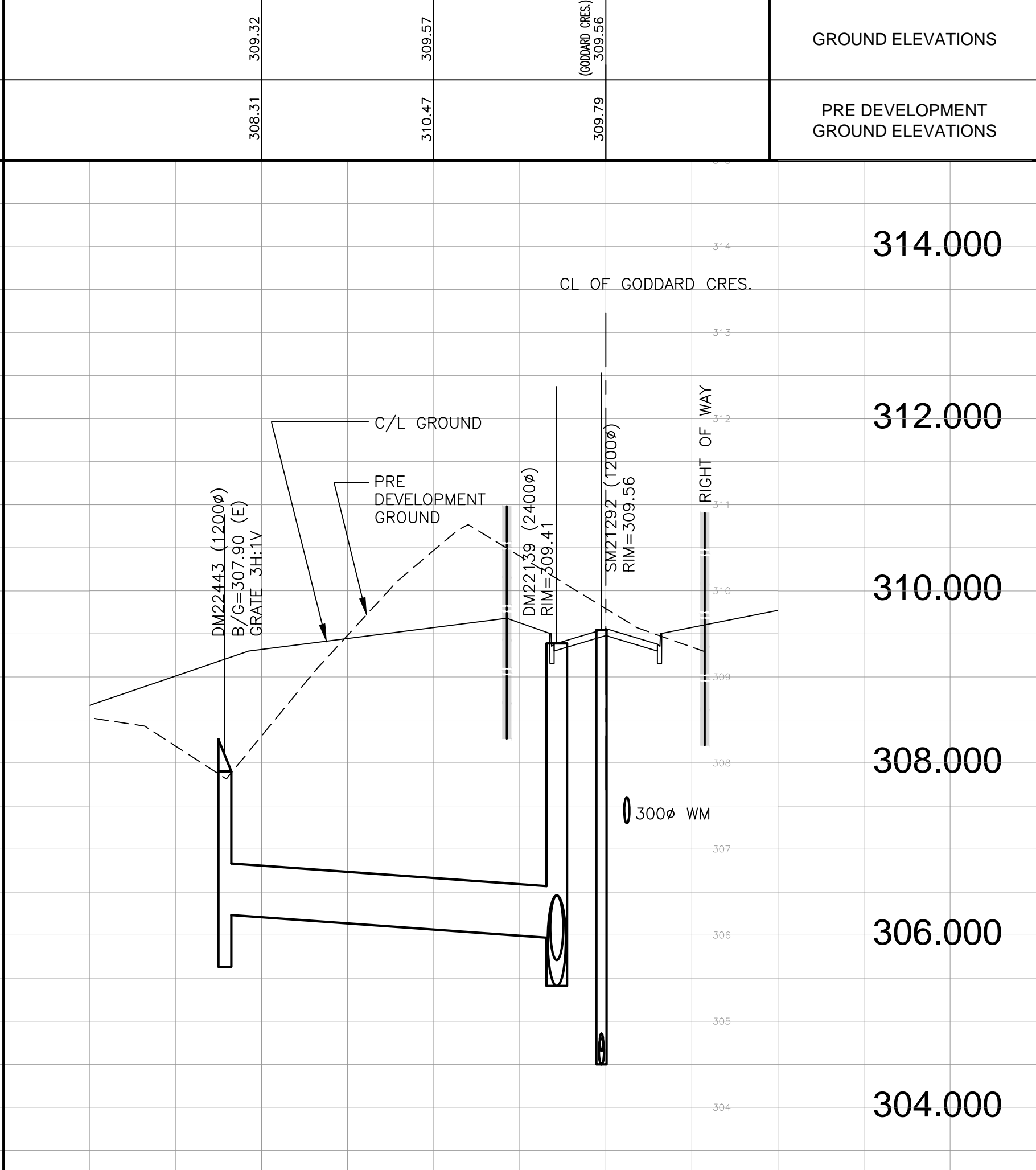
**STORM SEWER EASEMENT. LOT 24/25**



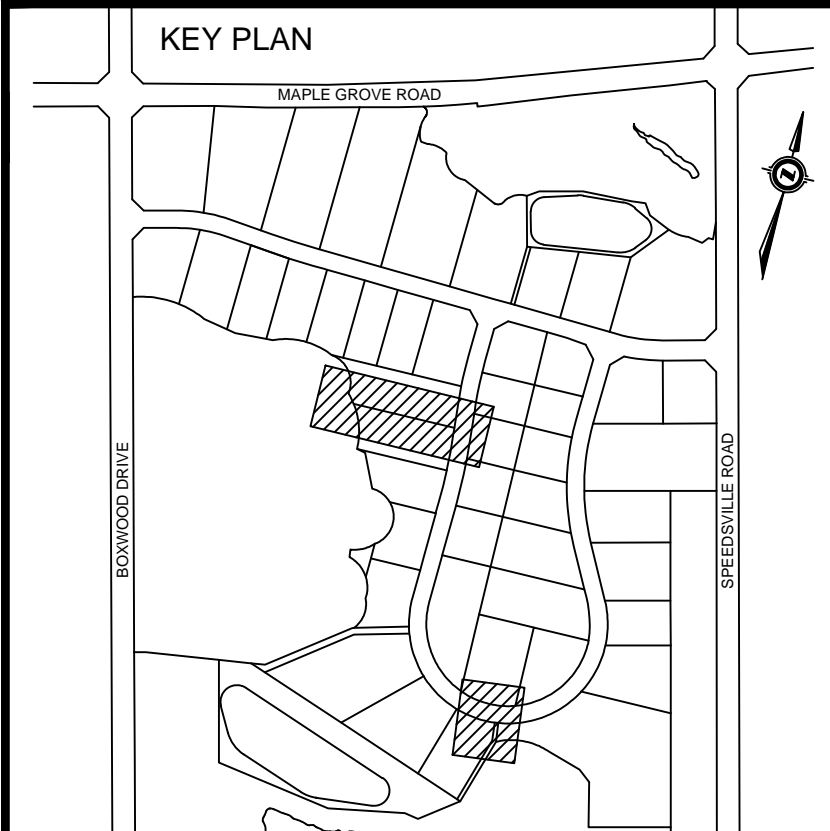
**STORM SEWER ESMT. LOT 17/18**



TOP OF WATERMAIN																	
STORM INVERTS		306.84E900				155.75m OF 900mmØ 65-D CONC. STM SEWER @ 0.35% GRADE											
SANITARY INVERTS																	
CHAINAGE	0+000	0+020	0+040	0+060	0+080	0+100	0+120	0+140	0+160	0+171.43 0+174.14 0+174.14 CL. GODDARD CRES.	0+180						



TOP OF WATERMAIN																	
STORM INVERTS		306.24N600				39.74m OF 600mmØ 65-D CONC. STM SEWER @ 0.70% GRADE											
SANITARY INVERTS																	
CHAINAGE	0+040	0+060	0+080														



**BENCHMARKS**  
 RMW317: ELVE. 306.269  
 TABLE IN FOUNDATION OF WHITE BRICK PORTION OF FORMER MAPLE GROVE SCHOOL ON MAPLE GROVE ROAD AT SPEEDVILLE ROAD. TABLE IS IN SOUTH SIDE OF BUILDING 0.10M WEST OF SOUTH EAST CORNER OF BUILDING AND 0.20 M ABOVE GRADE.  
 RMW319: ELVE. 310.607  
 TABLE IN SOUTH FACE OF CONCRETE BASE FOR SIGNAL CONTROL BOX AT NORTH EAST CORNER OF MAPLE GROVE ROAD AND FOUNTAIN STREET. TABLE IS 0.10 M EAST OF SOUTH WEST CORNER OF BASE.  
 RMW320: ELVE. 306.619  
 TABLE IN WEST END OF RETAINING WALL IN ENTRANCE WAY TO WATERLOO REGIONAL POLICE HEADQUARTERS AND REGIONAL OPERATIONS CENTRE. RETAINING WALL IS LOCATED WHERE DRIVEWAY SPLITS TO RESPECTIVE BUILDINGS. TABLE IS LOCATED 0.3 M ABOVE GRADE.  
 RMW332: ELVE. 309.787  
 ELEVATION IS FOR A BRONZE TABLE SET IN A RED BRICK BUILDING (REGIONAL AMBULANCE BUILDING) @ THE SOUTHEAST CORNER OF CHERRY BLOSSOM DRIVE AND FOUNTAIN STREET.  
 THE TABLE IS SET IN WEST WALL (ON BRICK) 0.15 M. NORTH OF THE SOUTH END OF BUILDING AND 0.15 M. ABOVE GRADE.

DRAWINGS TO BE READ IN CONJUNCTION WITH GEOTECHNICAL INVESTIGATION PREPARED BY CHUNG & VANDER DOELEN ENGINEERING LTD., FILE NO. 07-07-K20 SUB, DATED FEBRUARY 2, 2011.  
 THE PARCEL INFORMATION SHOWN ON THIS MAP IS COMPILED FROM VARIOUS SOURCES & IS NOT WARRANTED AS TO ITS ACCURACY BY THE MUNICIPALITY. USERS ARE REMINDED THAT LOT SIZES & LEGAL DESCRIPTIONS MUST BE CONFIRMED AT THE LAND REGISTRY OFFICE. THIS IS NOT A LEGAL DOCUMENT.  
 THE LOCATIONS OF EXISTING UNDERGROUND UTILITIES ARE SHOWN IN AN APPROXIMATE MANNER ONLY AND HAVE NOT BEEN INDEPENDENTLY VERIFIED BY THE OWNER OR THE CITY'S REPRESENTATIVE. THE CONTRACTOR SHALL DETERMINE THE EXACT LOCATION OF ALL EXISTING UTILITIES PRIOR TO CONSTRUCTION AND IS RESPONSIBLE FOR ANY OR ALL DAMAGES WHICH MIGHT OCCUR BY THE CONTRACTOR'S FAILURE TO EXACTLY LOCATE AND PRESERVE ANY AND ALL UNDERGROUND UTILITIES.

AS CONSTRUCTED		R.P.	02/19/14
NO.	REVISION	BY	DATE
	NORTH ARROW (AS SHOWN ON PLAN)		
SURVEY DATA:		DRAWING INFORMATION:	
SURVEY BY:	R.N.	DRAWN BY:	R.P./J.U.
DATE:	DECEMBER 2010	DATE:	JANUARY 2012
FIELD BOOK:		DESIGN BY:	R.A.
REQUISITION NO.:		DATE:	JANUARY 2012
CHECKED BY:		CHECKED BY:	K.H.
DATE:		DATE:	JANUARY 2012



**BOXWOOD SUBDIVISION**  
 STORM SEWER ESMT. LOT 24/25,  
 STORM SEWER ESMT. LOT 17/18

SCALE:	DRAWING NO:
HORIZONTAL: 1:500	<b>PP-10</b>
VERTICAL: 1:50	