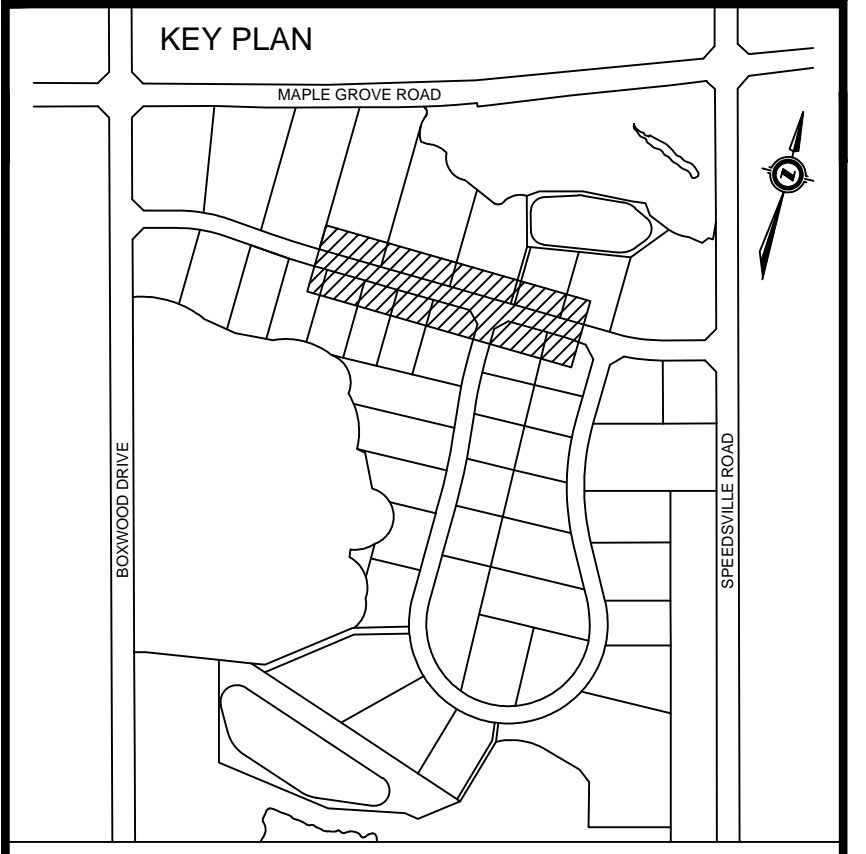


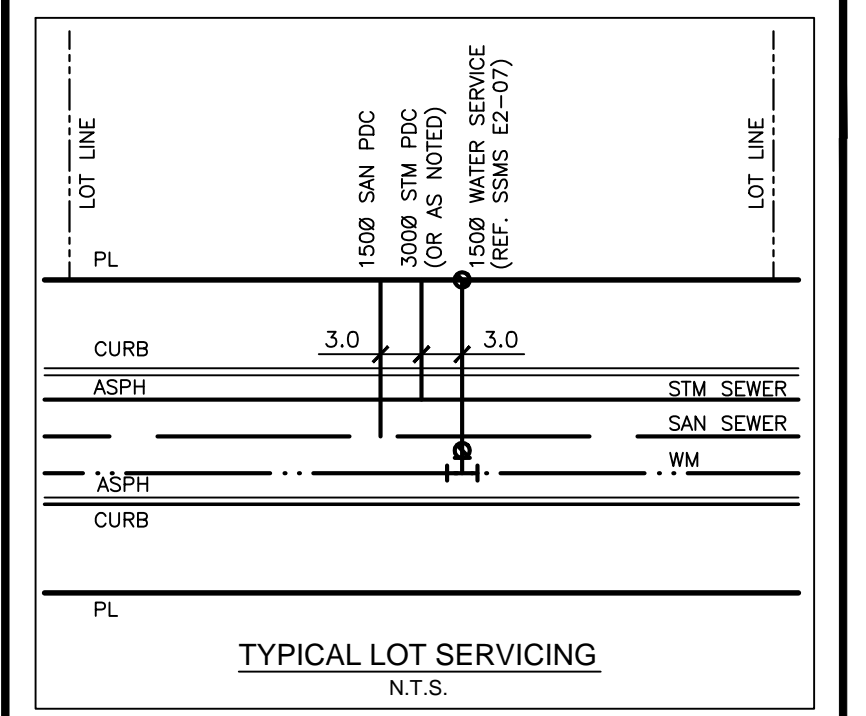
HEROUX DEVTEK DR.

REFERENCE DWG. #PP16

REFERENCE DWG. #PP05



BENCHMARKS
 BMK317: ELVE. 306.269
 TABLET IN FOUNDATION OF WHITE BRICK PORTION OF FORMER MAPLE GROVE SCHOOL ON MAPLE GROVE ROAD AT SPEEDVILLE ROAD. TABLET IS IN SOUTH SIDE OF BUILDING 0.10M WEST OF SOUTH EAST CORNER OF BUILDING AND 0.20 M ABOVE GRADE.
 BMK319: ELVE. 310.607
 TABLET IN SOUTH FACE OF CONCRETE BASE FOR SIGNAL CONTROL BOX AT NORTH EAST CORNER OF MAPLE GROVE ROAD AND FOUNTAIN STREET. TABLET IS 0.10 M EAST OF SOUTH WEST CORNER OF BASE.
 BMK320: ELVE. 306.619
 TABLET IN WEST END OF RETAINING WALL IN ENTRANCE WAY TO WATERLOO REGIONAL POLICE HEADQUARTERS AND REGIONAL OPERATIONS CENTRE. RETAINING WALL IS LOCATED WHERE DRIVEWAY SPLITS TO RESPECTIVE BUILDINGS. TABLET IS LOCATED 0.3 M ABOVE GRADE.
 BMK322: ELVE. 309.787
 ELEVATION IS FOR A BRONZE TABLET SET IN A RED BRICK BUILDING (REGIONAL AMBULANCE BUILDING) @ THE SOUTHEAST CORNER OF CHERRY BLOSSOM DRIVE AND FOUNTAIN STREET.
 THE TABLET IS SET IN WEST WALL (ON BRICK) 0.15 M. NORTH OF THE SOUTH END OF BUILDING AND 0.15 M. ABOVE GRADE.



DRAWINGS TO BE READ IN CONJUNCTION WITH GEOTECHNICAL INVESTIGATION PREPARED BY CHUNG & VANDER DOELEN ENGINEERING LTD., FILE NO. 07-07-K20 SUB. DATED FEBRUARY 2, 2011.

THE PARCEL INFORMATION SHOWN ON THIS MAP IS COMPILED FROM VARIOUS SOURCES & IS NOT WARRANTED AS TO ITS ACCURACY BY THE MUNICIPALITY. USERS ARE REMINDED THAT LOT SIZES & LEGAL DESCRIPTIONS MUST BE CONFIRMED AT THE LAND REGISTRY OFFICE. THIS IS NOT A LEGAL DOCUMENT.
 THE LOCATIONS OF EXISTING UNDERGROUND UTILITIES ARE SHOWN IN AN APPROXIMATE WAY ONLY AND HAVE NOT BEEN INDEPENDENTLY VERIFIED BY THE OWNER OR THE CITY'S REPRESENTATIVE. THE CONTRACTOR SHALL DETERMINE THE EXACT LOCATION OF ALL EXISTING UTILITIES PRIOR TO CONSTRUCTION AND IS RESPONSIBLE FOR ANY OR ALL DAMAGES WHICH MIGHT OCCUR BY THE CONTRACTOR'S FAILURE TO EXACTLY LOCATE AND PRESERVE ANY AND ALL UNDERGROUND UTILITIES.

NO.	REVISION	BY	DATE
	AS CONSTRUCTED	R.P.	02/19/14

STAMP

SURVEY DATA:
 SURVEY BY: R.N.
 DATE: DECEMBER 2010
 FIELD BOOK:
 REQUISITION NO:
 CHECKED BY:
 DATE:

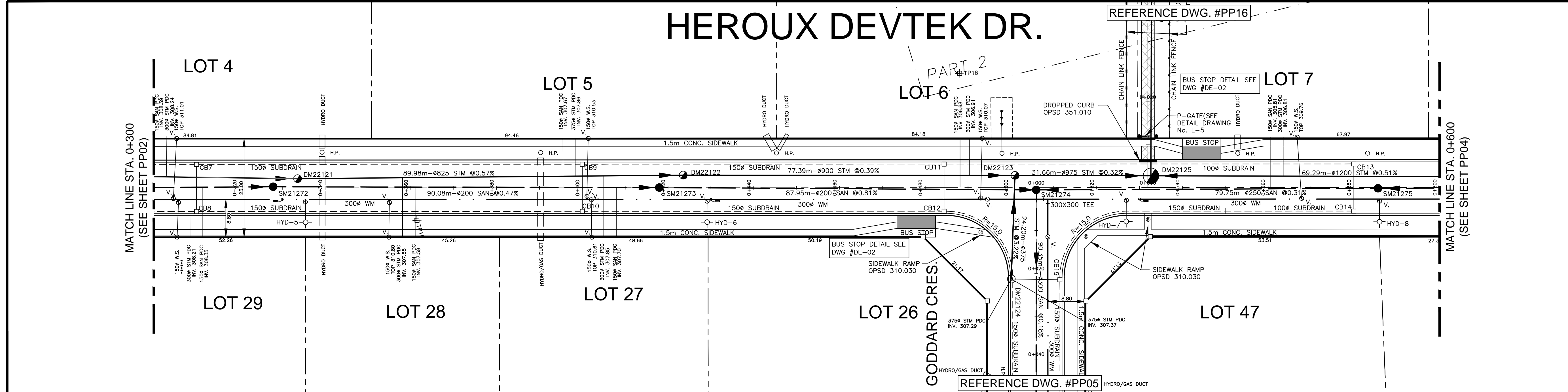
DRAWING INFORMATION:
 DRAWN BY: R.P./J.U.
 DATE: JANUARY 2012
 DESIGN BY: R.A.
 DATE: JANUARY 2012
 CHECKED BY: K.H.
 DATE: JANUARY 2012



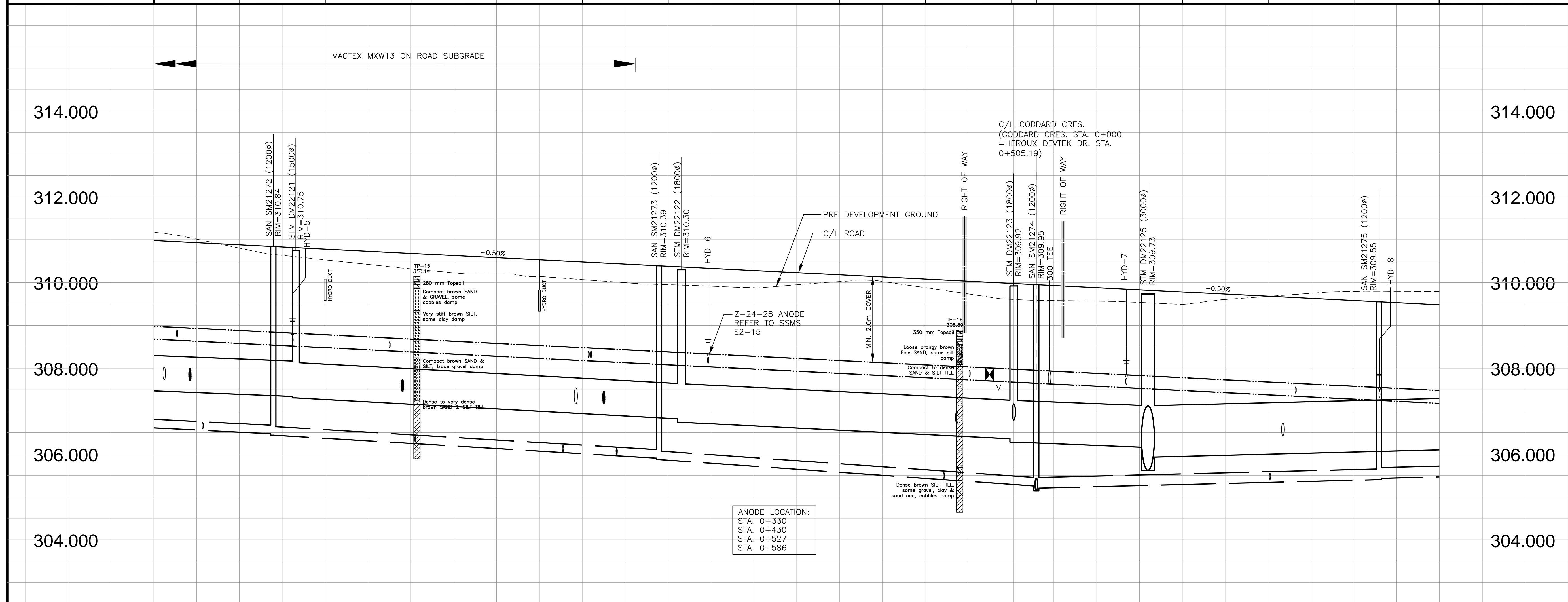
Delcan 675 QUEEN STREET S. SUITE 201 KITCHENER, ONTARIO, CANADA N2M 2A1 TEL: (519) 744-4509 FAX: (519) 744-2822 WWW.DELCAN.COM

BOXWOOD SUBDIVISION
 HEROUX DEVTEK DR.
 STA. 0+300 TO STA. 0+600

SCALE: HORIZONTAL: 1:500 VERTICAL: 1:50
 DRAWING NO: **PP-03**



ROAD CENTERLINE ELEVATIONS	PRE DEVELOPMENT GROUND ELEVATIONS	ROAD CENTERLINE ELEVATIONS	PRE DEVELOPMENT GROUND ELEVATIONS
310.980	311.17	309.880	309.57
310.880	310.80	309.780	309.49
310.780	310.53	309.680	309.39
310.680	310.32	309.580	309.29
310.580	310.20	309.480	309.19
310.480	310.07	309.380	309.09
310.380	309.95	309.280	308.99
310.280	309.83	309.180	308.89
310.180	309.71	309.080	308.79
310.080	309.59	308.980	308.69
310.980	309.47	308.880	308.59
310.880	309.35	308.780	308.49
310.780	309.23	308.680	308.39
310.680	309.11	308.580	308.29
310.580	308.99	308.480	308.19
310.480	308.87	308.380	308.09
310.380	308.75	308.280	307.99
310.280	308.63	308.180	307.89
310.180	308.51	308.080	307.79
310.080	308.39	307.980	307.69
310.980	308.27	307.880	307.59
310.880	308.15	307.780	307.49
310.780	308.03	307.680	307.39
310.680	307.91	307.580	307.29
310.580	307.79	307.480	307.19
310.480	307.67	307.380	307.09
310.380	307.55	307.280	306.99
310.280	307.43	307.180	306.89
310.180	307.31	307.080	306.79
310.080	307.19	306.980	306.69
310.980	307.07	306.880	306.59
310.880	306.95	306.780	306.49
310.780	306.83	306.680	306.39
310.680	306.71	306.580	306.29
310.580	306.59	306.480	306.19
310.480	306.47	306.380	306.09
310.380	306.35	306.280	305.99
310.280	306.23	306.180	305.89
310.180	306.11	306.080	305.79
310.080	305.99	305.980	305.69
310.980	305.87	305.880	305.59
310.880	305.75	305.780	305.49
310.780	305.63	305.680	305.39
310.680	305.51	305.580	305.29
310.580	305.39	305.480	305.19
310.480	305.27	305.380	305.09
310.380	305.15	305.280	304.99
310.280	305.03	305.180	304.89
310.180	304.91	305.080	304.79
310.080	304.79	304.980	304.69



ANODE LOCATION:
 STA. 0+330
 STA. 0+430
 STA. 0+527
 STA. 0+586

TOP OF WATERMAIN	STORM INVERTS	SANITARY INVERTS	CHAINAGE	TOP OF WATERMAIN	STORM INVERTS	SANITARY INVERTS	CHAINAGE
319.55m OF 300mm DR-18 PVC WATERMAIN @ 0.50% GRADE	113.88m OF 825mm 65-D CONC. STM SEWER @ 0.39% GRADE	89.17m OF 200mm SDR-35 PVC SAN SEWER @ 0.61% GRADE	0+300	121.0m OF 300mm DR-18 PVC WATERMAIN @ 0.50% GRADE	69.29m OF 1200mm 65-D CONC. STM SEWER @ 0.51% GRADE	79.75m OF 250mm SDR-35 PVC SAN SEWER @ 0.31% GRADE	0+600
	89.98m OF 825mm 65-D CONC. STM SEWER @ 0.57% GRADE	90.08m OF 200mm SDR-35 PVC SAN SEWER @ 0.47% GRADE	0+320				
	77.39m OF 900mm 65-D CONC. STM SEWER @ 0.39% GRADE	87.95m OF 200mm SDR-35 PVC SAN SEWER @ 0.81% GRADE	0+340				
	31.66m OF 975mm 65-D CONC. STM SEWER @ 0.32% GRADE		0+360				
			0+380				
			0+400				
			0+420				
			0+440				
			0+460				
			0+480				
			0+500				
			0+520				
			0+540				
			0+560				
			0+580				