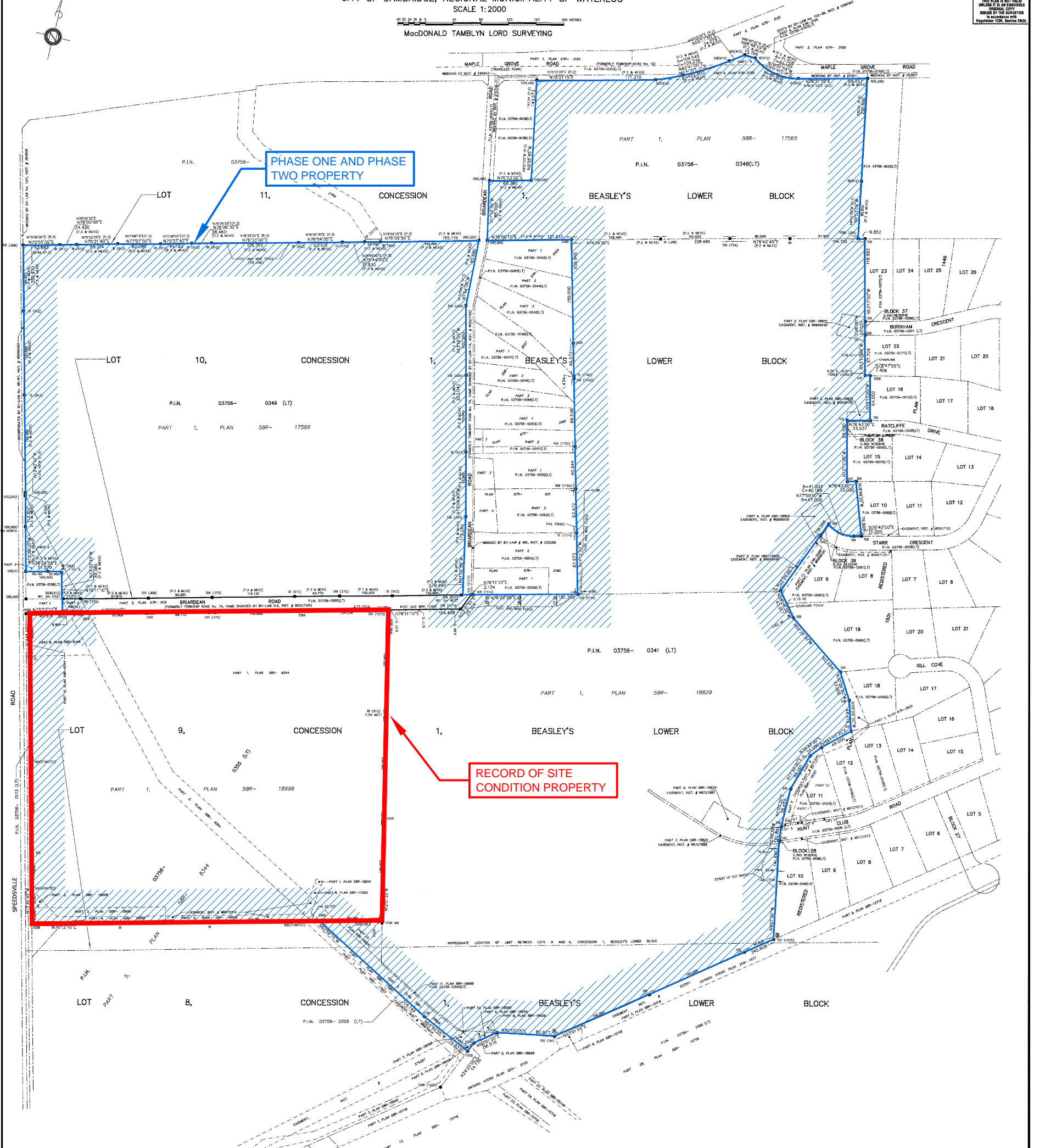


PLAN OF SURVEY OF  
PART OF LOTS 8, 9, 10 AND 11, CONCESSION 1, BEASLEY'S LOWER BLOCK  
(GEOGRAPHIC TOWNSHIP OF WATERLOO)  
CITY OF CAMBRIDGE, REGIONAL MUNICIPALITY OF WATERLOO  
SCALE 1:2000  
MacDONALD TAMBLYN LORD SURVEYING

ASSOCIATION OF ONTARIO  
LAND SURVEYORS  
PLAN SURVEYORS FORM  
1984/14  
THIS PLAN IS NOT VALID  
UNLESS IT IS APPROVED  
IN ACCORDANCE WITH  
REGULATION 219, SECTION 2(3)



**INTEGRATION DATA**  
ALL COORDINATES ARE IN METRES, DERIVED FROM GPS OBSERVATIONS, USING THE CAN-NET NETWORK AND ARE REFERRED TO UTM ZONE 17 (87° WEST LONGITUDE) NAD83 (CSRS). DISTANCES ARE GROUND AND CAN BE CONVERTED TO GRID BY MULTIPLYING THE COMBINED SCALE FACTOR OF 0.999596. COORDINATE VALUES ARE TO URBAN ACCURACY IN ACCORDANCE WITH SECTION 14 (2) OF O. REG. 216/10

POINT ID	NORTHING	EASTING
A	4807522.115	553255.555
B	4807729.637	553531.522

CAUTION: COORDINATES CANNOT, IN THEMSELVES, BE USED TO RE-ESTABLISH CORNERS OR BOUNDARIES SHOWN ON THIS PLAN.

**METRIC**  
DISTANCES SHOWN ON THIS PLAN ARE IN METRES AND CAN BE CONVERTED TO FEET BY DIVIDING BY 0.3048.  
DISTANCES ARE GROUND AND CAN BE CONVERTED TO GRID BY MULTIPLYING THE COMBINED SCALE FACTOR OF 0.999596.

**BEARING REFERENCE**  
BEARINGS ARE UTM GRID, DERIVED FROM SIMULTANEOUS GPS OBSERVATIONS FROM MONUMENT A TO B, SHOWN HEREON, HAVING A BEARING OF N55°01'05"E, NAD83 (CSRS), AND ARE REFERRED TO THE CENTRAL MERIDIAN OF UTM ZONE 17 (87° WEST LONGITUDE).

**LEGEND**

- DENOTES SURVEY MONUMENT FOUND
- DENOTES SURVEY MONUMENT PLANTED
- S.L.B. DENOTES STANDARD IRON BAR
- LB. DENOTES IRON BAR
- W.L. DENOTES WITNESS
- (103) DENOTES ORIGIN UNKNOWN
- (275) DENOTES BLACK SHOEMAKER ROBINSON DONALDSON
- (1186) DENOTES M. VOHSEVELD, O.L.S.
- (1114) DENOTES METZ AND LORENZ LTD.
- (1426) DENOTES MacDONALD-TAMBLYN SURVEYING LTD.
- (1073) DENOTES C.A. MacDONALD SURVEYING LTD.
- (912) DENOTES A.J. CLARKE AND ASSOCIATES LTD.
- (408) DENOTES J.D. BARNES LIMITED

P.1 DENOTES PLAN 58R-1829  
P.2 DENOTES PLAN 58R-17565  
P.3 DENOTES PLAN 58R-17566

NOTE: ALL FOUND BARS (1426) UNLESS SHOWN OTHERWISE

**SURVEYOR'S CERTIFICATE**  
I CERTIFY THAT:  
1. THIS SURVEY AND PLAN ARE CORRECT AND IN ACCORDANCE WITH THE SURVEY ACT, THE SURVEYORS ACT AND THE LAND TITLES ACT AND THE REGULATIONS MADE UNDER THEM.  
2. THE SURVEY WAS COMPLETED ON THE 9th DAY OF SEPTEMBER, 2016.

SEPTEMBER 12, 2016  
DATE

*Paul R. J. Lord*  
ROD LORD  
ONTARIO LAND SURVEYOR

**MacDONALD TAMBLYN LORD SURVEYING**  
A Division of J.D. Barnes Limited  
Ontario Land Surveyors  
50 FLEMING DRIVE, UNIT 2, CAMBRIDGE, ON, N1T 2R1  
T: (519) 621-4660 F: (519) 621-4480 www.jdbarnes.com

DRAWN BY: RL  
CHECKED BY: *RL*  
FILE: 15-40-581-08  
REFERENCE NO.: 15-40-581-08  
DATED: 09/12/2016