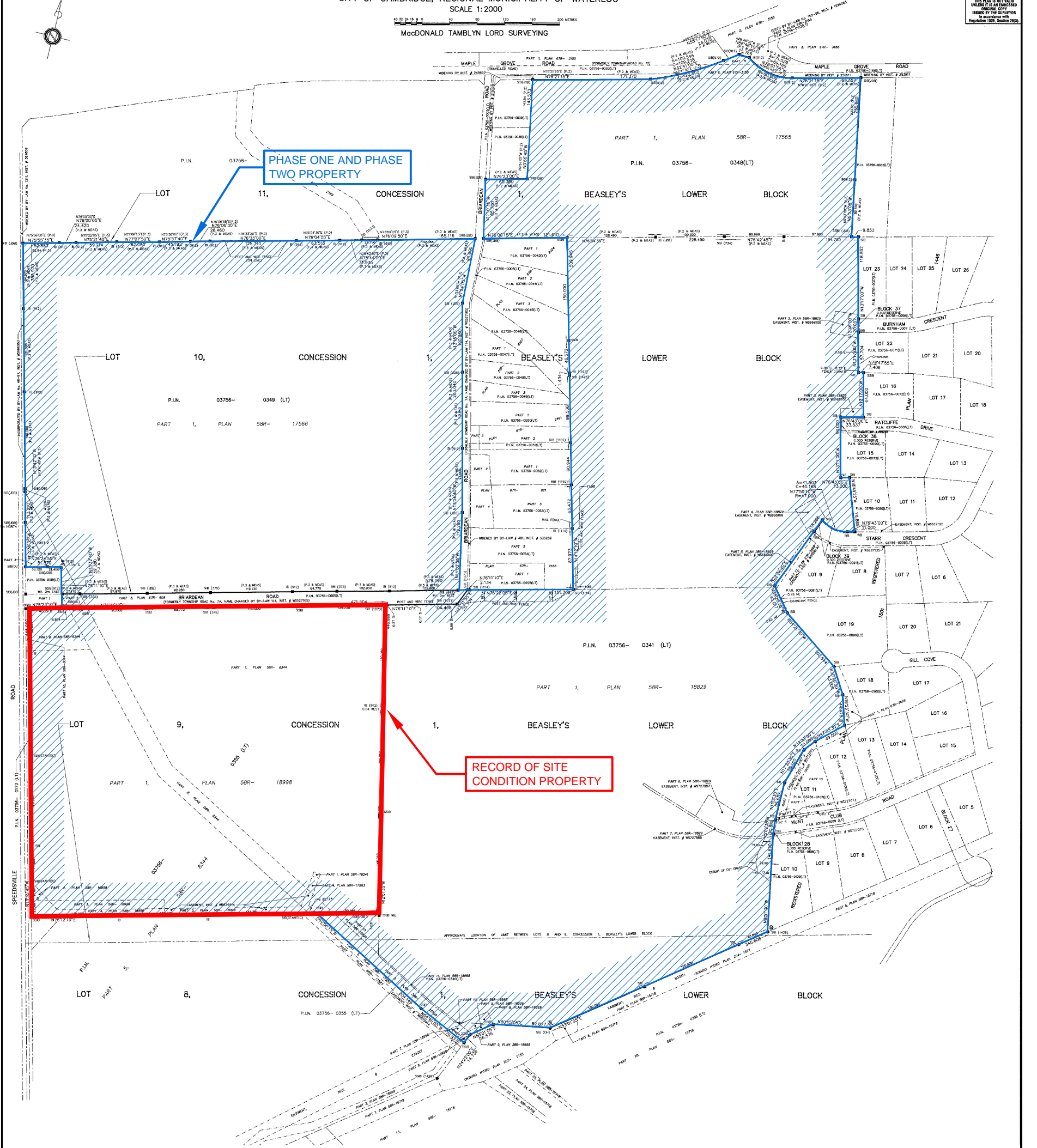


PLAN OF SURVEY OF
PART OF LOTS 8, 9, 10 AND 11, CONCESSION 1, BEASLEY'S LOWER BLOCK
(GEOGRAPHIC TOWNSHIP OF WATERLOO)
CITY OF CAMBRIDGE, REGIONAL MUNICIPALITY OF WATERLOO
SCALE 1:2000
MacDONALD TAMBLYN LORD SURVEYING

ASSOCIATION OF ONTARIO
LAND SURVEYORS
PLAN SURVEYORS FORM
1984/14
THIS PLAN IS NOT VALID
UNLESS IT IS APPROVED
BY THE SURVEYOR
IN ACCORDANCE WITH
REGULATION 219, SECTION 2(3)



INTEGRATION DATA		
ALL COORDINATES ARE IN METRES, DERIVED FROM GPS OBSERVATIONS, USING THE CAN-NET NETWORK AND ARE REFERRED TO UTM ZONE 17 (87° WEST LONGITUDE) NAD83 (CSRS). DISTANCES ARE GROUND AND CAN BE CONVERTED TO GRID BY MULTIPLYING THE COMBINED SCALE FACTOR OF 0.999596.		
COORDINATE VALUES ARE TO URBAN ACCURACY IN ACCORDANCE WITH SECTION 14 (2) OF O. REG. 216/10		
POINT ID	NORTHING	EASTING
A	4807522.115	553255.555
B	4807729.637	553531.522
CAUTION: COORDINATES CANNOT, IN THEMSELVES, BE USED TO RE-ESTABLISH CORNERS OR BOUNDARIES SHOWN ON THIS PLAN.		

METRIC	
DISTANCES SHOWN ON THIS PLAN ARE IN METRES AND CAN BE CONVERTED TO FEET BY DIVIDING BY 0.3048.	
DISTANCES ARE GROUND AND CAN BE CONVERTED TO GRID BY MULTIPLYING THE COMBINED SCALE FACTOR OF 0.999596.	
BEARING REFERENCE	
BEARINGS ARE UTM GRID, DERIVED FROM SIMULTANEOUS GPS OBSERVATIONS FROM MONUMENT A TO B, SHOWN HEREON, HAVING A BEARING OF N55°01'05"E, NAD83 (CSRS), AND ARE REFERRED TO THE CENTRAL MERIDIAN OF UTM ZONE 17 (87° WEST LONGITUDE).	

LEGEND	
■	DENOTES SURVEY MONUMENT FOUND
□	DENOTES SURVEY MONUMENT PLANTED
S.L.B.	DENOTES STANDARD IRON BAR
LB	DENOTES IRON BAR
W.L.	DENOTES WITNESS
(103)	DENOTES ORIGIN UNKNOWN
(275)	DENOTES BLACK SHOEMAKER ROBINSON DONALDSON
(1186)	DENOTES M. VOHSEVELD, O.L.S.
(1114)	DENOTES METZ AND LORENZ LTD.
(1426)	DENOTES MacDONALD-TAMBLYN SURVEYING LTD.
(1073)	DENOTES C.A. MacDONALD SURVEYING LTD.
(912)	DENOTES A.J. CLARKE AND ASSOCIATES LTD.
(408)	DENOTES J.D. BARNES LIMITED
P.1	DENOTES PLAN 58R-1829
P.2	DENOTES PLAN 58R-17565
P.3	DENOTES PLAN 58R-17566

SURVEYOR'S CERTIFICATE
I CERTIFY THAT:
1. THIS SURVEY AND PLAN ARE CORRECT AND IN ACCORDANCE WITH THE SURVEY ACT, THE SURVEYORS ACT AND THE LAND TITLES ACT AND THE REGULATIONS MADE UNDER THEM.
2. THE SURVEY WAS COMPLETED ON THE 9th DAY OF SEPTEMBER, 2016.

SEPTEMBER 12, 2016
DATE

Paul R. J. Lord
ROD LORD
ONTARIO LAND SURVEYOR

MacDONALD TAMBLYN LORD SURVEYING
A Division of J.D. Barnes Limited
Ontario Land Surveyors
50 FLEMING DRIVE, UNIT 2, CAMBRIDGE, ON, N1T 2R1
T: (519) 621-4660 F: (519) 621-4480 www.jdbarnes.com

DRAWN BY: R.L. CHECKED BY: *RL* REFERENCE NO.: 15-40-581-08
FILE: 15-40-581-08 DATED: 09/12/2016