

**SITE STATISTICS**

Zoning : R-6 (proposed)  
 C of A - N/A  
 Lot area = 1,859.5 sq.m. 100%  
 Building coverage = 512.6 sq.m. 27.6%  
 Landscaped area = 340.0 sq.m. 18.3%  
 Asphalt / hard surface area = 1,006.9 sq.m. 54.1%

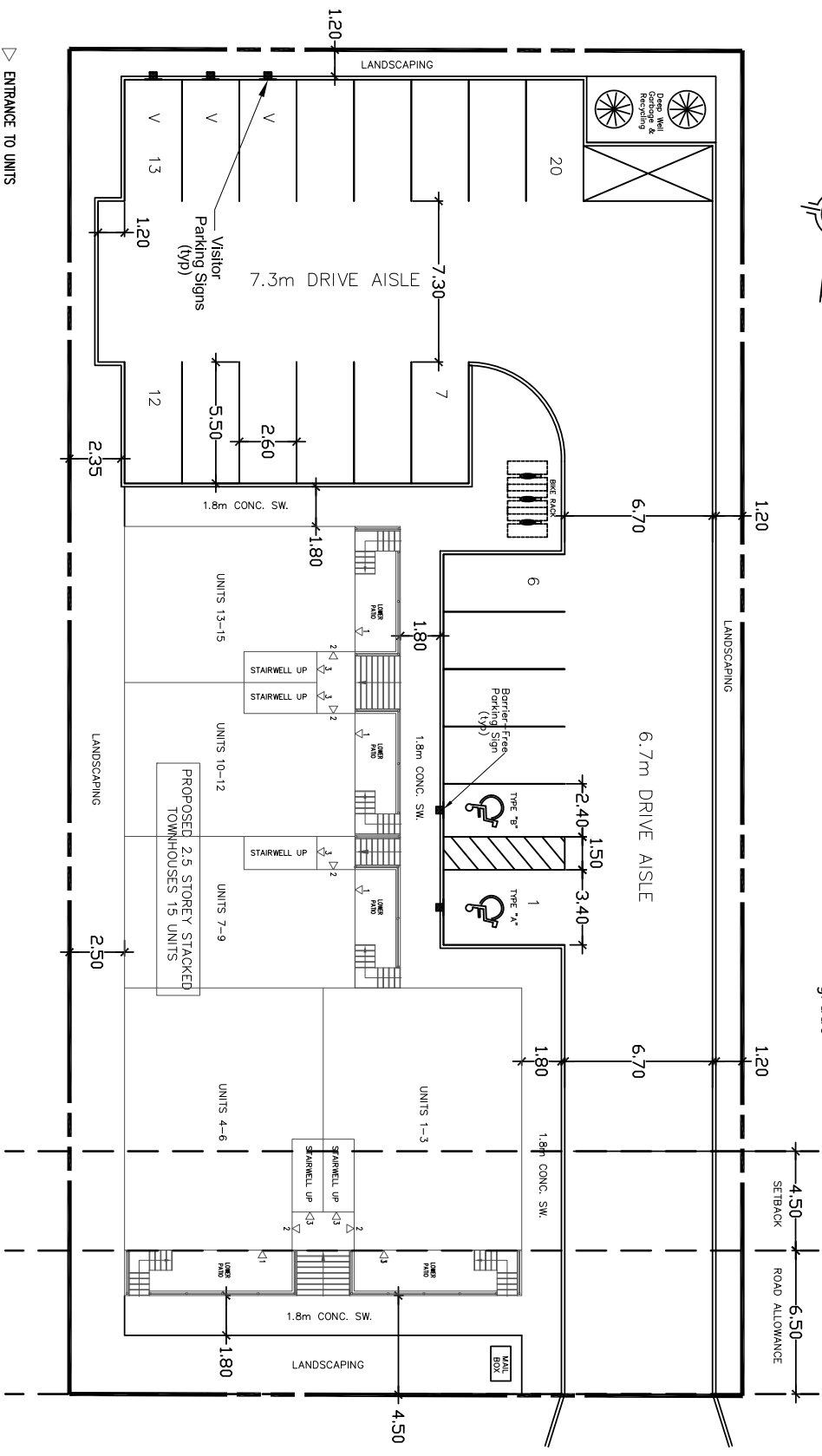
Parking Required - 19 Spaces  
 ( 1.25 spaces per unit)  
 Parking provided - 20 Spaces  
 Visitor parking required - 3 ( 15%)  
 Visitor parking provided - 3  
 Barrier free parking required - 2 ( 10%)  
 Barrier free parking provided - 2  
 Parking space minimum dimensions:  
 2.6 m X 5.5 m regular space  
 3.4 m X 5.5 m barrier free space (Type "A")  
 2.4 m X 5.5 m Barrier free space (Type "B")



**MULTI-RESIDENTIAL**

Number of Units - 15  
 FSR - 0.75

- Notes:
1. All driveways to have asphalt surface materials. All sidewalk crossings of driveways to have concrete surface material.
  2. All asphalt areas to be defined with 0.15m high poured concrete curbing
  3. Maximum height for townhouses is 10.5m
  4. Barrier-free spaces to have benched asphalt to match sidewalk grade



▷ ENTRANCE TO UNITS

**SITE PLAN**

OWNERS NAME : BHR PROPERTIES INC.	SCALE : 1:300	REVISED:
SITE ADDRESS: 932 EAGLE ST.	DATE: OCT. 28, 2021	SITE PLAN APPLICATION NO.
<b>City of Cambridge</b>		PART OF LOT
DIGITAL FILE: SP-932 EAGLE ST.PDF		