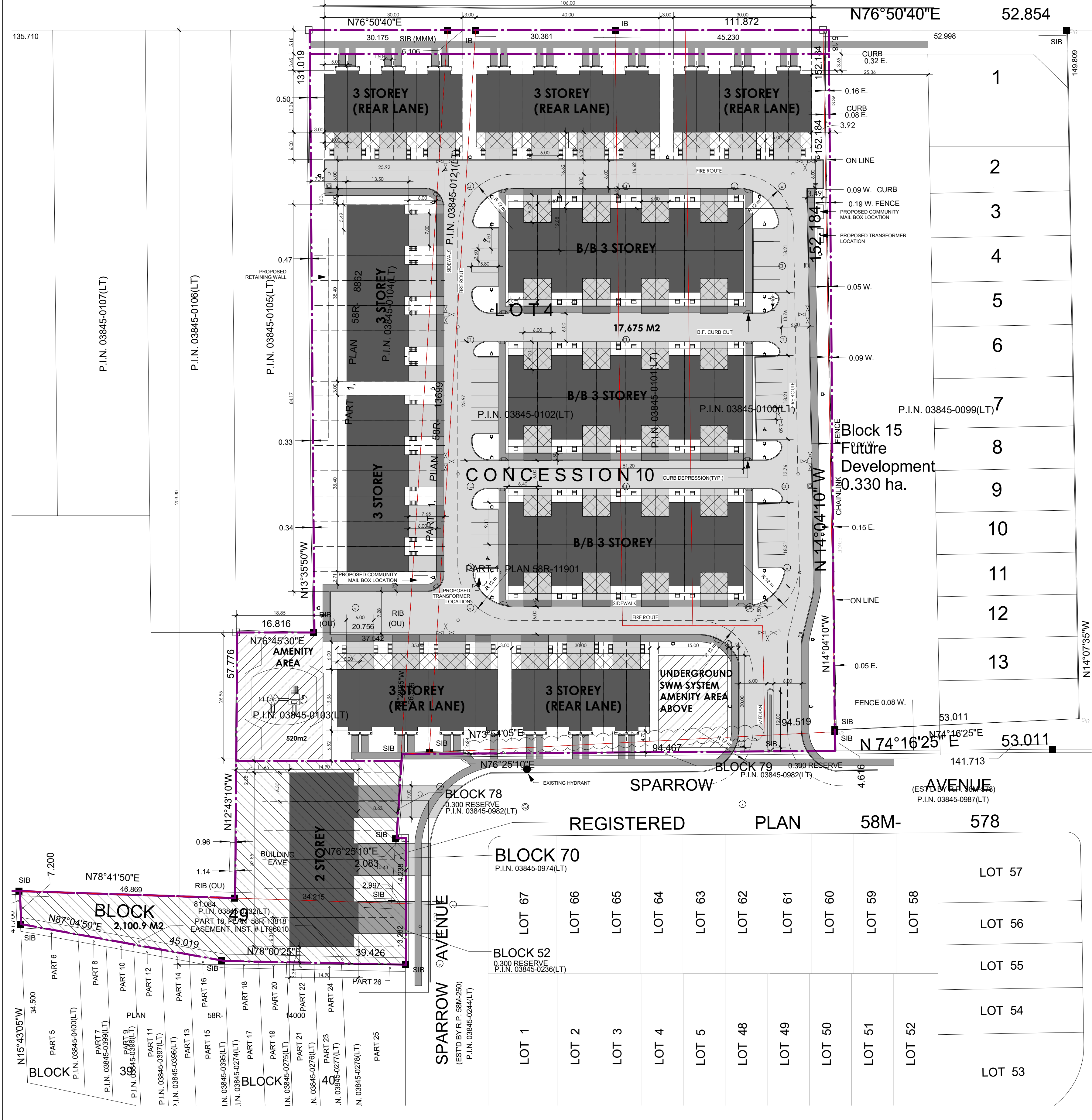


T EAST)  
BY-LAW)

DEPOSIT PLAN 405  
P.I.N. 03826-0002(LT)

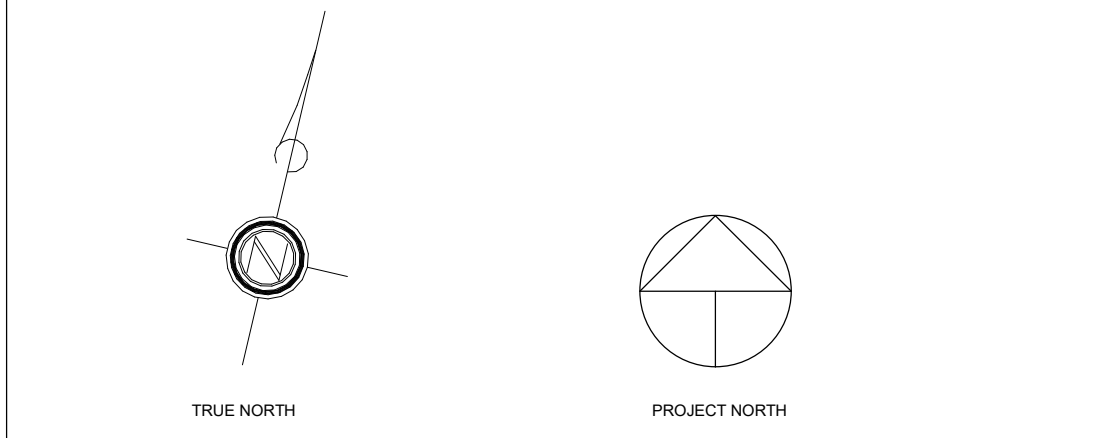
REGIONAL ROAD No. 97 (MAIN STREET)  
(TRANSFERRED BY ORDER IN COUNCIL 2769/75 PART 1, PLAN 67G-942)

(ROAD ALLOWANCE)



PLAN OF SURVEY OF  
PART OF LOT 4, CONCESSION 10,  
(GEOGRAPHIC TOWNSHIP OF NORTH DUMFRIES)  
BLOCK 49, REGISTERED PLAN 58M-250, AND  
BLOCK 70, REGISTERED PLAN 58M-578  
CITY OF CAMBRIDGE  
REGIONAL MUNICIPALITY OF WATERLOO

SCALE 1:500  
MacDONALD TAMBLYN LORD SURVEYING



**LEGEND**

---	PROPERTY LINE	▨	SITE 2	▨	AMENITY SPACE
- - -	FIRE ROUTE	○	LIGHT POST	▨	TERRACE SPACE
○	BARRIER FREE CURB CUT	○	CATCHBASIN	○	STORM MANHOLE
○	HYDRANT	○	HYDRANT	○	STORM CATCH-BASIN MANHOLE
○	VALVE	○	VALVE	○	SANITARY MANHOLE

REFER TO SITE SERVICING PLAN

825-875 MAIN STREET EAST, CAMBRIDGE, ON

PROVISION	REQUIREMENT - SITE 1	REQUIREMENT - SITE 2
Zoning	Residential (RM3) (5.0m frontage (Site Specific Exception - xxxx))	
Total Lot Area	1,7675 ha (4.37 ac)	0,2101 ha (0.52 ac)
Total Building Coverage Area	6,918.4 sq m	548 sq m
Building Coverage	39.14 %	26.08 %
Landscape Area/Open Space	3468.6 sq m	537 sq m
Asphalt/ Hard Surface Area	7,288 sq m	208 sq m
Parking Required	1 per unit (95) + 1 per 2 dwelling (48) = 143	1 per unit (6) + 1 per 2 dwelling (3) = 9
Visitor Parking Required	48	3
Parking Provided	220 (2 space per unit + 30 common area)	12 (2 space per unit)
Residential Units Summary	95 Units	6 Units

GROSS FLOOR AREA & AMENITY SPACE - SITE 1

TYPE	G.F.A. (SQ.M. & SQ.F.)	UNITS	TOTAL (SQ.M. & SQ.F.)	AMENITY SPACE PER UNIT (SQ.M. & SQ.F.)
3 STOREY	198.26 sq m. (2,134.05 sq f.)	14	2,775.66 sq m. (29,876.99 sq f.)	49.189 sq m. (196.87 sq f.)
3 STOREY REAR LANE	175.37 sq m. (1,887.68 sq f.)	33	5,787.26 sq m. (62,293.53 sq f.)	35.833 sq m. (385.70 sq f.)
B / B (2 bedrooms)	129.62 sq m. (1,395.23 sq f.)	12	1,555.45 sq m. (16,742.76 sq f.)	17.805 sq m. (191.65 sq f.)
B / B (3 bedrooms)	129.62 sq m. (1,395.23 sq f.)	36	4,666.36 sq m. (50,228.28 sq f.)	17.805 sq m. (191.65 sq f.)
TOTAL	-	95	14,784 sq m. (159,142 sq f.)	-

GROSS FLOOR AREA - SITE 2

TYPE	G.F.A. (SQ.M. & SQ.F.)	UNITS	TOTAL (SQ.M. & SQ.F.)
2 STOREY	164.10 sq m. (1,766.37 sq f.)	6	984.61 sq m. (10,598.23 sq f.)
TOTAL	-	6	985 sq m. (10,598 sq f.)



KEY PLAN

ALL WORK SHALL BE CARRIED OUT IN ACCORDANCE WITH THE LATEST ONTARIO BUILDING CODE.

THIS DRAWING SHALL NOT BE USED FOR CONSTRUCTION PURPOSES UNLESS THE NOTE ISSUE FOR CONSTRUCTION APPEARS IN THE ISSUES AND REVISIONS COLUMN, AND IS SEALED AND SIGNED BY AN ARCHITECTS.

CONTRACTOR IS TO CHECK AND VERIFY ALL DIMENSIONS AND CONDITIONS ON THE PROJECT AND REPORT ANY DISCREPANCIES TO THE ARCHITECT BEFORE PROCEEDING WITH THE WORK. DRAWINGS ARE NOT TO BE SCALED.

CONTRACT DOCUMENTS ARE THE COPYRIGHT OF THE CONSULTANTS AND SHALL NOT BE USED OR REPRODUCED WITHOUT AUTHORIZATION. DOCUMENTS ARE TO BE RETURNED UPON COMPLETION OF THE PROJECT.

REVISIONS

#	DB	DATE	REMARKS
001	FL	2017 06 13	ISSUED FOR SUBMISSION
001	FL	2017 01 26	ISSUE FOR REVIEW

ARCHITECT



SEALS



PROJECT TITLE

CAMBRIDGE TOWNHOUSE DEVELOPMENT

825-875 Main St. E. Cambridge ON

DRAWING TITLE

SITE PLAN & SITE STATISTICS

DRAWN BY

FL

SCALE

As indicated

DATE

JUNE 2017

CHECKED BY

FL

PROJECT NUMBER

16-128

DRAWING NUMBER

A-1.1