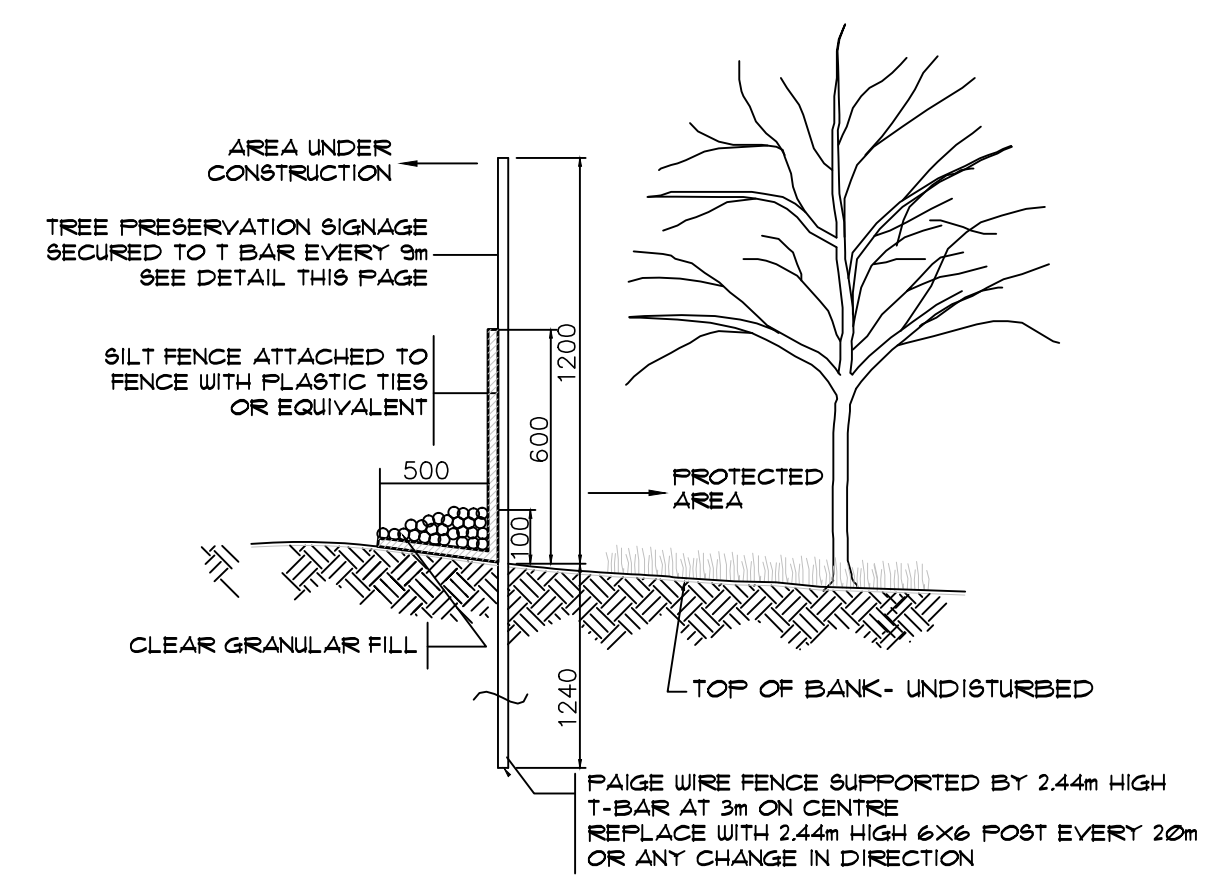


TREES 2A AND 3A ARE ONLY TO BE REMOVED WITH THE PERMISSION OF THE CITY OF CAMBRIDGE

LEGEND	
	EXISTING TREES TO REMAIN
	EXISTING TREES TO BE REMOVED
	TREE PROTECTION FENCE
	EXISTING BOARD FENCE TO REMAIN
	EXISTING WIRE FENCE TO BE REMOVED

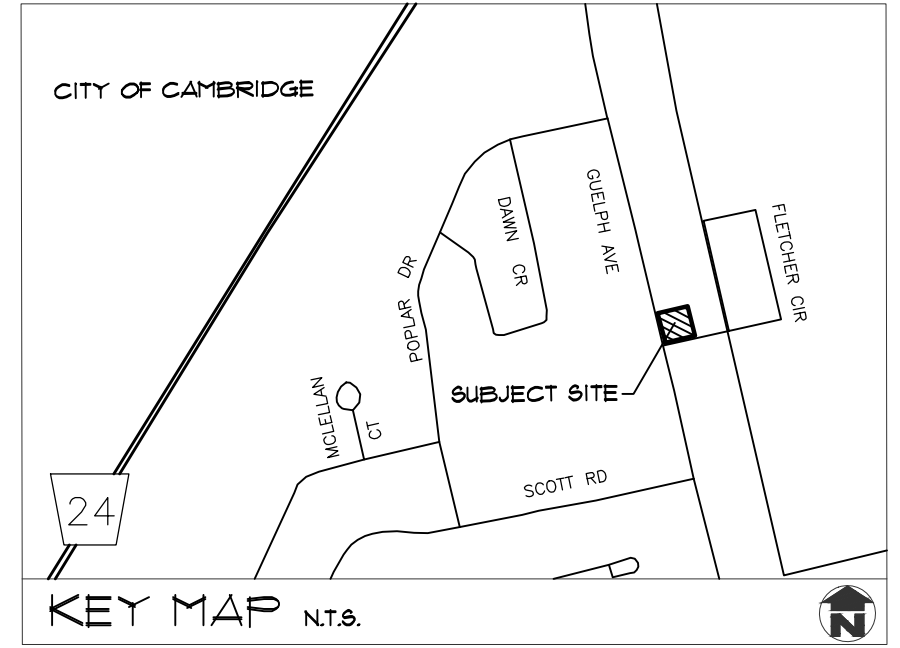
NOTE:  
 SITE VISIT DATE: MARCH 19, 2020  
 TREE INVENTORY COMPLETED BY ISA CERTIFIED ARBORIST CATHERINE HODGINS \*ON-2258A  
 TREE LOCATIONS BASED ON MACDONALD TAMBLYN LORD SURVEYING TOPOGRAPHIC SKETCH DATED MARCH 24, 2020 AND MACKINNON & ASSOCIATES FIELD SURVEY ON MARCH 19, 2020.  
 \*A\* INDICATES APPROXIMATE LOCATION BASED ON MACKINNON & ASSOCIATES FIELD SURVEY AND AERIAL PHOTOGRAPHY.

EXISTING TREE LIST					
NO.	SPECIES	D.B.H	CONDITION	STATUS	ADDITIONAL NOTE
1A.	Acer platanoides	65cm	Good	Preserve	Co-dominant stems with included bark on adjacent property
2A.	Acer saccharum	9.5cm	Good	Remove	In ROW
3A.	Acer saccharum	9cm	Good	Remove	In ROW, trunk wound
4A.	Acer saccharum	8cm	Fair	Preserve	In ROW, trunk wound
375.	Picea glauca	52cm	Fair	Remove	Suppressed
376.	Acer platanoides	39cm	Good	Remove	Co-dominant stems
377.	Acer saccharum	52cm	Good	Remove	Co-dominant stems with included bark
378.	Picea glauca	52cm	Good	Remove	Co-dominant stems, suppressed
379.	Acer saccharum	40cm	Fair	Remove	25% dead branches, co-dom stems w incl bark
380.	Acer platanoides	44cm	Good	Remove	
381.	Acer saccharum	59cm	Good	Remove	Co-dominant stems
382.	Acer saccharum	46.5cm	Good	Remove	Co-dominant stems
383.	Acer platanoides	31cm	Fair	Remove	15% dead branches
384.	Tilia cordata	33cm	Good	Remove	Co-dominant stems with included bark
385.	Acer saccharum	12cm	Good	Preserve	Dead leader
386.	Acer platanoides	40cm	Good	Preserve	Co-dominant stems with included bark
387.	Acer platanoides	32cm	Good	Preserve	Chain at base in bark, co-dom stems w incl bark
388.	Acer platanoides	19cm	Fair	Preserve	15% dead branches
389.	Gleditsia triacanthos	28cm	Fair	Preserve	Leaning towards adjacent property, crack in leader
390A.	Picea glauca	45cm	Good	Preserve	On adjacent property
391.	Acer platanoides	33cm	Good	Remove	
392.	Picea glauca	39cm	Good	Preserve	On adjacent property
393.	Acer platanoides	34cm	Good	Remove	Girdling root visible
394.	Picea glauca	33cm	Fair	Remove	Small crown, suppressed
395.	Acer platanoides	23cm	Fair	Remove	Girdling root visible
396.	Picea glauca	44cm	Good	Remove	
397.	Acer platanoides	24cm	Fair	Remove	Evidence of trunk rot
398.	Picea glauca	43cm	Good	Remove	10% dead branches
399.	Acer platanoides	43cm	Fair	Remove	Evidence of trunk decay
400.	Picea glauca	35cm	Good	Remove	



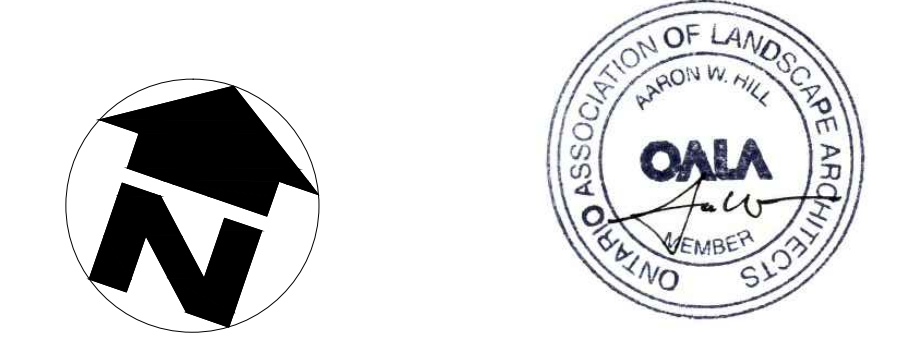
1 TREE PROTECTION FENCING  
 NTS

- TREE PROTECTION NOTES**
- AS PART OF ANY TREE REMOVAL OPERATION ALL STEMS, LIMBS AND STUMPS SHOULD BE REMOVED FROM THE SITE.
  - UPON COMPLETION OF ANY TREE REMOVAL OPERATIONS, TREE PROTECTION FENCING SHOULD BE INSTALLED AS ILLUSTRATED. THIS PROTECTION FENCING SHOULD BE MAINTAINED UNTIL ALL EXCAVATION AND BUILDING CONSTRUCTION WORK IS COMPLETED.
  - ANY ROOTS DISTURBED DURING CONSTRUCTION SHOULD BE CUT CLEANLY AND BURIED IMMEDIATELY.
  - NO HEAVY EQUIPMENT OR STOCKING OF MATERIAL SHALL OCCUR WITHIN THE DRIPLINES OF ANY TREES THAT ARE TO BE PRESERVED.
  - TREE PROTECTION MEASURES TO BE INSPECTED BY LANDSCAPE ARCHITECT AND CITY FORESTRY STAFF PRIOR TO START OF CONSTRUCTION.
  - IF CONSTRUCTION OR ANY WORK OCCURS WITHIN THE TREE PRESERVATION ZONE, INSIDE THE LIMITS OF THE TREE PROTECTION FENCE, IT IS NECESSARY TO ONLY USE HAND TOOLS. NO MACHINERY WILL BE PERMITTED IN THIS ZONE.
  - ANY EXISTING VEGETATION THAT IS IMPACTED DURING SITE DEVELOPMENT WILL BE REINSTATED TO THE SATISFACTION OF THE CITY.



- GENERAL NOTES**
- ALL WORKMANSHIP WILL BE TO THE STANDARDS OF LANDSCAPE ONTARIO.
  - CONTRACTOR TO LOCATE ALL UNDERGROUND UTILITIES.
  - SITE PLAN INFORMATION AS PER URBE DEVELOPMENTS INC.
  - SITE GRADING INFORMATION AS PER GM BLUEPLAN.
  - EXISTING CONDITIONS INFORMATION AS PER MACDONALD TAMBLYN LORD SURVEYING.

URBE DEVELOPMENTS INC.



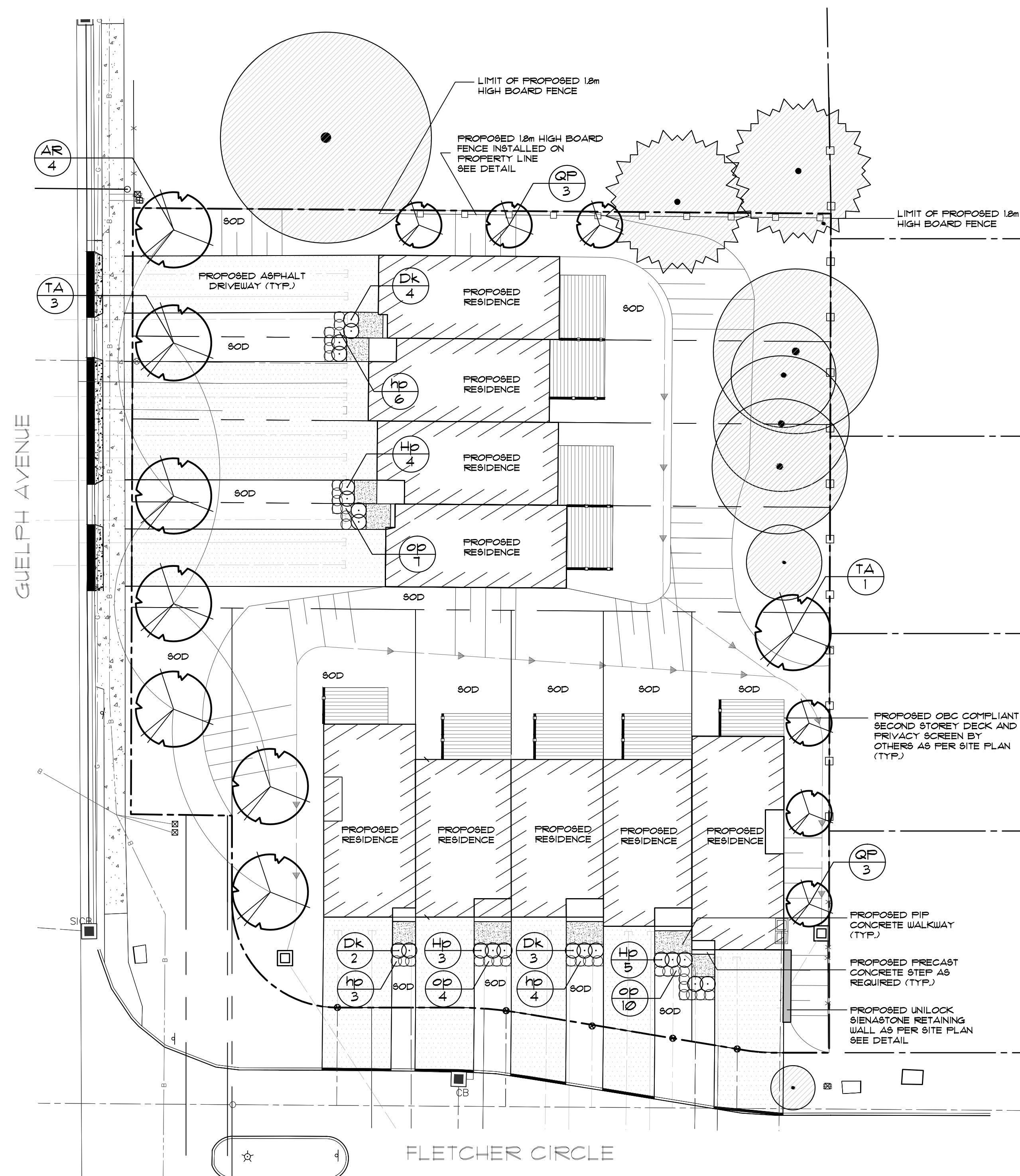
no.	date	description	by
1.	Sep.14.20	Issued for approval	CMH

PROPOSED DEVELOPMENT  
 355 GUELPH AVENUE  
 CITY OF CAMBRIDGE

Tree Management Plan

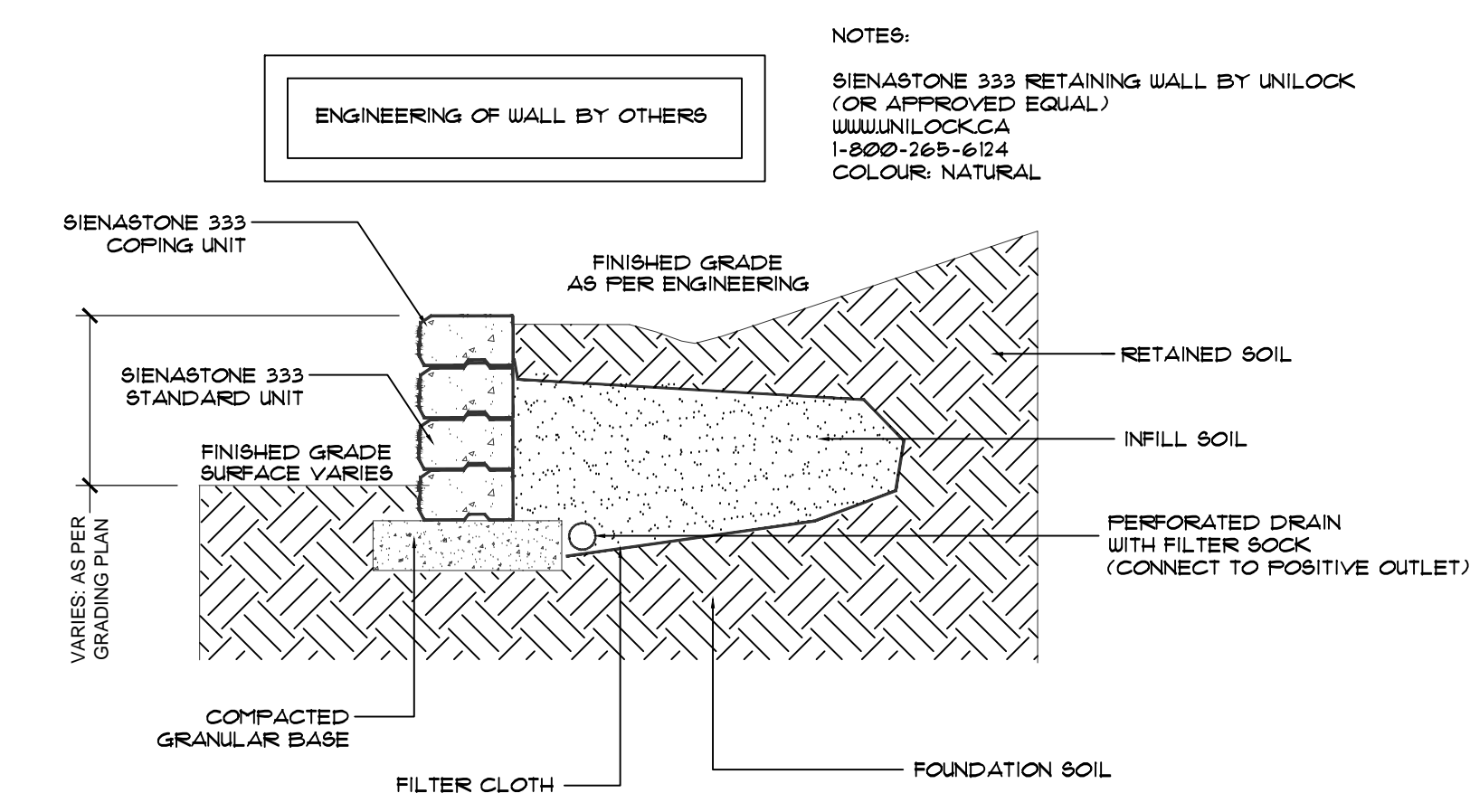
**MacKinnon & Associates**  
 Providing Solutions in Urban, Landscape and Environmental Planning  
 a division of 907216 Ontario Inc.  
 550 Parkside Drive, Unit A-21, Waterloo, Ontario N2L 5V4  
 Tel: (519) 725-5140 FAX: (519) 725-5144

DRAWN BY: CMH	DESIGNED BY: CMH	APPROVED BY: AWH
PROJECT NO. 2020-13	SCALE: 1:250	DATE: March 2020
PLOTTED: September 14, 2020	SHEET: L1	

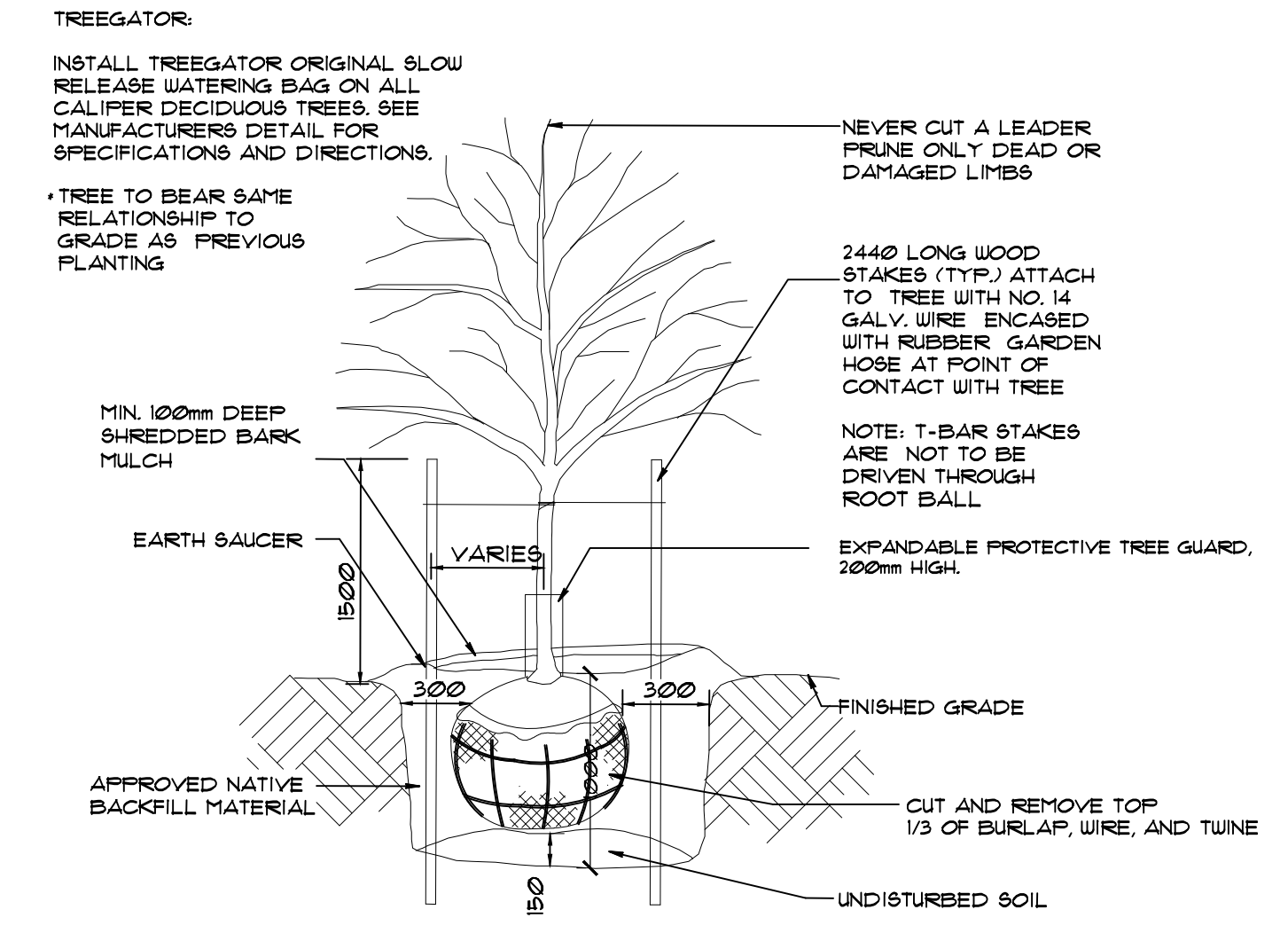


**PLANT MATERIAL LIST**

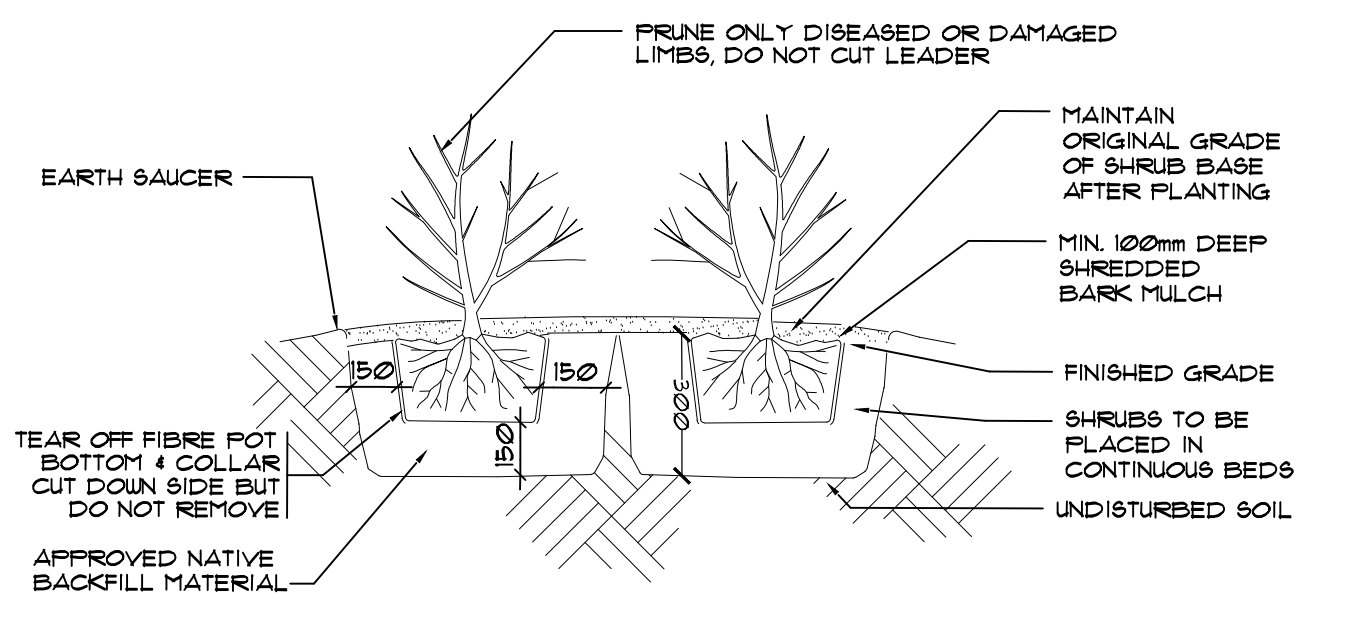
KEY	QUANT.	BOTANICAL NAME	COMMON NAME	SIZE	COND.
AR	4	Acer rubrum 'Armstrong'	Armstrong Red Maple	60mm cal.	W.B.
QP	6	Quercus palustris 'Green Pillar'	Green Pillar Oak	60mm cal.	W.B.
TA	4	Tilia americana 'Boulevard'	Boulevard Basswood	60mm cal.	W.B.
Dk	9	Diervilla x Kodiak Black	Kodiak Black Honeysuckle	3 gal.	Pot
Hp	12	Hypericum prostratum	Shrubby St. John's Wort	2 gal.	Pot
hp	13	Heimerocallis 'Purple d'Oro'	Purple d'Oro Daylily	1 gal.	Pot
op	21	Ophiopogon planiscapus 'Nigrescens'	Black Mondo Grass	1 gal.	Pot



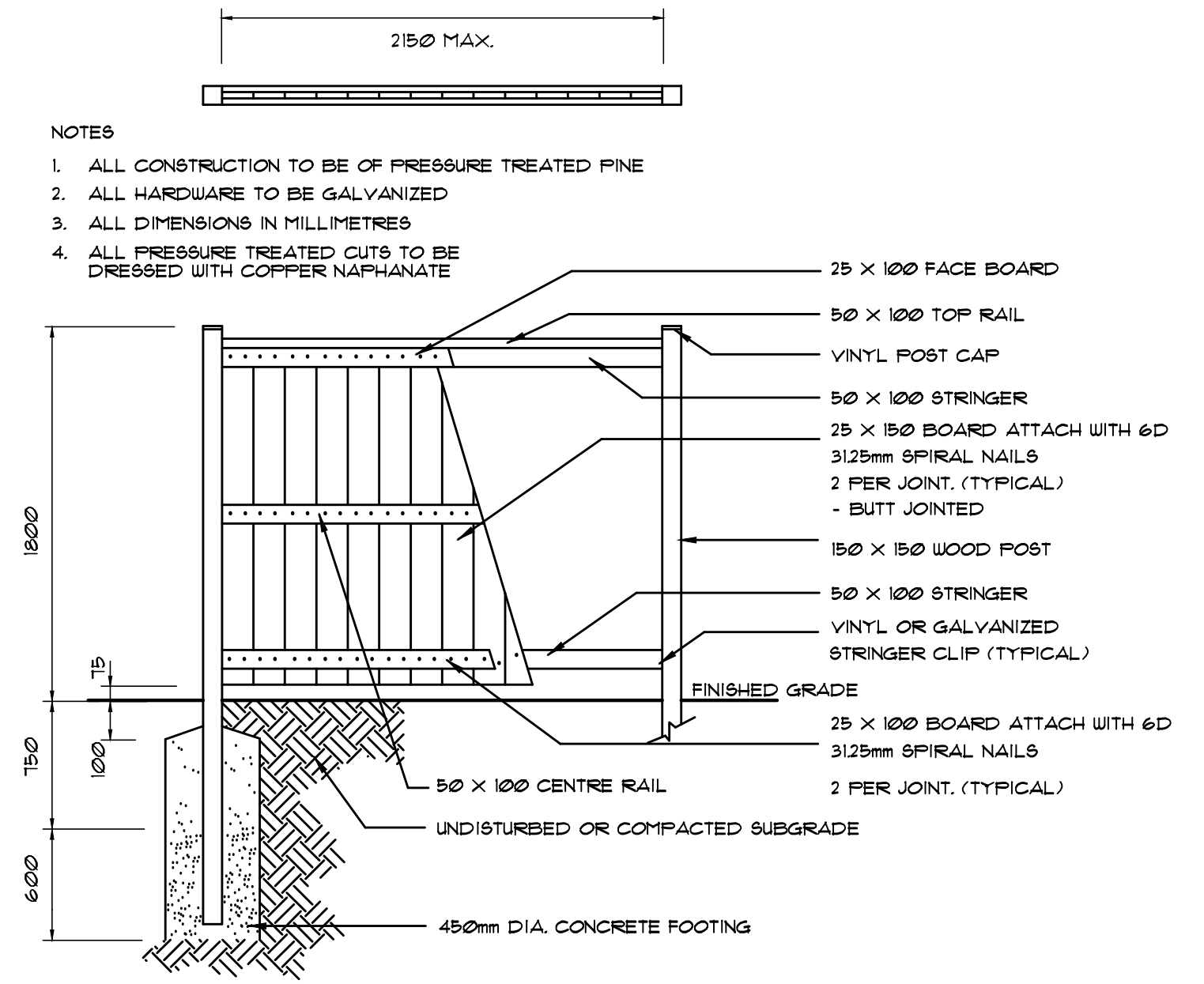
5 TYPICAL SIENASTONE RETAINING WALL DETAIL  
NTS



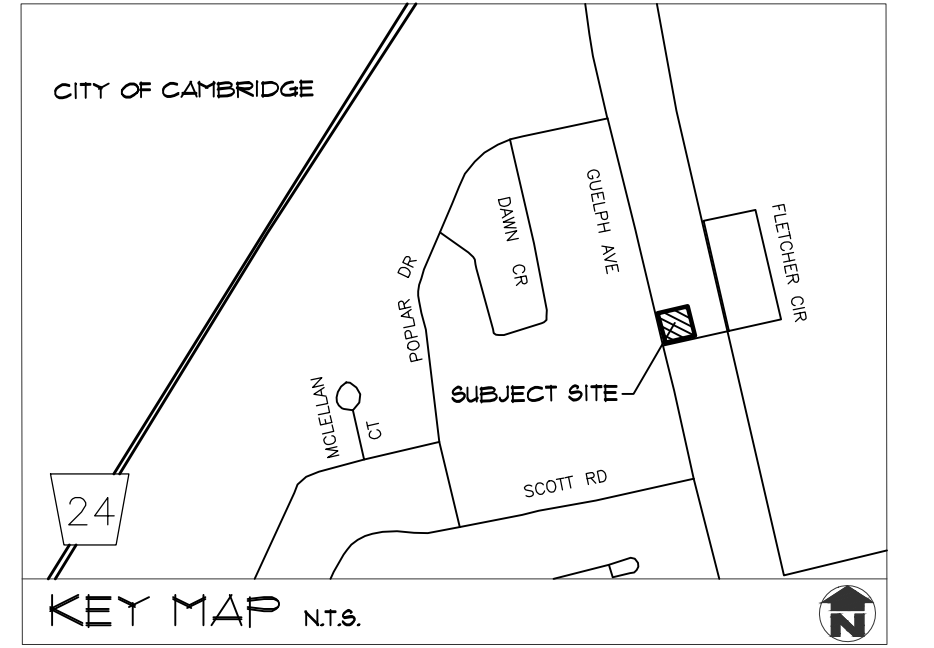
2 DECIDUOUS TREE PLANTING DETAIL  
NTS



3 SHRUB PLANTING DETAIL  
NTS

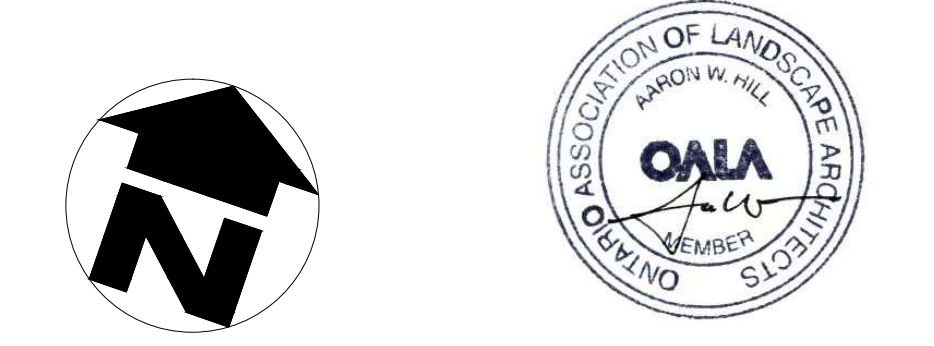


4 1.8m HIGH WOOD BOARD FENCE DETAIL  
NTS



- GENERAL NOTES**
- ALL WORKMANSHIP WILL BE TO THE STANDARDS OF LANDSCAPE ONTARIO.
  - ALL PLANT MATERIAL TO BE NO.1 GRADE NURSERY GROWN IN ACCORDANCE WITH THE CANADIAN STANDARDS FOR NURSERY STOCK, 6TH EDITION, 1998, BY THE CANADIAN NURSERY TRADES ASSOCIATION.
  - BACKFILL WILL CONSIST OF SOIL NATIVE TO THE SITE OR GENERAL SOIL TYPE/CLASS NATIVE TO THE SITE. TOPSOIL TO BE TESTED FOR NUTRIENT VALUE, AND AMENDED FOR OPTIMAL GROWTH AS PER THE RECOMMENDATIONS OF THE SOIL TEST.
  - CONTRACTOR SHALL MAINTAIN ALL LANDSCAPE AREAS UNTIL OWNER'S ACCEPTANCE OF PROJECT.
  - CONTRACTOR TO LOCATE ALL UNDERGROUND UTILITIES.
  - PLANTING MAY BE ADJUSTED TO SUIT LOCATIONS OF SITE UTILITY STRUCTURES/SERVICES.
  - ALL MATERIALS MUST BE APPROVED BY LANDSCAPE ARCHITECT PRIOR TO INSTALLATION.
  - SPREAD MULCH TO A MINIMUM OF 100mm COMPACTED DEPTH ON ALL TREE PITS AND PLANTING BEDS.
  - CHECK AND VERIFY ALL DIMENSIONS AND QUANTITIES PRIOR TO COMMENCEMENT OF WORK. ANY DISCREPANCIES ARE TO BE REPORTED IN WRITING TO THE LANDSCAPE ARCHITECT. QUANTITIES NOTED WITHIN THE PLAN SUPERCEDE THOSE IN THE PLANT LIST. ANY SUBSTITUTIONS SHALL BE APPROVED BY THE LANDSCAPE ARCHITECT.
  - SOD AS MARKED WITH NURSERY SOD ON A MINIMUM OF 100mm OF CLEAN TOPSOIL. FINE GRADE AND SOD ALL BOULEVARD AREAS TO MUNICIPAL SPECIFICATIONS AND REPAIR DAMAGE TO ADJACENT PROPERTIES, AS REQUIRED.
  - FINAL INSPECTION AND ACCEPTANCE OF PLANTING WORK SHALL COINCIDE WITH THE FINAL INSPECTION AND ACCEPTANCE OF ALL WORK INCLUDED IN THE CONTRACT.
  - ALL SEEDED SLOPES 3:1 AND GREATER TO RECEIVE EROSION CONTROL MATTING (COIR MAT, OR OTHER WILDLIFE FRIENDLY ALTERNATIVE). PIN SOD ON ALL SLOPES OF 3:1 OR GREATER.
  - SUBMIT A WRITTEN GUARANTEE TO THE EFFECT THAT ALL PLANTS ACCEPTED DURING THE PERIOD OF JANUARY 1st TO JULY 31st SHALL BE GUARANTEED UNTIL JULY 31st THE FOLLOWING YEAR. PLANTS ACCEPTED DURING THE PERIOD OF JULY 1st TO DECEMBER 31st SHALL BE GUARANTEED FOR ONE YEAR FROM THE DATE OF ACCEPTANCE. THE GUARANTEE PERIODS LISTED ABOVE SHALL APPLY TO ALL 'NURSERY GROWN' PLANTS.
  - AT THE TIME OF FINAL INSPECTION ALL PLANTS SHALL BE IN A HEALTHY, VIGOROUS GROWING CONDITION, PLANTED IN FULL ACCORDANCE WITH DRAWINGS AND CONDITIONS.
  - SITE PLAN INFORMATION AS PER URBE DEVELOPMENTS INC.
  - EXISTING TREE LOCATIONS AS PER MACDONALD TAMBLYN LORD SURVEYING.
  - SITE GRADING AND SERVICING AS PER GM BLUEPLAN.

URBE DEVELOPMENTS INC.



1. Sep.14.20	Issued for approval	CMH
no.	date	description
REVISIONS		

PROPOSED DEVELOPMENT  
355 GUELPH AVENUE  
CITY OF CAMBRIDGE

Landscape Plan & Details

**MacKinnon & Associates**  
Providing Solutions in Urban, Landscape and Environmental Planning  
a division of 907216 Ontario Inc.

550 Parkside Drive, Unit A-21, Waterloo, Ontario N2L 5V4  
Tel: (519) 725-5140 FAX: (519) 725-5144

DRAWN BY: CMH	DESIGNED BY: CMH	APPROVED BY: AWH
PROJECT NO. 2020-13	SCALE: 1:250	DATE: March 2020
PLOTTED: September 14, 2020	SHEET: L2	