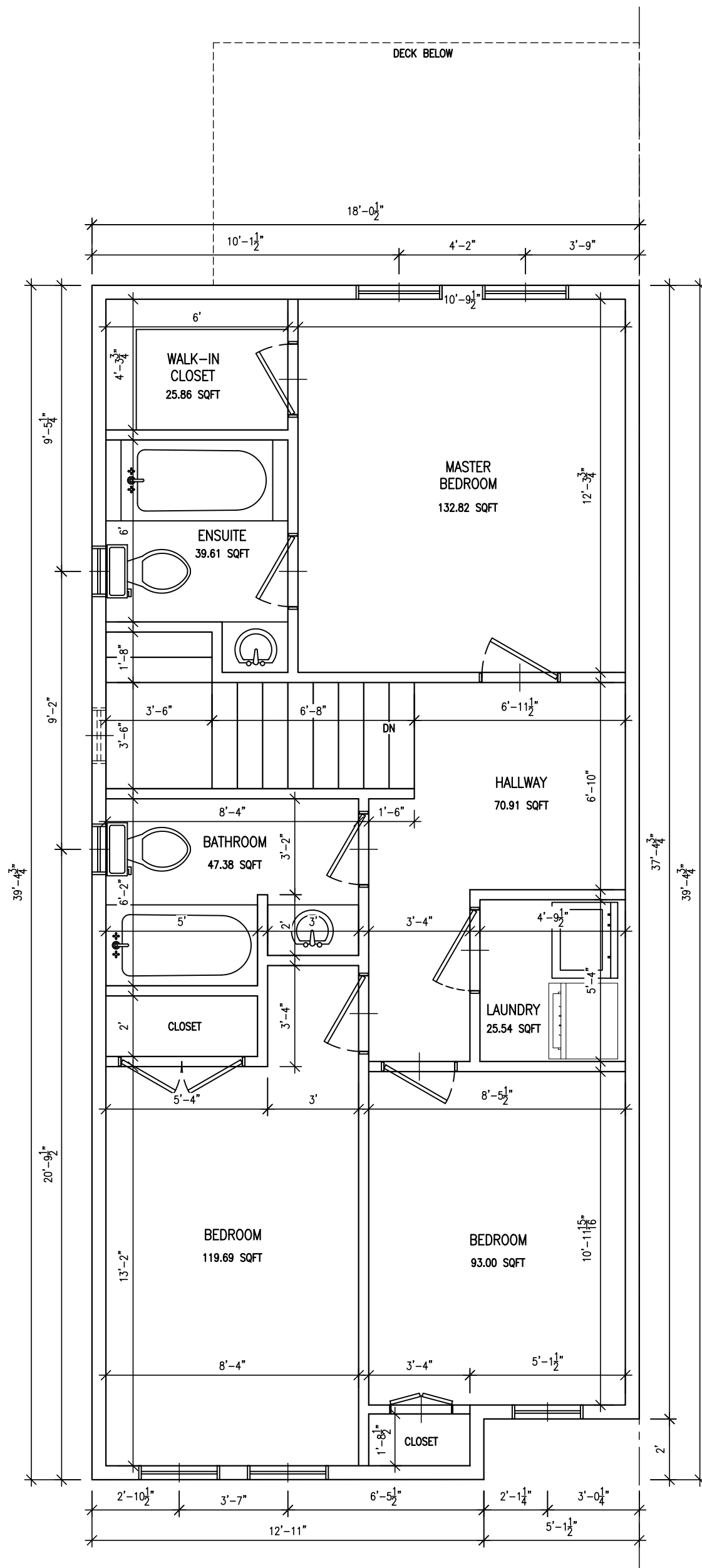
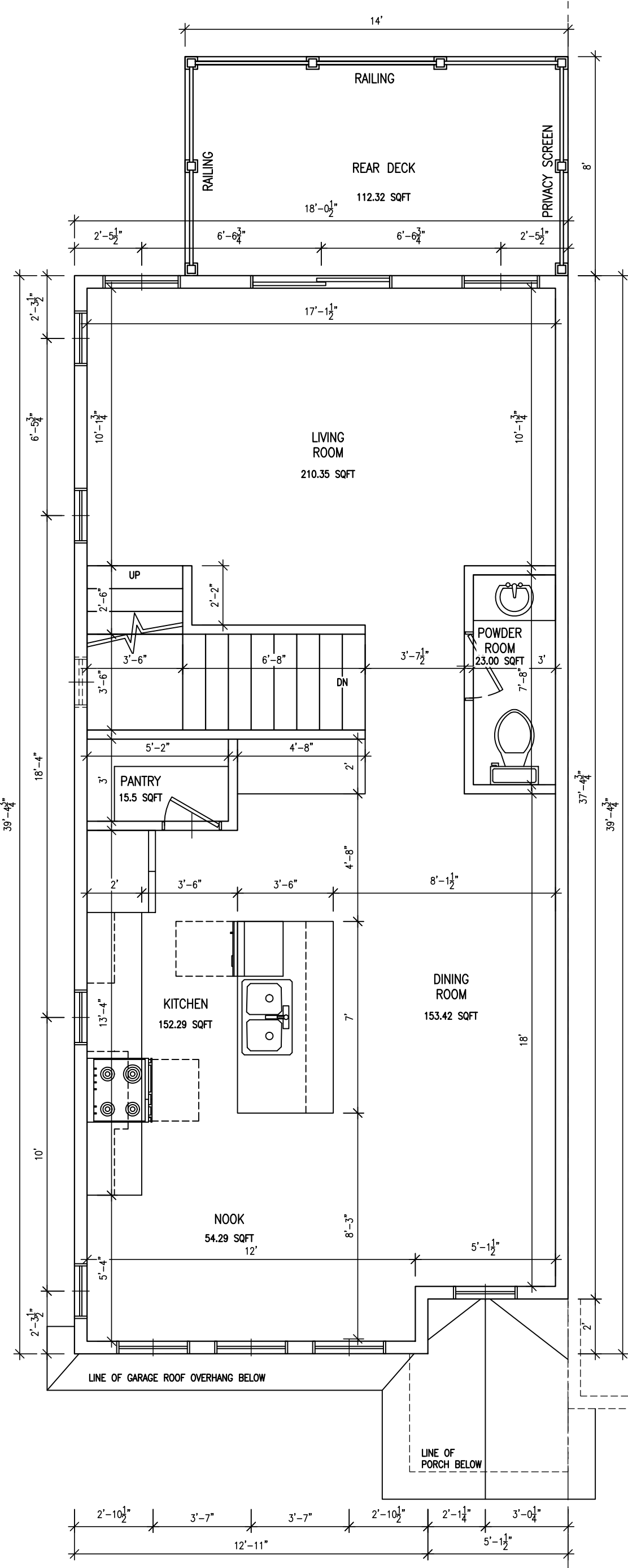
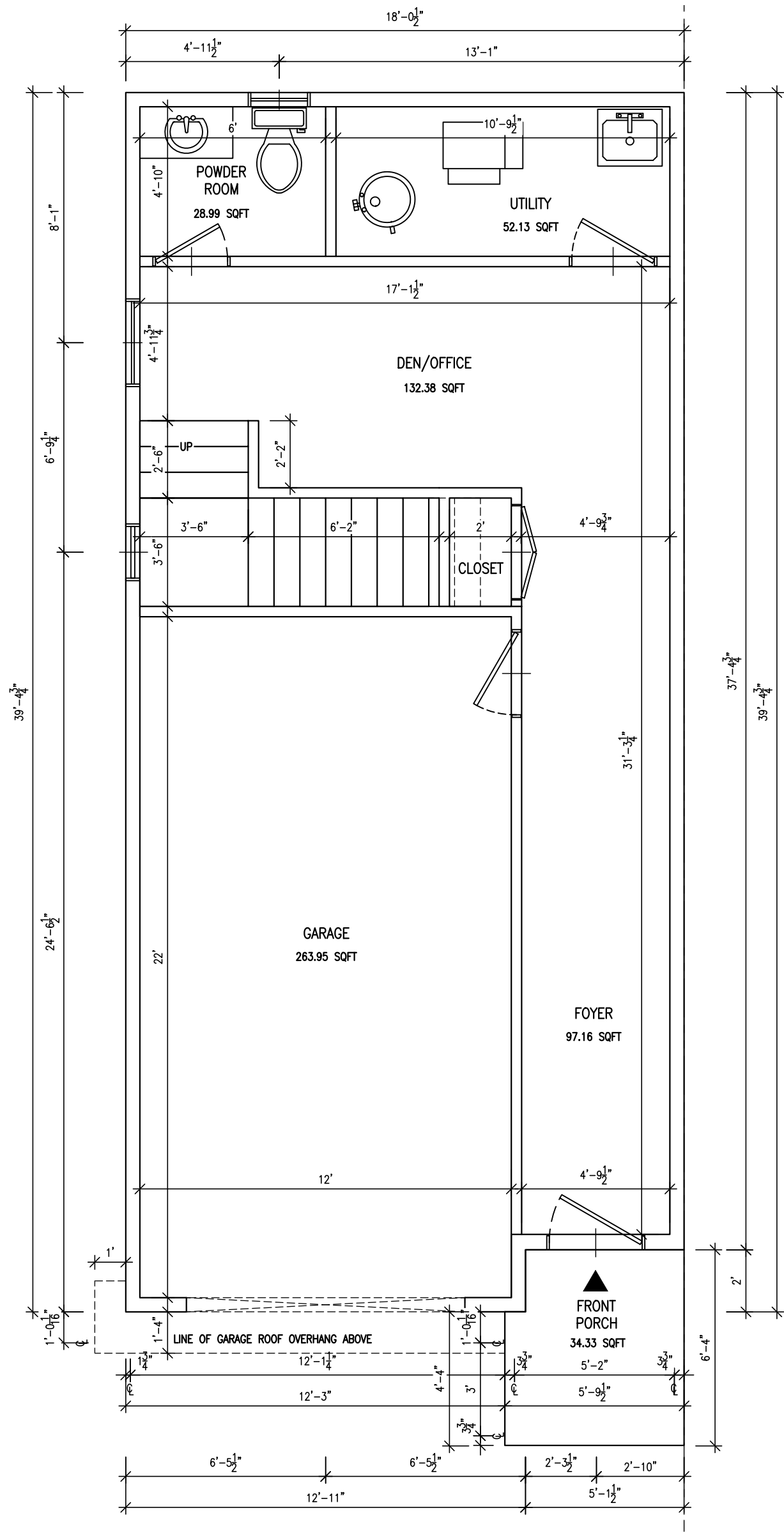
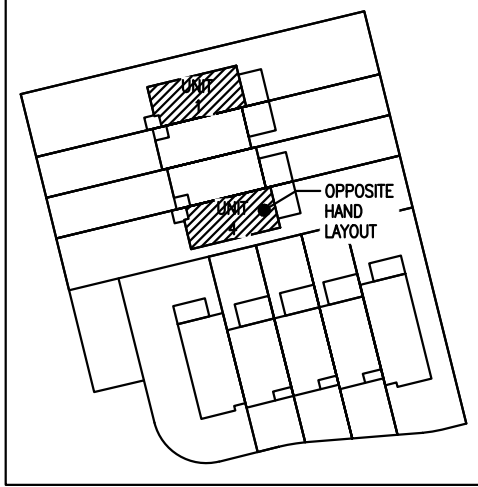


PROPERTY KEYMAP



Jac'design Inc.
692 Centre Road
Flamborough, Ontario
Canada, L8N 2Z7
(416) 993-1509
jacdesigninc@gmail.com

IN COLLABORATION WITH:

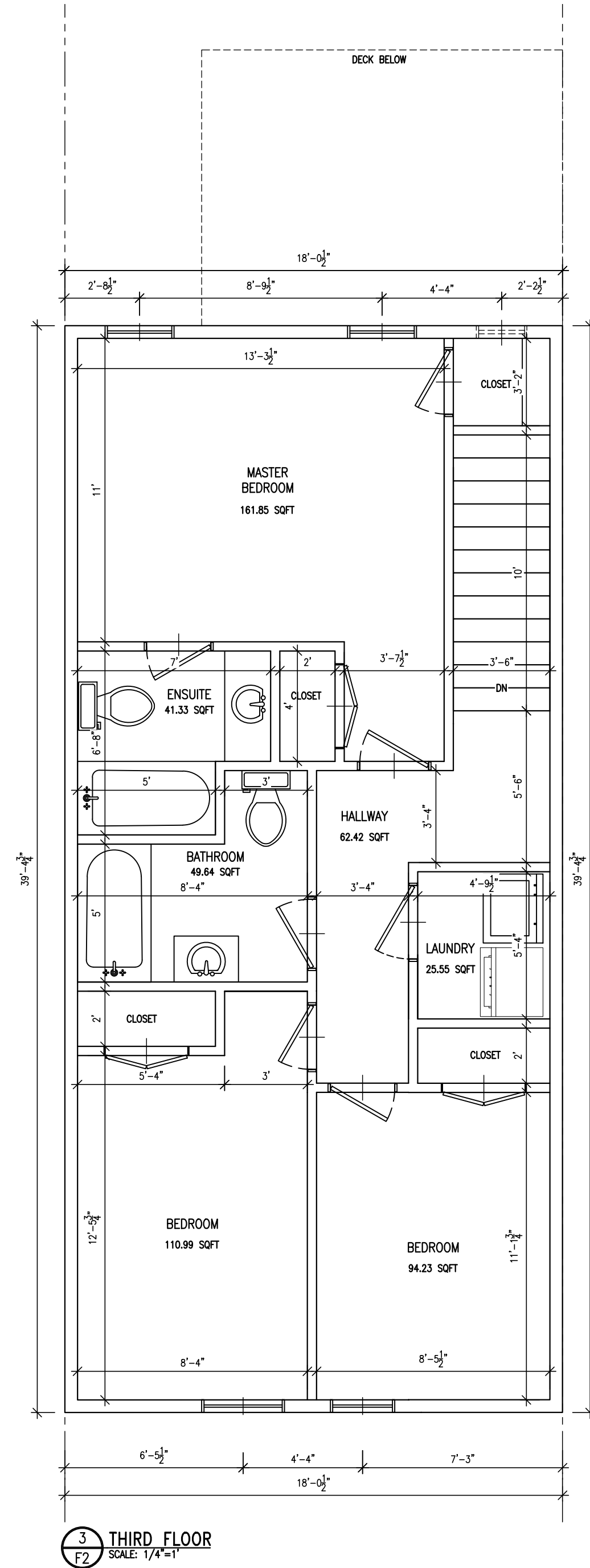
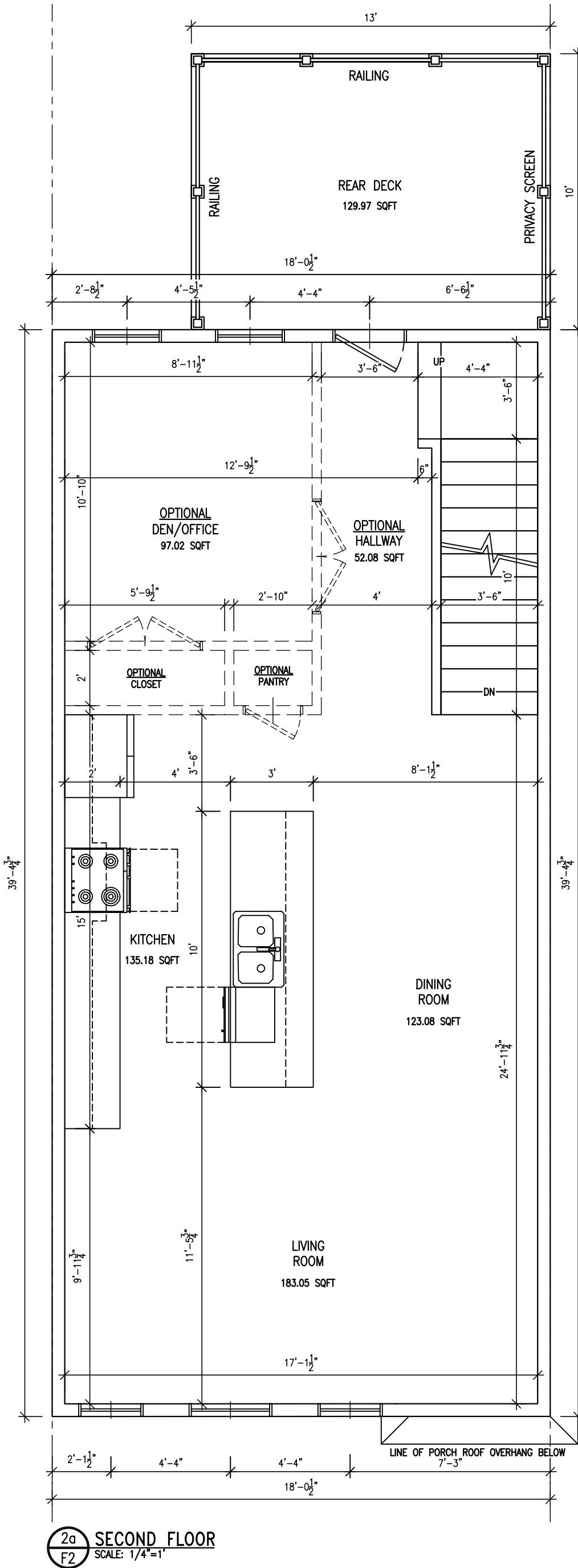
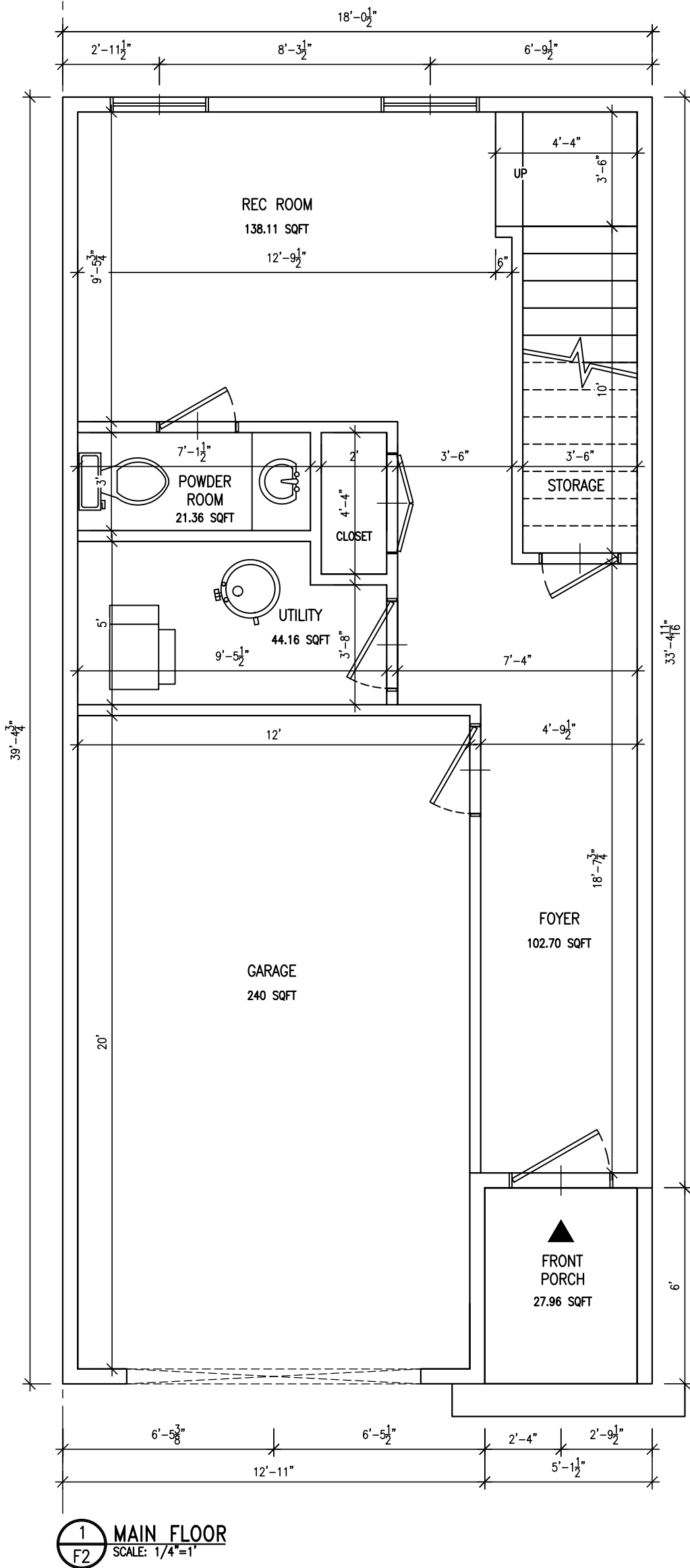
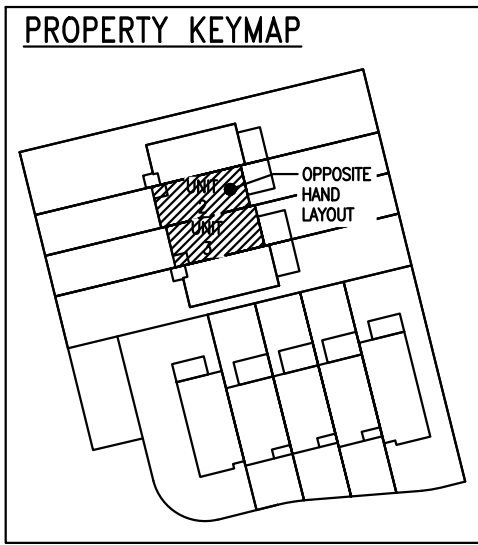
Urbe Developments
AND
CALIBER CONTRACTING

REV	DATE	REVISION DETAILS

THIS DRAWING AND ALL INFORMATION HEREIN IS THE EXCLUSIVE PROPERTY OF JAC'DESIGN INC. ANY REUSE OR REPRODUCTION OF THIS DRAWING WITHOUT THE EXPRESS WRITTEN CONSENT OF BOTH PARTIES AND MUST BE RETURNED UPON REQUEST.

URBE DEVELOPMENTS
PROJECT
TOWNHOUSE COMPLEX (GUELPH AVE)
UNIT 1 and 4

DRAWN BY:	JC
APPROVED BY:	DW
DATE:	09 Mar 2020
SCALE:	full
CAD FILE:	200502.dwg
SHEET	F1 of 4



Jac'design Inc.
692 Centre Road
Flamborough, Ontario
Canada, L8N 2Z7
(416) 993-1509
jacdesigninc@gmail.com

IN COLLABORATION WITH:
Urbe Developments
AND
CALIBER CONTRACTING

REV	DATE	REVISION DETAILS

THIS DRAWING AND ALL INFORMATION HEREIN IS THE EXCLUSIVE PROPERTY OF JAC'DESIGN INC. ANY REUSE OR REPRODUCTION OF THIS DRAWING WITHOUT THE EXPRESS WRITTEN CONSENT OF BOTH PARTIES AND MUST BE RETURNED UPON REQUEST.

URBE DEVELOPMENTS
TOWNHOUSE COMPLEX (GUELPH AVE)
UNIT 2 and 3

PROJECT

DRAWN BY: JC
APPROVED BY: DW
DATE: 09 Mar 2020
SCALE: full
CAD FILE: 200502.dwg
SHEET **F2** of



1 FRONT ELEVATION
EL 1
SCALE: 3/16"=1'



2 RIGHT SIDE ELEVATION
EL 1
SCALE: 3/16"=1'

Jac'design Inc.
692 Centre Road
Flamborough, Ontario
Canada, L8N 2Z7
(416) 993-1509
jacdesigninc@gmail.com

IN COLLABORATION WITH:

Urbe Developments
AND
CALIBER CONTRACTING

REV	DATE	REVISION DETAILS

THIS DRAWING AND ALL INFORMATION HEREIN IS THE EXCLUSIVE PROPERTY OF JAC'DESIGN INC. ANY REVISIONS OR CHANGES MUST BE APPROVED BY JAC'DESIGN INC. AND MUST BE RETURNED UPON REQUEST. THE EXPRESS WRITTEN CONSENT OF BOTH PARTIES AND MUST BE RETURNED UPON REQUEST.

URBE DEVELOPMENTS
PROJECT
TOWNHOUSE COMPLEX (GUELPH AVE)
END UNITS 1 and 2

DRAWN BY: JC
APPROVED BY: DW
DATE: 09 Mar 2020
SCALE: full
CAD FILE: 200502.dwg
SHEET **EL 1** of



1 REAR ELEVATION
 EL2 SCALE: 3/16"=1'



2 LEFT SIDE ELEVATION
 EL2 SCALE: 3/16"=1'

Jac'design Inc.
 692 Centre Road
 Flamborough, Ontario
 Canada, L8N 2Z7
 (416) 993-1509
 jacdesigninc@gmail.com

IN COLLABORATION WITH:

Urbe Developments
 AND
CALIBER CONTRACTING

REV	DATE	REVISION DETAILS

THIS DRAWING AND ALL INFORMATION HEREIN IS THE EXCLUSIVE PROPERTY OF JAC'DESIGN INC. ANY REUSE OR REPRODUCTION OF THIS DRAWING WITHOUT THE EXPRESS WRITTEN CONSENT OF BOTH PARTIES AND MUST BE RETURNED UPON REQUEST.

PROJECT
URBE DEVELOPMENTS
 TOWNHOUSE COMPLEX (GUELPH AVE)
 END UNITS 1 and 2

DRAWN BY: JC
 APPROVED BY: DW
 DATE: 09 Mar 2020
 SCALE: full
 CAD FILE: 200502.dwg
 SHEET **EL2** of