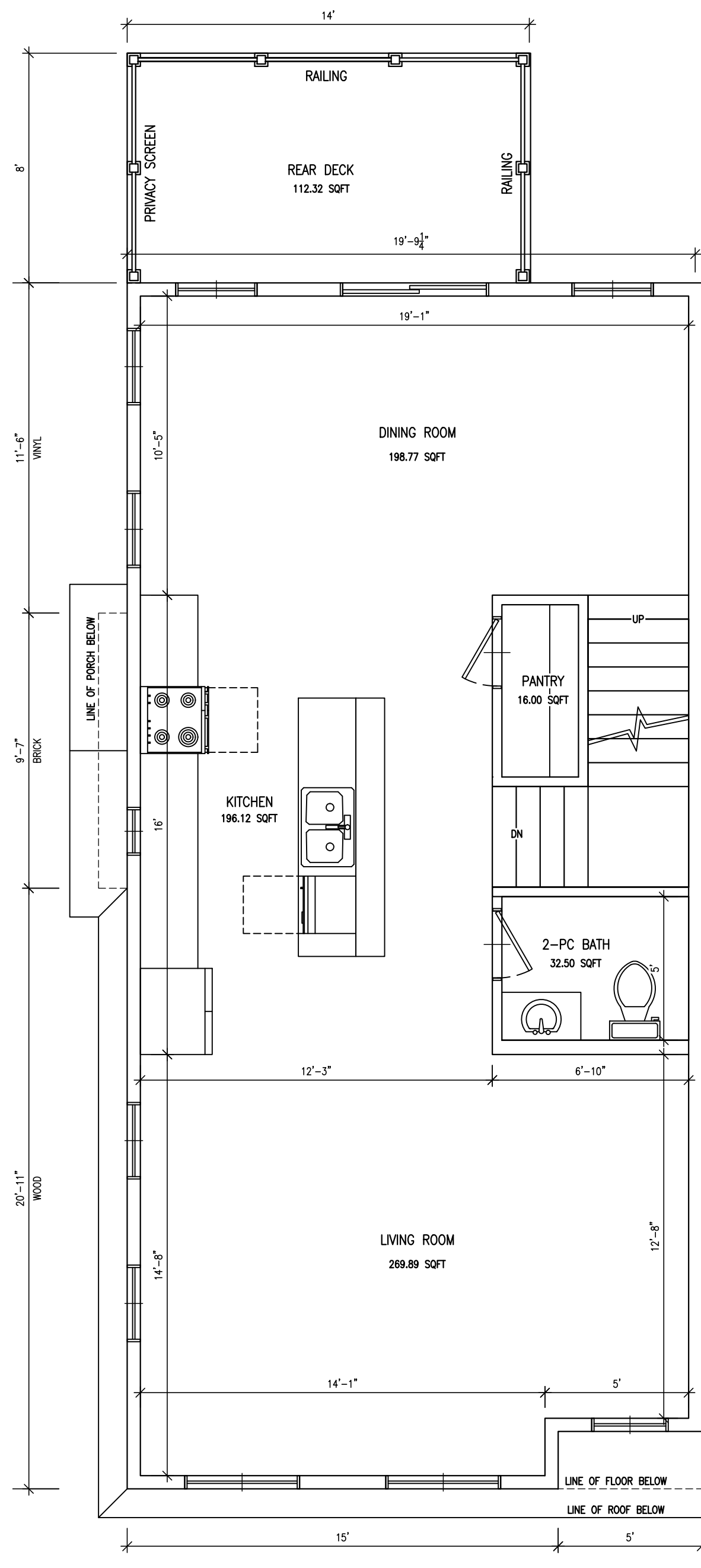
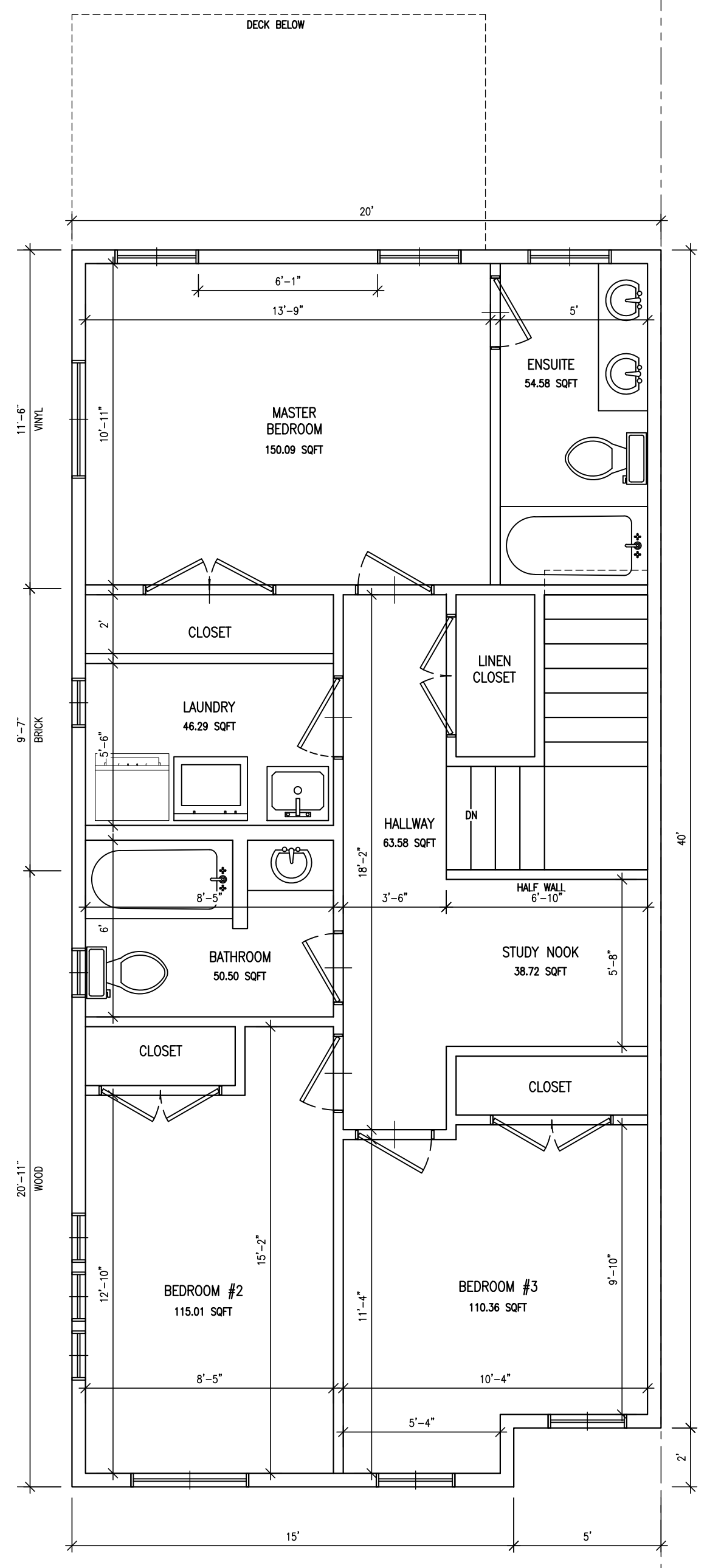


1 MAIN FLOOR - END UNIT / LOT #5
SCALE: 1/4"=1'



2 SECOND FLOOR - END UNIT / LOT #5
SCALE: 1/4"=1'



3 THIRD FLOOR - OPT # 1 - END UNIT / LOT #5
SCALE: 1/4"=1'

Jac'design Inc.
692 Centre Road
Flamborough, Ontario
Canada, L8N 2Z7
(416) 993-1509
jacdesigninc@gmail.com

IN COLLABORATION WITH:

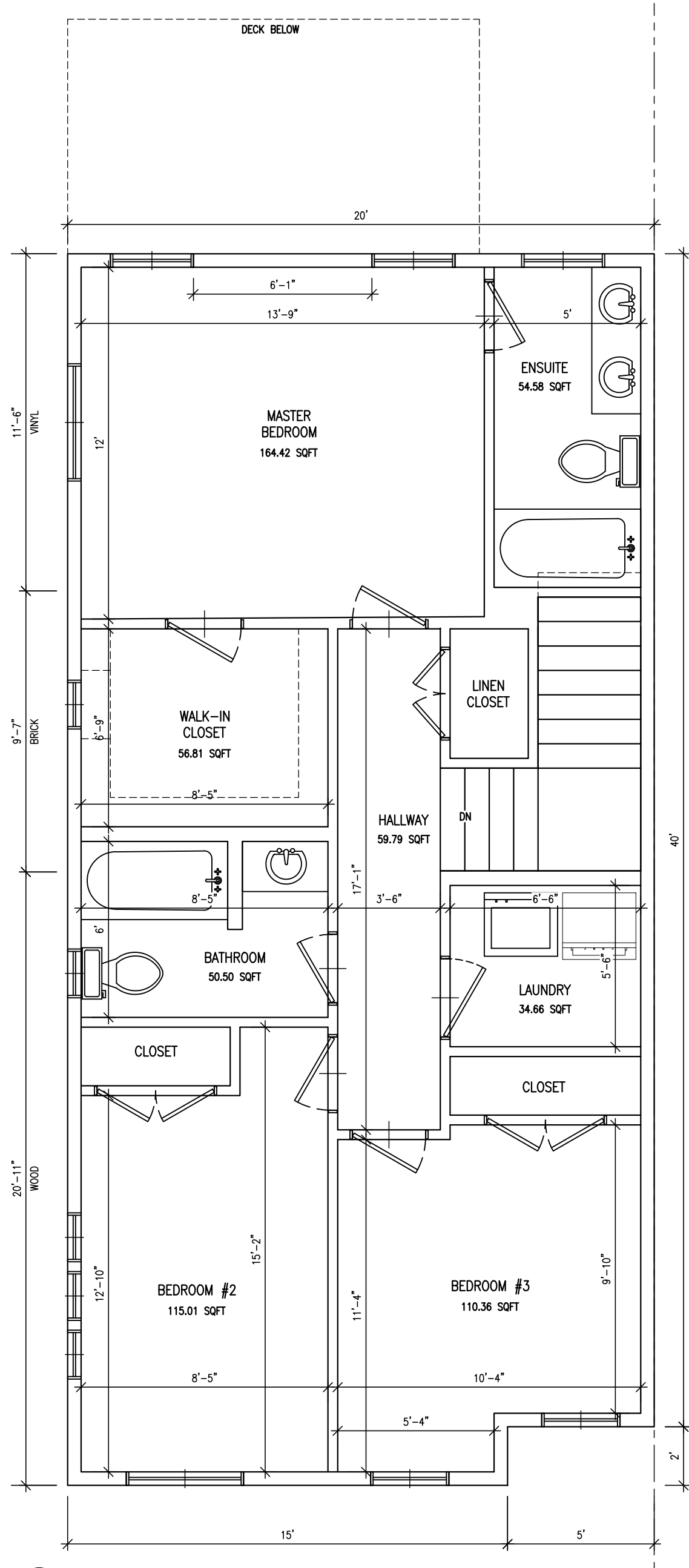
Urbe Developments
AND
CALIBER CONTRACTING

REV	DATE	DESCRIPTION

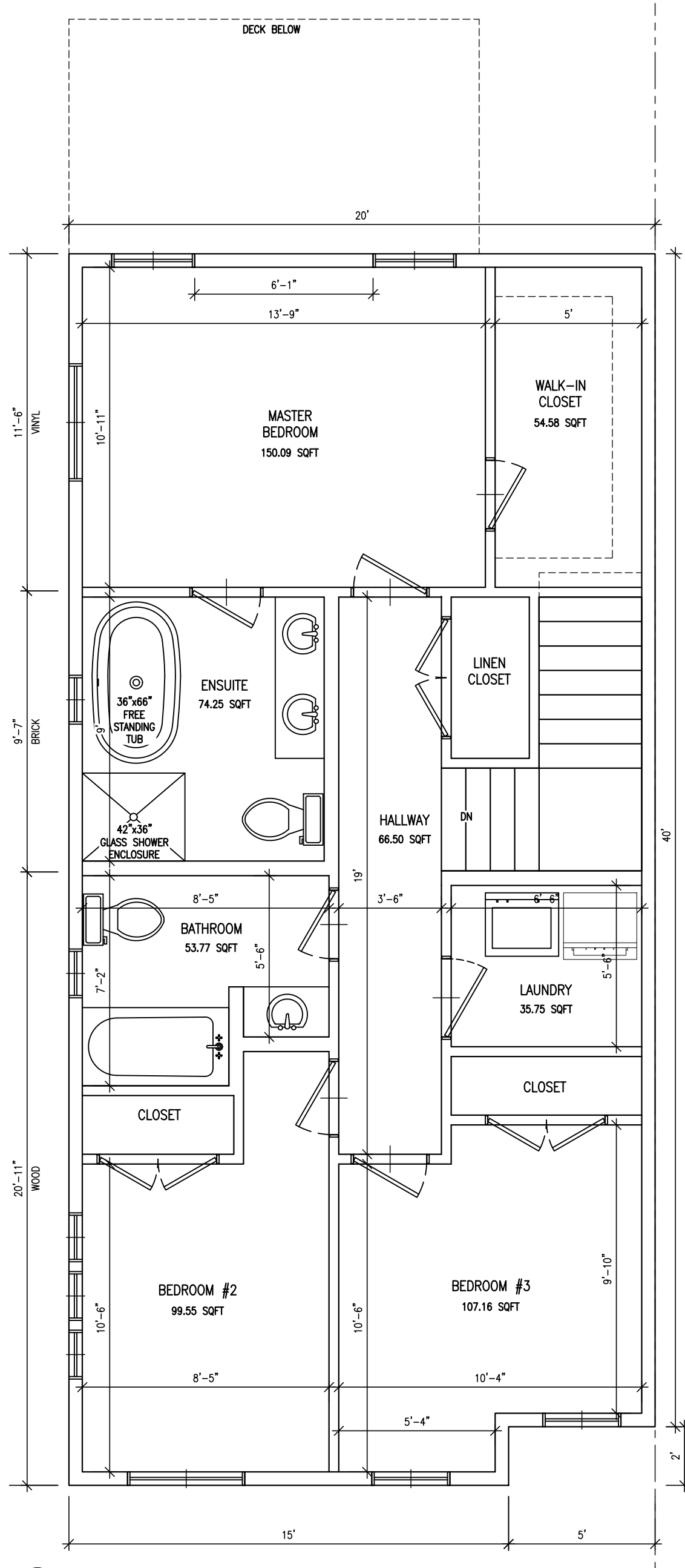
THIS DRAWING AND ALL INFORMATION HEREIN IS THE EXCLUSIVE PROPERTY OF JAC'DESIGN INC. ANY REVISIONS OR CHANGES MUST BE APPROVED BY JAC'DESIGN INC. IN WRITING. THE EXPRESS WRITTEN CONSENT OF BOTH PARTIES AND MUST BE RETURNED UPON REQUEST.

PROJECT: **URBE DEVELOPMENTS**
PROJECT: **TOWNHOUSE COMPLEX (FLETCHER CIR)**
UNIT 5

DRAWN BY: JC
APPROVED BY: DW
DATE: SEP 2020
SCALE: full
CAD FILE: 200502.dwg
SHEET **F1** of



1 THIRD FLOOR - OPT #2 - END UNIT / LOT #5
 F2 SCALE: 1/4"=1'



2 THIRD FLOOR - OPT #3 - END UNIT / LOT #5
 F2 SCALE: 1/4"=1'

Jac'design Inc.

692 Centre Road
 Flamborough, Ontario
 Canada, L8N 2Z7
 (416) 993-1509
 jacdesigninc@gmail.com

IN COLLABORATION WITH:



Urbe Developments

AND

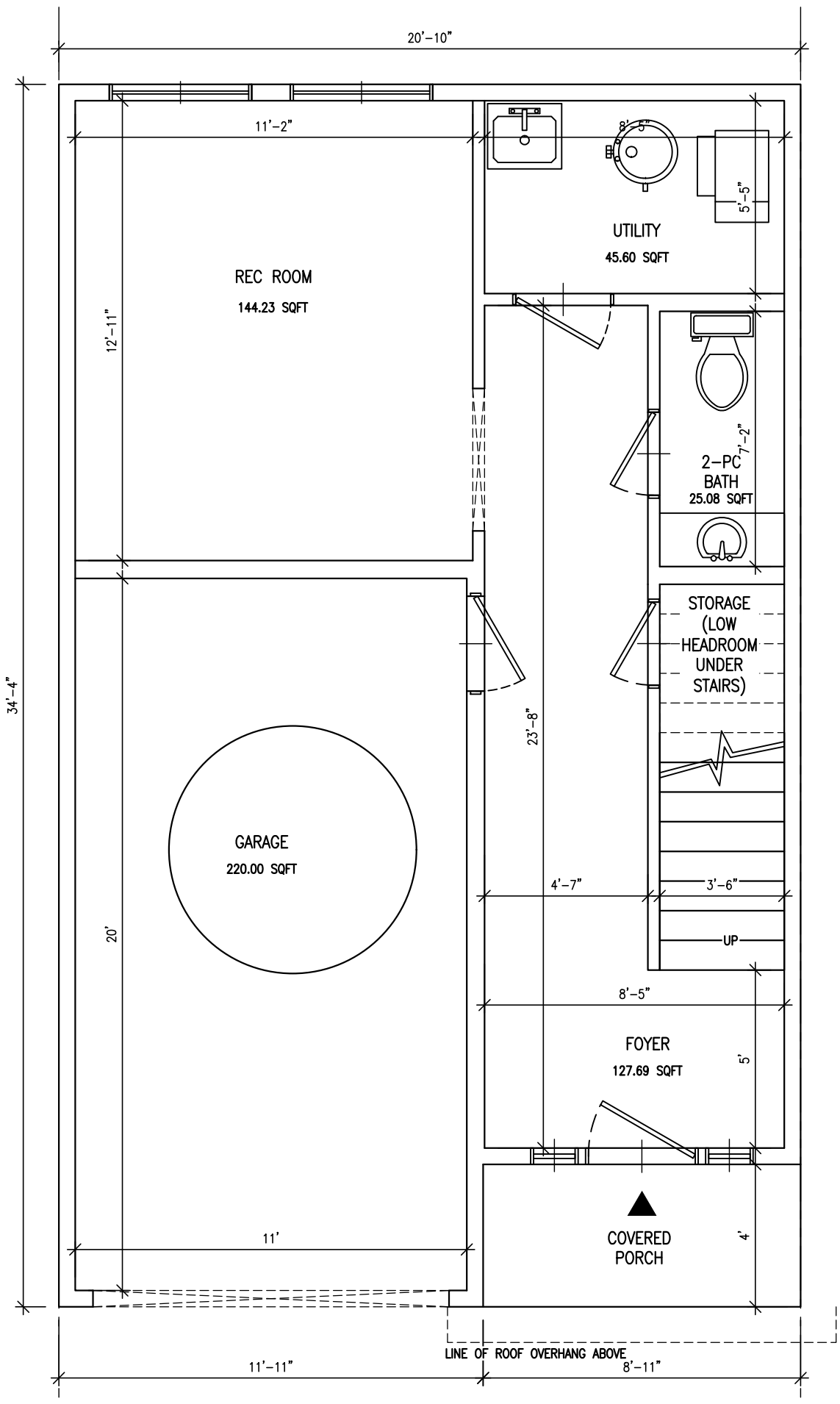
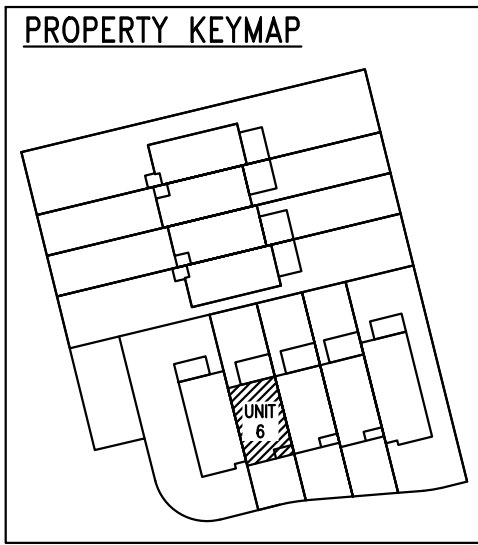


REVISION	DETAILS
DATE	
REV	

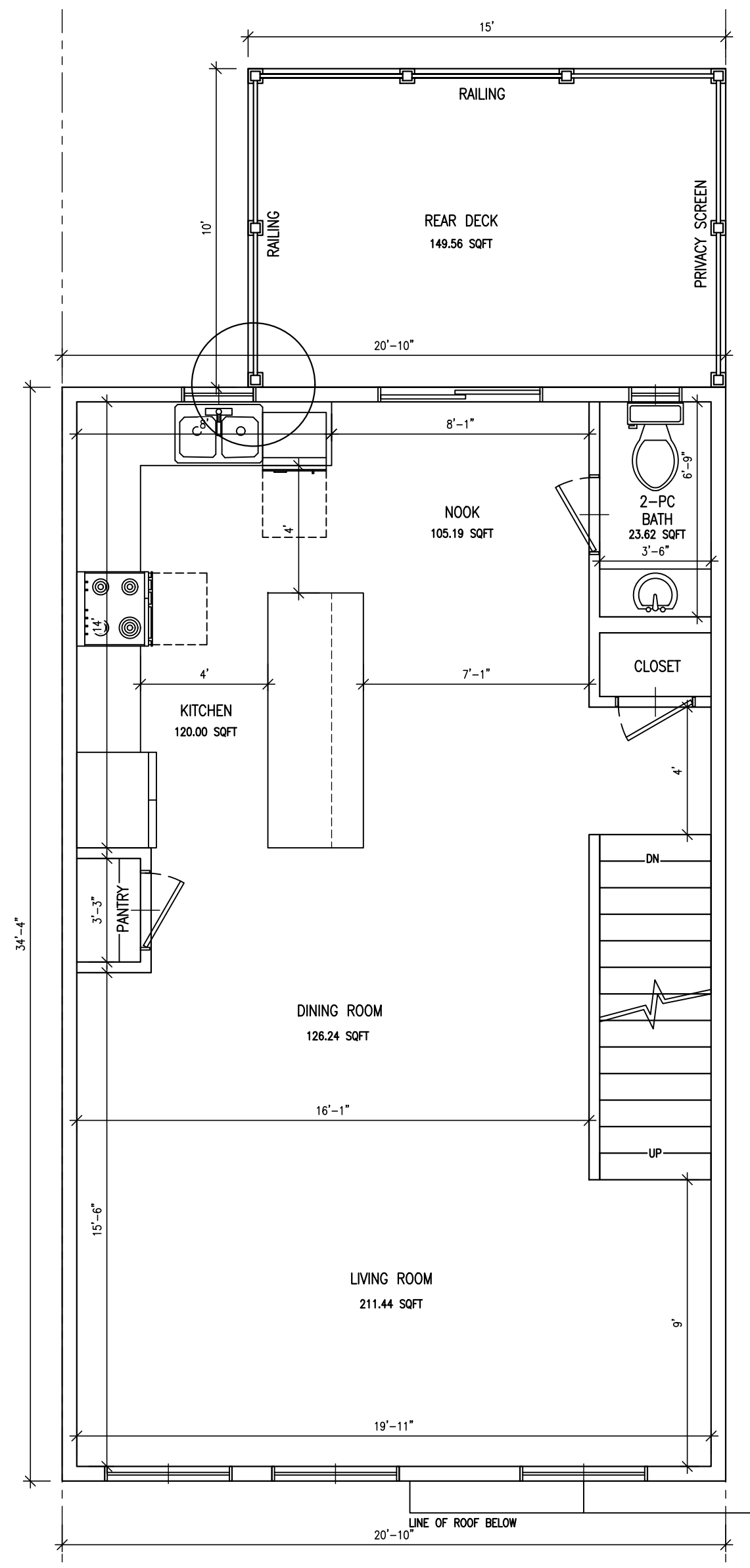
THIS DRAWING AND ALL INFORMATION HEREIN IS THE EXCLUSIVE PROPERTY OF JAC'DESIGN INC. ANY REVISIONS OR CHANGES MUST BE APPROVED BY JAC'DESIGN INC. IN WRITING. THE EXPRESS WRITTEN CONSENT OF BOTH PARTIES AND MUST BE RETURNED UPON REQUEST.

PROJECT	URBE DEVELOPMENTS
PROJECT	TOWNHOUSE COMPLEX (FLETCHER CIR)
	UNIT 5

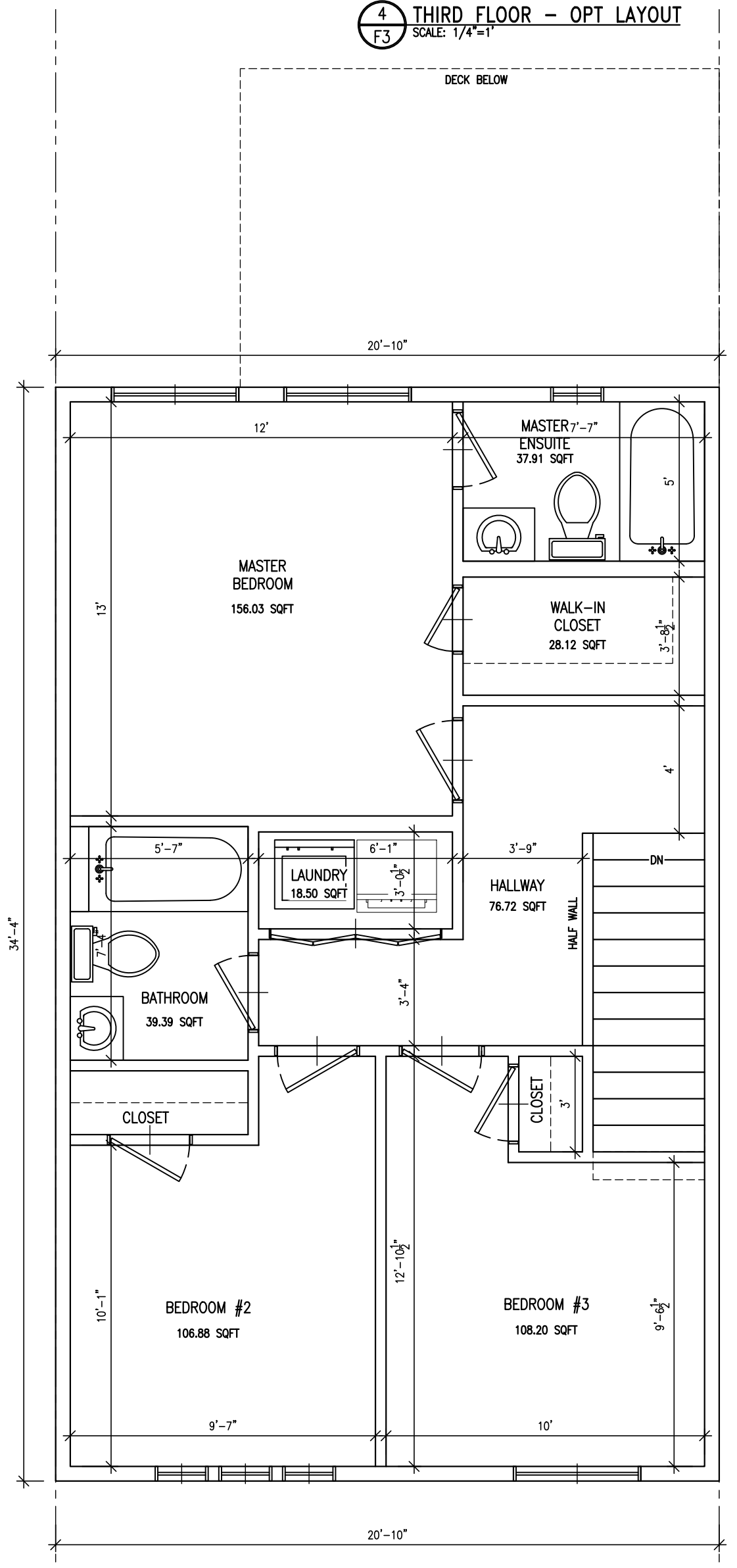
DRAWN BY:	JC
APPROVED BY:	DW
DATE:	SEP 2020
SCALE:	full
CAD FILE:	200502.dwg
SHEET	F2 of



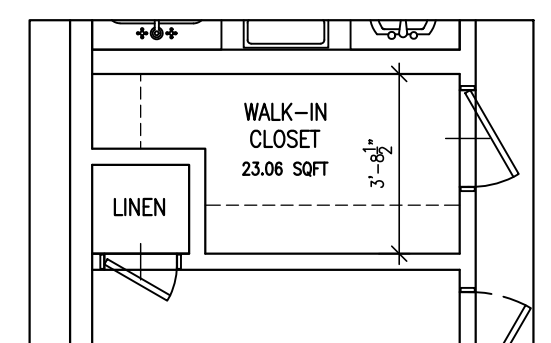
1 MAIN FLOOR - INTERIOR UNIT / LOT #6
SCALE: 1/4"=1'



2 SECOND FLOOR - INTERIOR UNIT / LOT #6
SCALE: 1/4"=1'



3 THIRD FLOOR - INTERIOR UNIT / LOT #6
SCALE: 1/4"=1'



4 THIRD FLOOR - OPT LAYOUT
SCALE: 1/4"=1'

Jac'design Inc.
692 Centre Road
Flamborough, Ontario
Canada, L8N 2Z7
(416) 993-1509
jacdesigninc@gmail.com

IN COLLABORATION WITH:

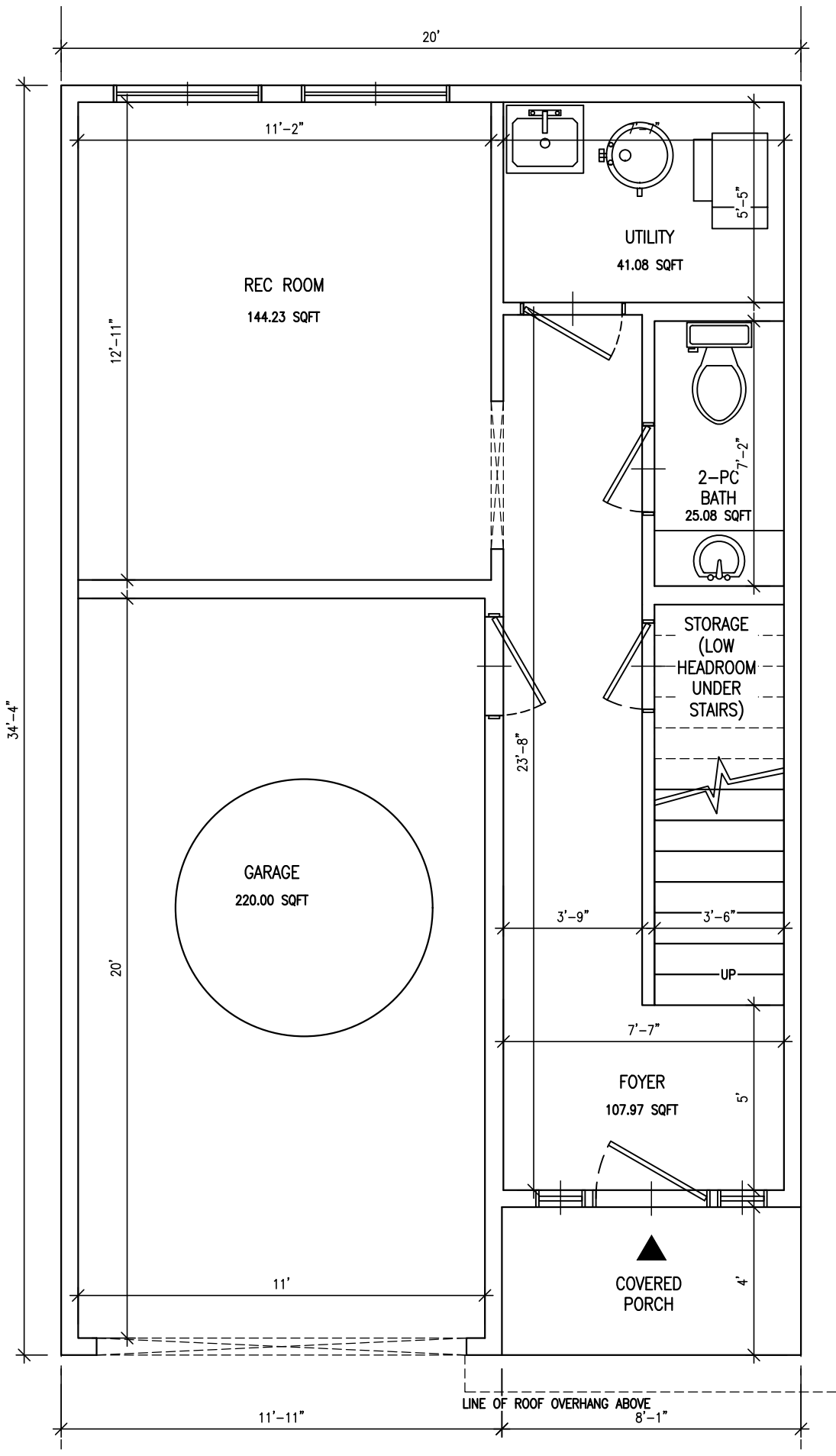
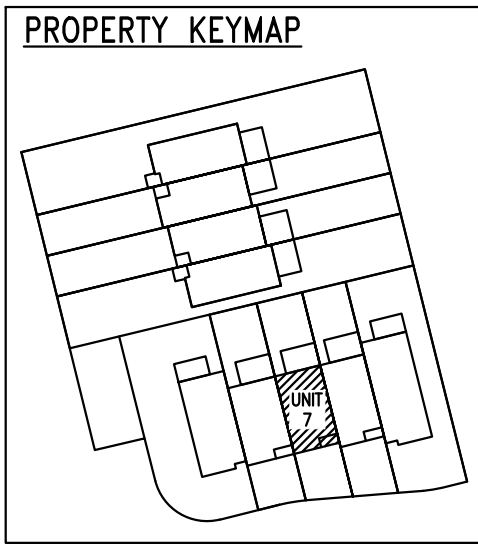
Urbe Developments
AND
CALIBER CONTRACTING

REV	DATE	REVISION DETAILS

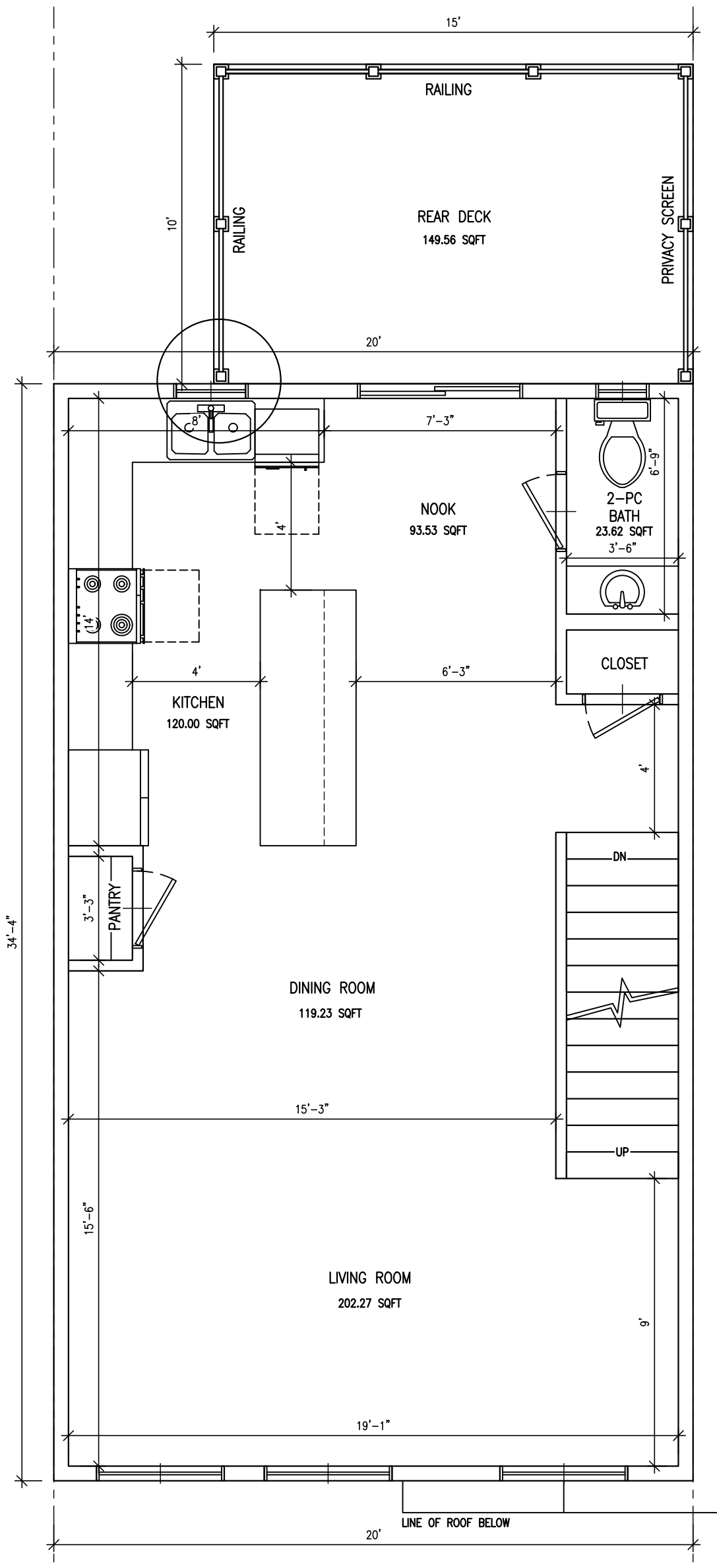
THIS DRAWING AND ALL INFORMATION HEREIN IS THE EXCLUSIVE PROPERTY OF JAC'DESIGN INC. ANY REVISIONS OR CHANGES MUST BE APPROVED BY JAC'DESIGN INC. AND MUST BE RETURNED UPON REQUEST.

PROJECT: **URBE DEVELOPMENTS**
PROJECT: **TOWNHOUSE COMPLEX (FLETCHER CIR)**
UNIT 6

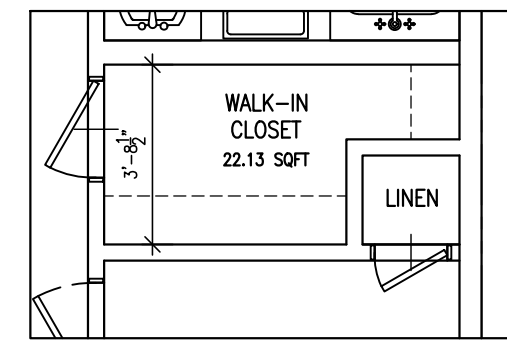
DRAWN BY:	JC
APPROVED BY:	DW
DATE:	SEP 2020
SCALE:	full
CAD FILE:	200502.dwg
SHEET	F3 of



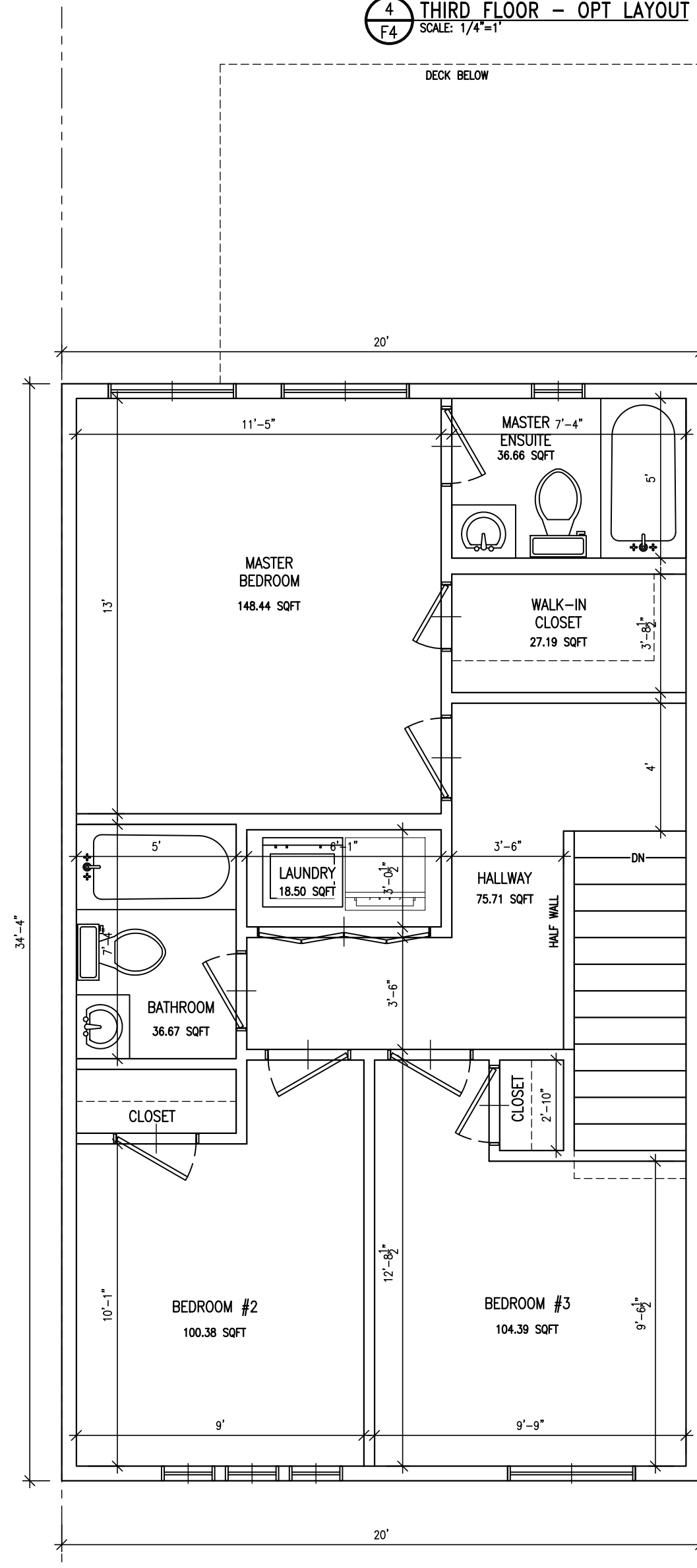
1 MAIN FLOOR - INTERIOR UNIT / LOT #7
SCALE: 1/4"=1'



2 SECOND FLOOR - INTERIOR UNIT / LOT #7
SCALE: 1/4"=1'



4 THIRD FLOOR - OPT LAYOUT
SCALE: 1/4"=1'



3 THIRD FLOOR - INTERIOR UNIT / LOT #7
SCALE: 1/4"=1'

Jac'design Inc.
692 Centre Road
Flamborough, Ontario
Canada, L8N 2Z7
(416) 993-1509
jacdesigninc@gmail.com

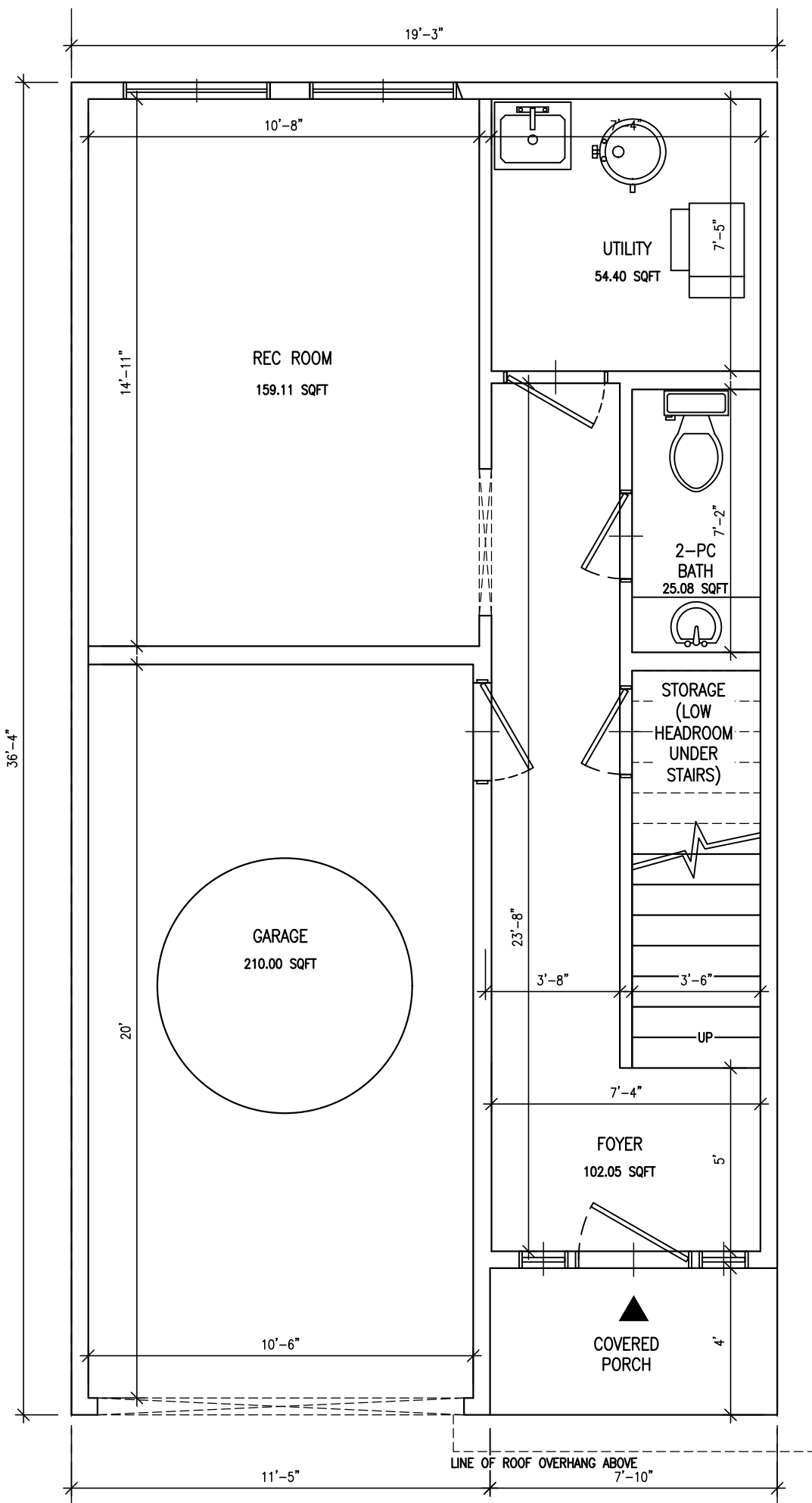
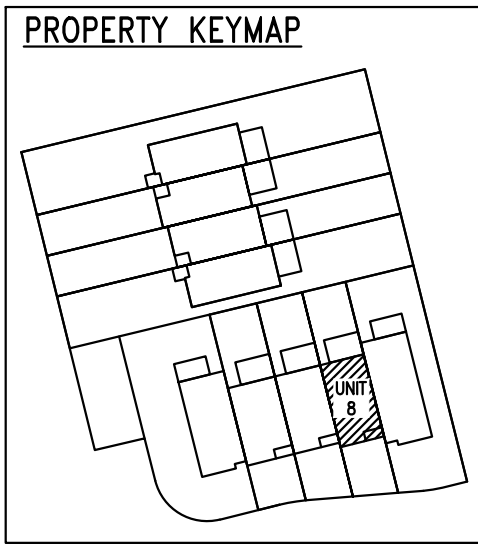
IN COLLABORATION WITH:

Urbe Developments
AND
CALIBER CONTRACTING

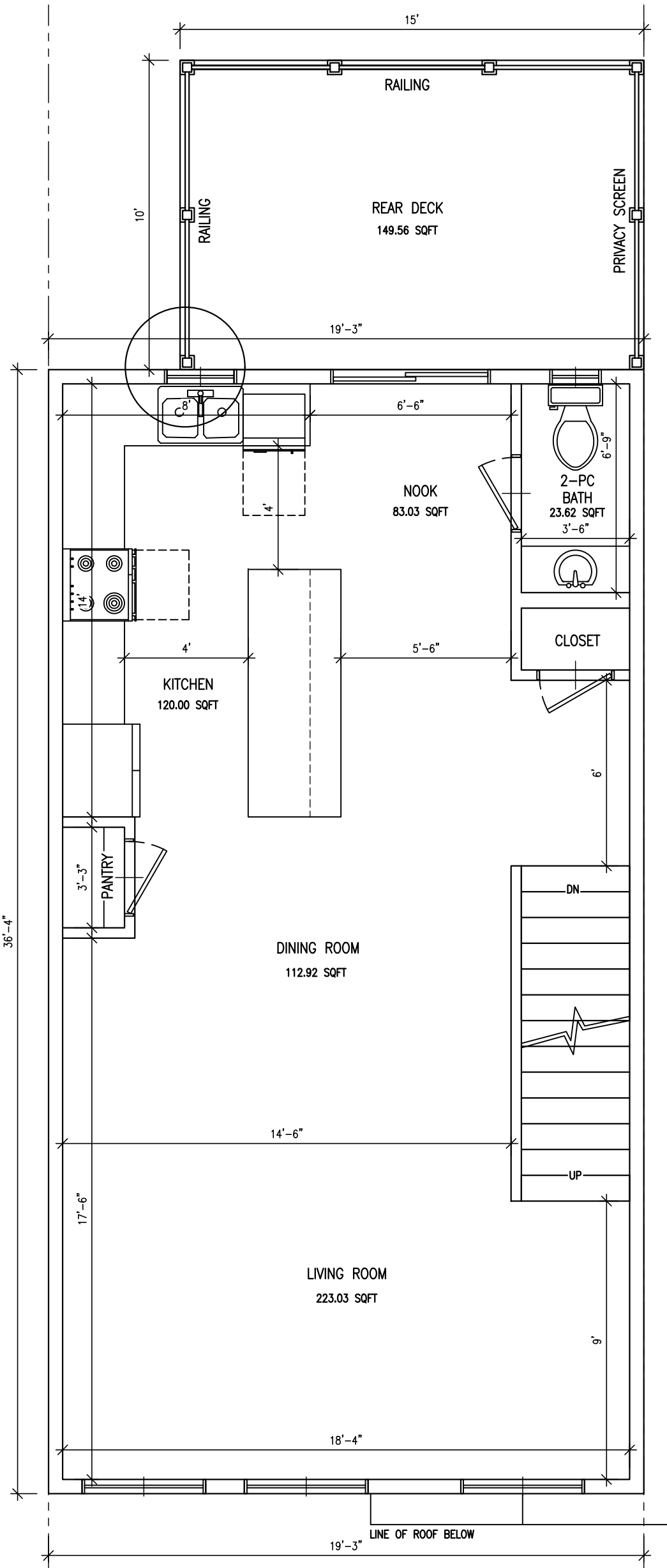
REVISION DETAILS	THIS DRAWING AND ALL INFORMATION HEREIN IS THE EXCLUSIVE PROPERTY OF JAC'DESIGN INC. ANY REVISIONS OR CHANGES MUST BE APPROVED BY JAC'DESIGN INC. IN WRITING. THE EXPRESS WRITTEN CONSENT OF BOTH PARTIES AND MUST BE RETURNED UPON REQUEST.
DATE	
REV	

PROJECT
URBE DEVELOPMENTS
TOWNHOUSE COMPLEX (FLETCHER CIR)
UNIT 7

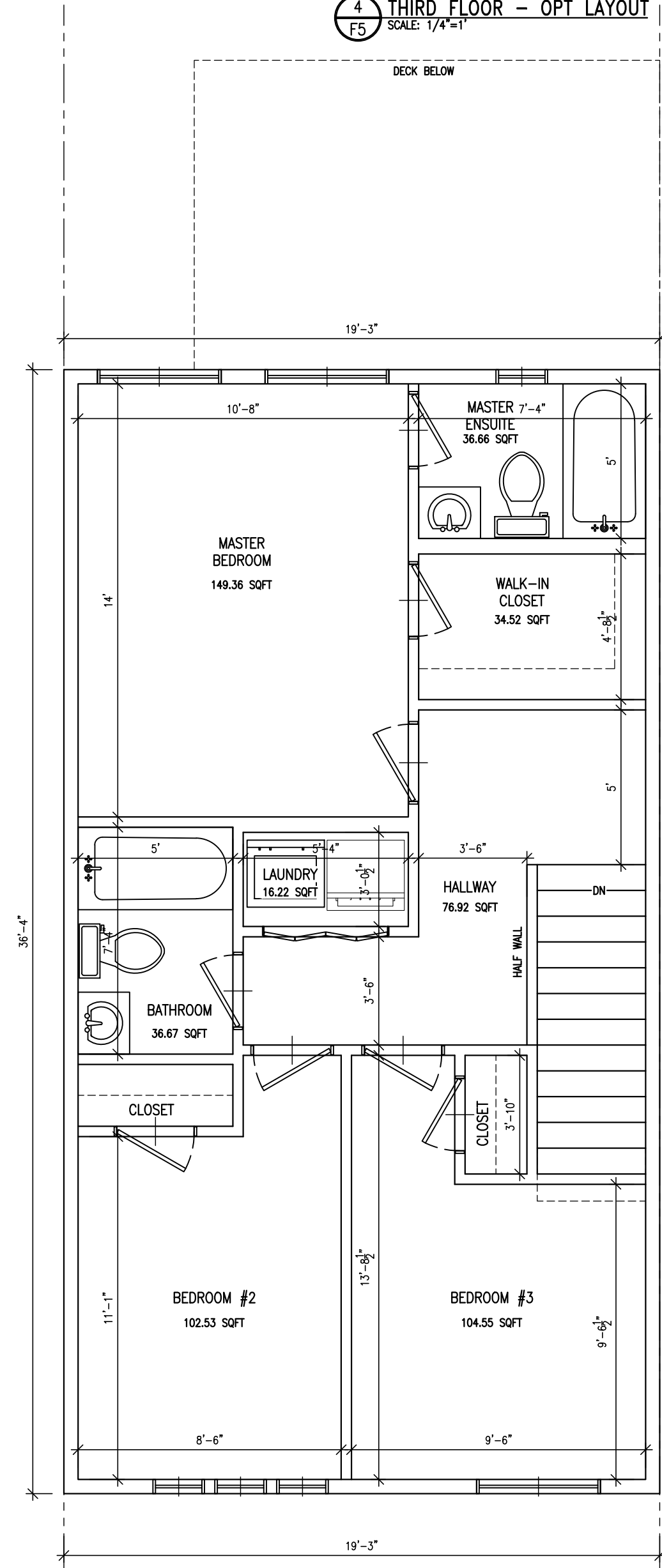
DRAWN BY:	JC
APPROVED BY:	DW
DATE:	SEP 2020
SCALE:	full
CAD FILE:	200502.dwg
SHEET	F4 of



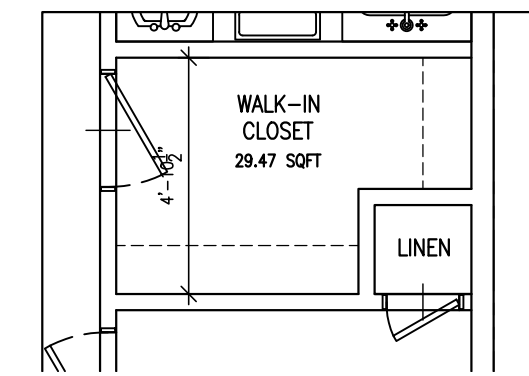
1 MAIN FLOOR - INTERIOR UNIT / LOT #8
F5 SCALE: 1/4"=1'



2 SECOND FLOOR - INTERIOR UNIT / LOT #8
F5 SCALE: 1/4"=1'



3 THIRD FLOOR - INTERIOR UNIT / LOT #8
F5 SCALE: 1/4"=1'



4 THIRD FLOOR - OPT LAYOUT
F5 SCALE: 1/4"=1'

Jac'design Inc.
692 Centre Road
Flamborough, Ontario
Canada, L8N 2Z7
(416) 993-1509
jacdesigninc@gmail.com

IN COLLABORATION WITH:

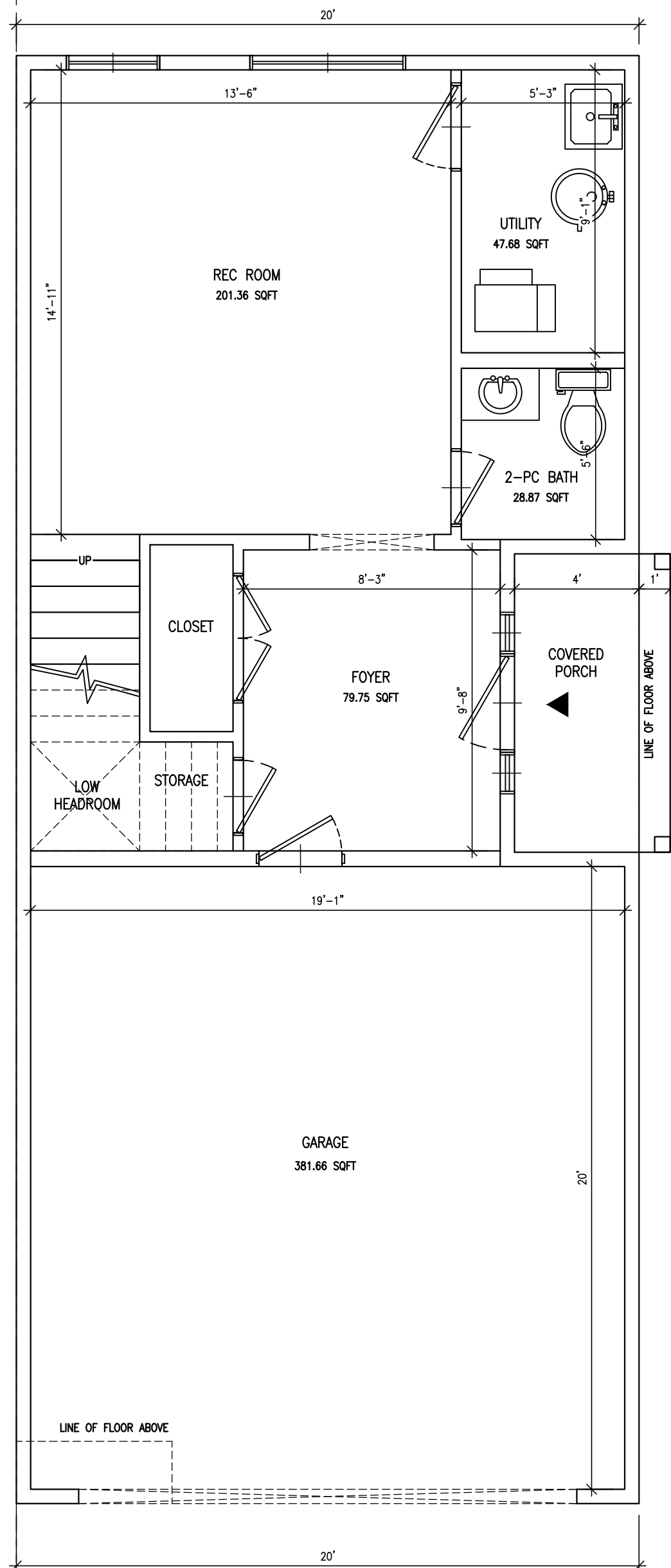
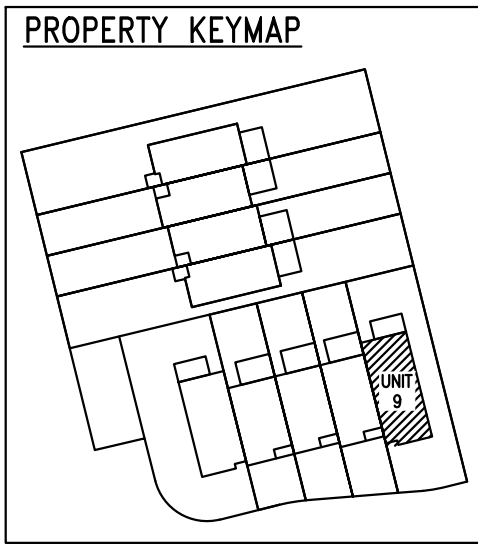
Urbe Developments
AND
CALIBER CONTRACTING

REV	DATE	REVISION DETAILS

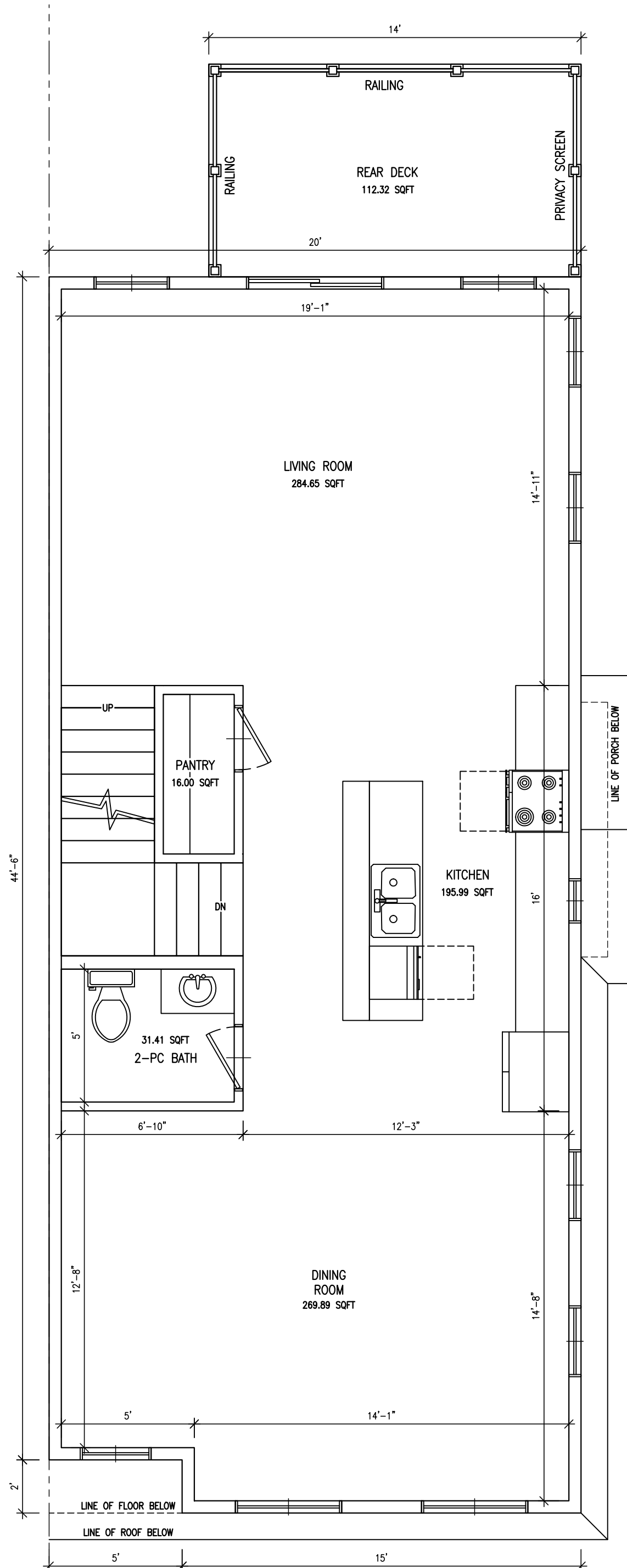
THIS DRAWING AND ALL INFORMATION HEREIN IS THE EXCLUSIVE PROPERTY OF JAC'DESIGN INC. ANY REVISIONS OR CHANGES MUST BE APPROVED BY JAC'DESIGN INC. IN WRITING. THE EXPRESS WRITTEN CONSENT OF BOTH PARTIES AND MUST BE RETURNED UPON REQUEST.

PROJECT
URBE DEVELOPMENTS
TOWNHOUSE COMPLEX (FLETCHER CIR)
UNIT 8

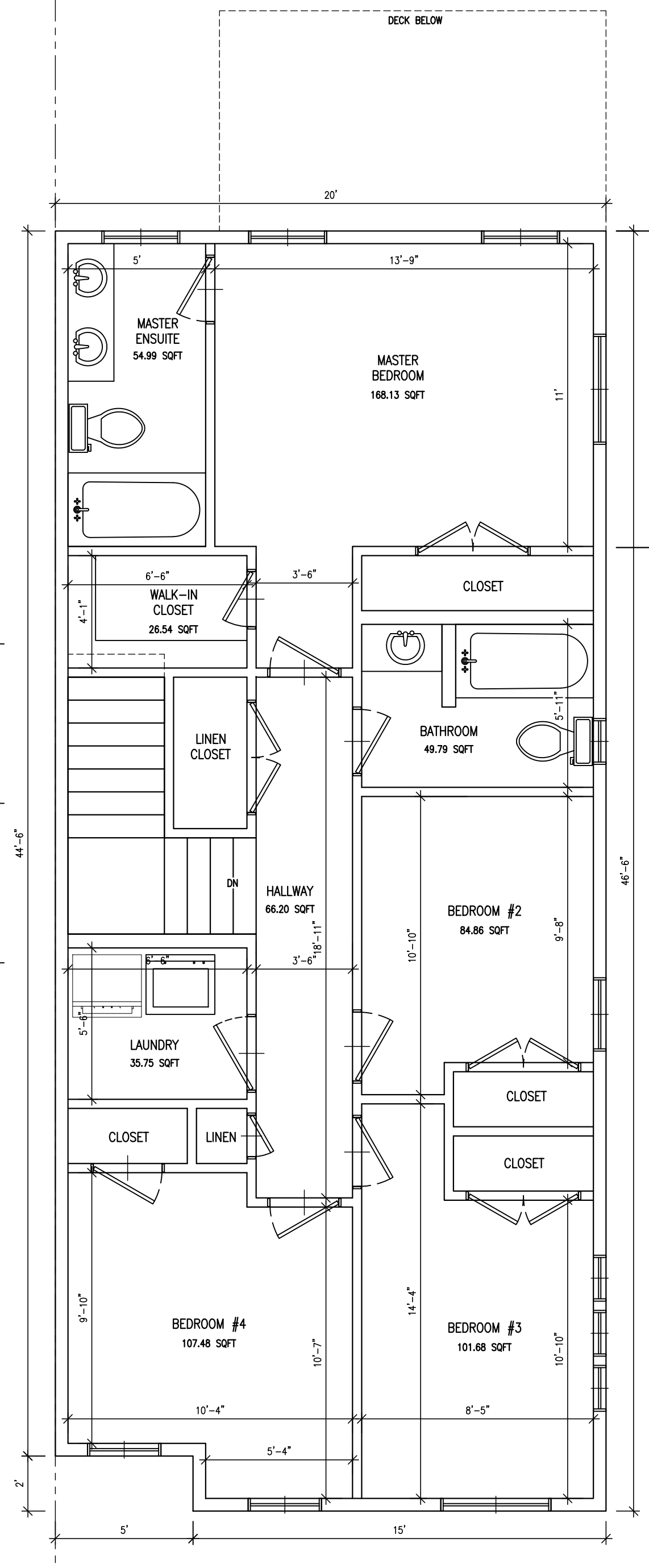
DRAWN BY: JC
APPROVED BY: DW
DATE: SEP 2020
SCALE: full
CAD FILE: 200502.dwg
SHEET **F5** of



1 MAIN FLOOR - END UNIT / LOT #9
SCALE: 1/4"=1'



2 SECOND FLOOR - END UNIT / LOT #9
SCALE: 1/4"=1'



3 THIRD FLOOR - END UNIT / LOT #9
SCALE: 1/4"=1'

Jac'design Inc.
692 Centre Road
Flamborough, Ontario
Canada, L8N 2Z7
(416) 993-1509
jacdesigninc@gmail.com

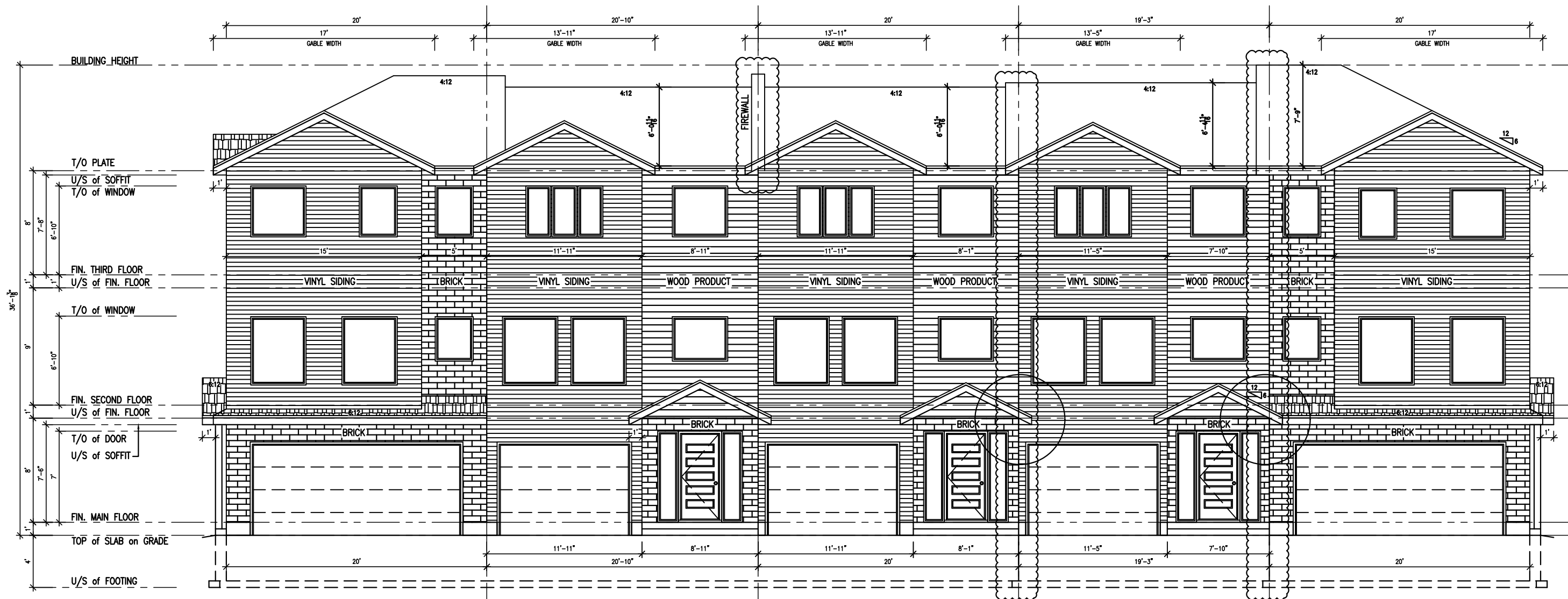
IN COLLABORATION WITH:

Urbe Developments
AND
CALIBER CONTRACTING

REVISION DETAILS	THIS DRAWING AND ALL INFORMATION HEREIN IS THE EXCLUSIVE PROPERTY OF JAC'DESIGN INC. ANY REVISIONS OR CHANGES MUST BE APPROVED BY JAC'DESIGN INC. THE EXPRESS WRITTEN CONSENT OF BOTH PARTIES AND MUST BE RETURNED UPON REQUEST.
DATE	
REV	

PROJECT
URBE DEVELOPMENTS
TOWNHOUSE COMPLEX (FLETCHER CIR)
UNIT 9

DRAWN BY: JC
APPROVED BY: DW
DATE: SEP 2020
SCALE: full
CAD FILE: 200502.dwg
SHEET **F6** of



1 FRONT ELEVATION
SCALE: 1/8"=1'



2 RIGHT SIDE ELEVATION
SCALE: 3/16"=1'

Jac'design Inc.
692 Centre Road
Flamborough, Ontario
Canada, L8N 2Z7
(416) 993-1509
jacdesigninc@gmail.com

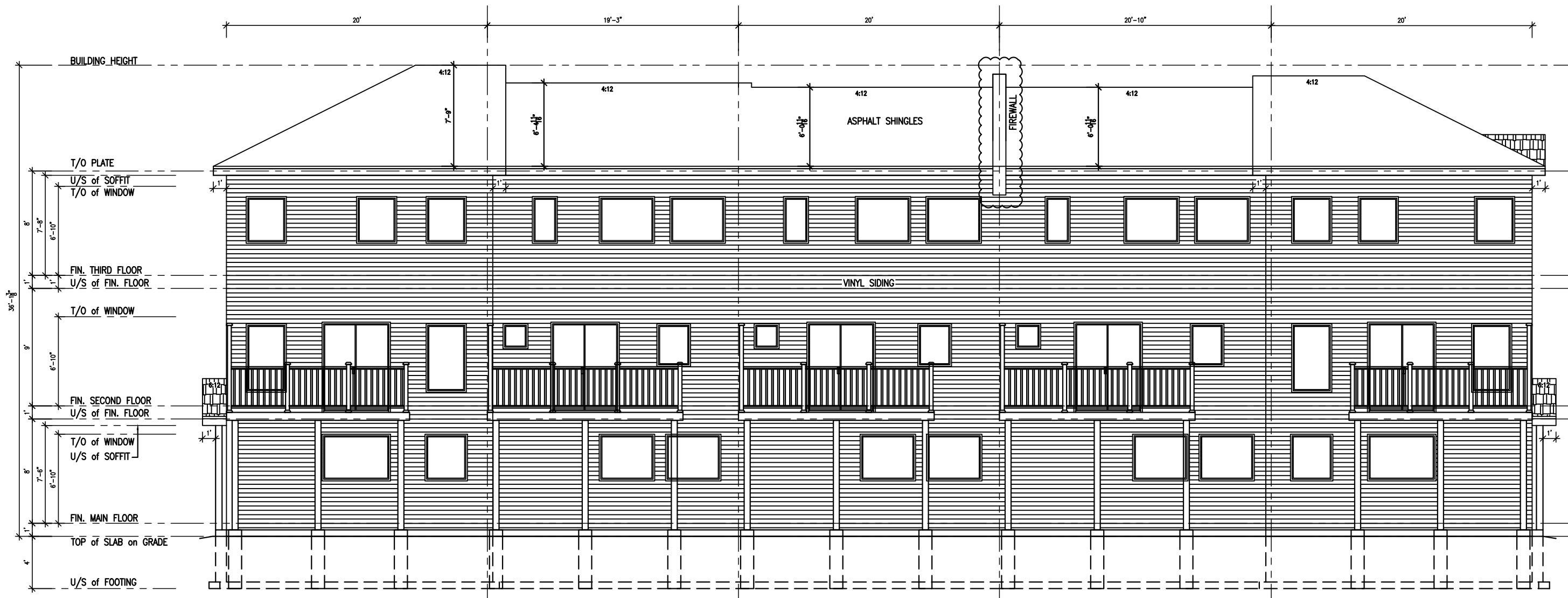
IN COLLABORATION WITH:

 Urbe Developments
AND
CALIBER CONTRACTING

REV	DATE	REVISION DETAILS

THIS DRAWING AND ALL INFORMATION HEREIN IS THE EXCLUSIVE PROPERTY OF JAC'DESIGN INC. ANY REVISIONS OR CHANGES MUST BE APPROVED BY JAC'DESIGN INC. AND MUST BE RETURNED UPON REQUEST. THE EXPRESS WRITTEN CONSENT OF BOTH PARTIES AND MUST BE RETURNED UPON REQUEST.

PROJECT	URBE DEVELOPMENTS
PROJECT	TOWNHOUSE COMPLEX (FLETCHER CIR)
DRAWN BY:	JC
APPROVED BY:	DW
DATE:	09 Mar 2020
SCALE:	full
CAD FILE:	200502.dwg
SHEET	EL1 of



1 REAR ELEVATION
SCALE: 1/8"=1'



2 LEFT SIDE ELEVATION
SCALE: 1/8"=1'

Jac'design Inc.
692 Centre Road
Flamborough, Ontario
Canada, L8N 2Z7
(416) 993-1509
jacdesigninc@gmail.com

IN COLLABORATION WITH:

Urbe Developments
AND
CALIBER CONTRACTING

REV	DATE	REVISION DETAILS

THIS DRAWING AND ALL INFORMATION HEREIN IS THE EXCLUSIVE PROPERTY OF JAC'DESIGN INC. ANY REVISIONS OR CHANGES MUST BE APPROVED BY JAC'DESIGN INC. AND MUST BE RETURNED UPON REQUEST. THE EXPRESS WRITTEN CONSENT OF BOTH PARTIES AND MUST BE RETURNED UPON REQUEST.

PROJECT
URBE DEVELOPMENTS
TOWNHOUSE COMPLEX (FLETCHER CIR)

DRAWN BY: JC
APPROVED BY: DW
DATE: 09 Mar 2020
SCALE: full
CAD FILE: 200502.dwg
SHEET **EL2** of