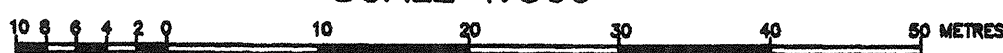
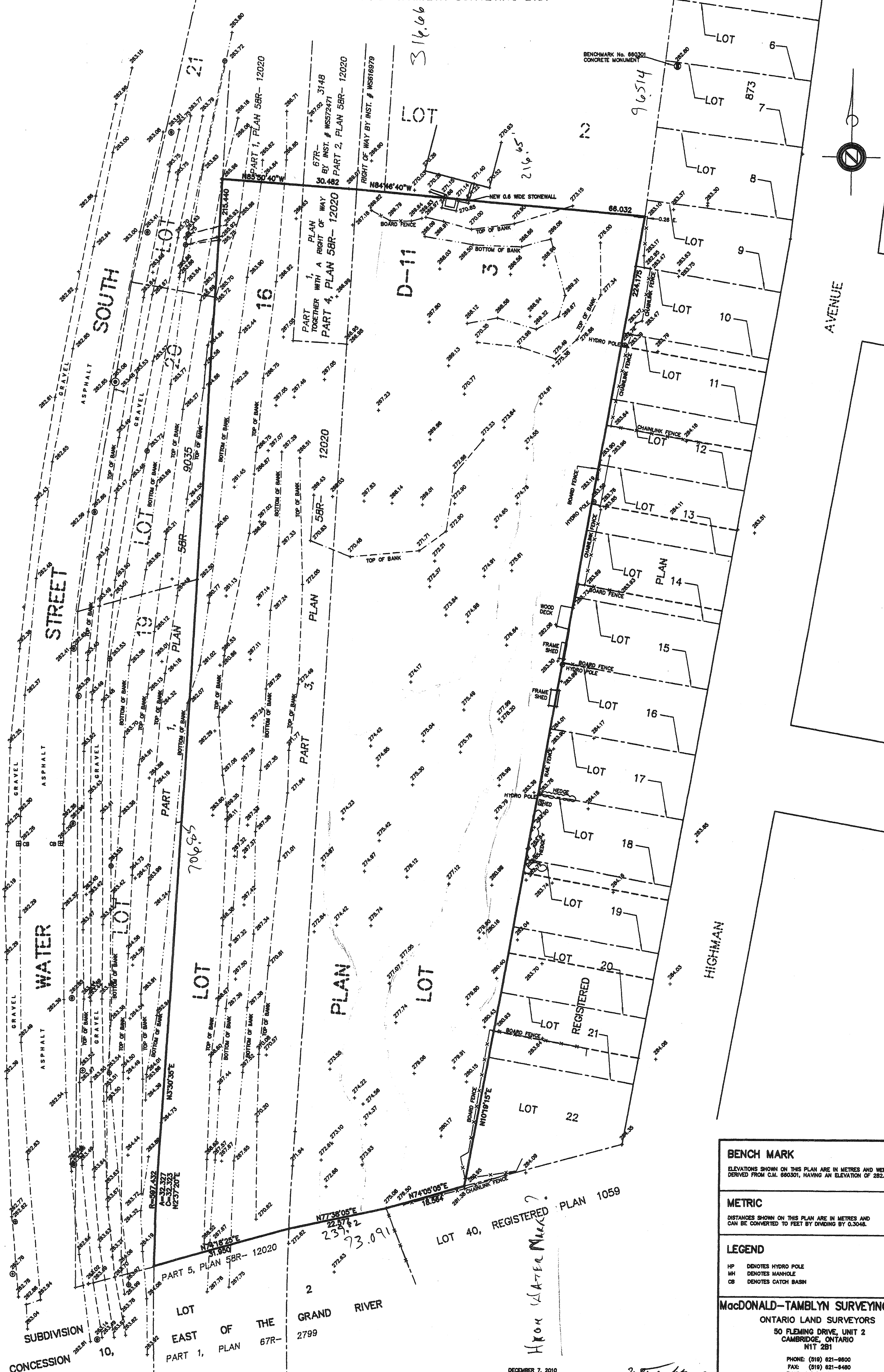


PLAN SHOWING EXISTING ELEVATIONS ON  
 PART OF LOTS 3, 19, 20 AND 21, PLAN D-11  
 (FORMERLY IN THE CITY OF GALT)  
 CITY OF CAMBRIDGE, REGIONAL MUNICIPALITY OF WATERLOO  
 SCALE 1:500



MacDONALD-TAMBLYN SURVEYING LTD.



<b>BENCH MARK</b>
ELEVATIONS SHOWN ON THIS PLAN ARE IN METRES AND WERE DERIVED FROM C.M. 660301, HAVING AN ELEVATION OF 282.800.
<b>METRIC</b>
DISTANCES SHOWN ON THIS PLAN ARE IN METRES AND CAN BE CONVERTED TO FEET BY DIVIDING BY 0.3048.
<b>LEGEND</b>
HP DENOTES HYDRO POLE
MH DENOTES MANHOLE
CB DENOTES CATCH BASIN

**MacDONALD-TAMBLYN SURVEYING LTD.**  
 ONTARIO LAND SURVEYORS  
 50 FLEMING DRIVE, UNIT 2  
 CAMBRIDGE, ONTARIO  
 N1T 2B1  
 PHONE: (519) 821-8600  
 FAX: (519) 821-8480  
 EMAIL: info@mt-survey.ca

DECEMBER 7, 2010  
 DATE

*MacDONALD-TAMBLYN*  
 M.B. TAMBLYN  
 ONTARIO LAND SURVEYOR