



GREEN SCHEELS PIDGEON
PLANNING CONSULTANTS LIMITED

COMMUNITY PLANNING
LAND DEVELOPMENT
URBAN DESIGN

October 27, 2000

Project No.: 0045.90

Gateman Milloy
270 Shoemaker Street
Kitchener, ON
N2E 3E1

Attention: Mr. Mike Milloy

Dear Sir:

Re: Archaeological Assessment
Fountain Street and Old Mill Road, Cambridge

Please find enclosed three copies of the Stage 1-2 Archaeological Assessment for the above-noted property. No archaeological resources were found on the site and no additional work is required to be completed.

Three copies of the report have been forwarded to the Ministry of Citizenship, Culture and Recreation for their review and approval. Once we are in receipt of a letter from Ministry accepting the report, we will forward copies to the City of Cambridge, Angelo Innocente and yourself to allow the grading permit to be issued.

It is our understanding that you are required to submit an existing features sheet of a wayside pit application to the Ministry of Citizenship, Culture and Recreation. This will ensure that the finalized limits of the wayside pit application are within the area that has been examined as a part of this archaeological review. The following contact and address should be used in forwarding the existing features sheet to the Ministry:

Ministry of Citizenship, Culture and Recreation
55 Centre Street
London, ON
N6J 1T4

Attention: Dr. Peter Timmins

Telephone: 519 675 7742
Fax: 519 675 7777

Kitchener-Waterloo Office: 201-72 Victoria Street South, Kitchener, Ontario N2G 2A9 T 519 569 8883 F 519 569 8643

Guelph Office: 295 Southgate Drive, P.O. Box 1112, Guelph, Ontario N1H 6N3 T 519 837 8547 F 519 837 1951

www.gsp-planning.com

Finally, I hereby enclose an invoice from Archaeologix Inc. in the amount of \$1,177.00 and respectfully request that you remit payment directly at your earliest convenience.

Yours truly,

**Green Scheels Pidgeon
Planning Consultants**



for Chris Pidgeon, MCIP, RPP

CP:cm

encl.

ARCHAEOLOGIX INC.

14 Oxford Street West, London, Ontario N6H 1P9 • Bus: (519) 642-7836 • Fax: (519) 642-7733 • Cell Phone: (519) 872-5900 • jimarch@netcom.ca



Archaeological Assessment (Stage 1 & 2) Gateman Milloy Subdivision

Part of Lot 6, Beasley's Old Survey
City of Cambridge
R.M. of Waterloo, Ontario



October, 2000

**Archaeological Assessment (Stage 1 & 2)
Gateman Milloy Subdivision**

**Part of Lot 6, Beasley's Old Survey
Formerly Waterloo Township
City of Cambridge, R.M. of Waterloo, Ontario**

Submitted to

Green, Scheels Pidgeon Planning Consultants Ltd.
201-72 Victoria Street South, Kitchener, N2G 2A9
Tel: (519) 569 8883 Fax: (519) 569-8643

and

Ontario Ministry of Citizenship, Culture and Recreation

Prepared by

ARCHAEOLOGIX INC.

14 Oxford Street West, London, Ontario, N6H 1P9
Tel: (519)-642-7836 Fax: (519)-642-7733

Archaeological Licence Number 2000-002

Project Number 2000-061

CIF# 2000-002-100

October, 2000

Table of Contents

<i>Personnel</i>	<i>iii</i>
<i>Acknowledgments</i>	<i>iii</i>
<i>Project Summary</i>	<i>iv</i>
1.0 PURPOSE	1
2.0 STUDY METHODS	1
2.1 Stage 1 Background Research	1
2.2 Stage 2 Field Assessment	3
3.0 RESULTS	3
3.1 Stage 1 Background Research	3
3.1.1 Natural Environment	3
3.1.2 Previously Known Archaeological Resources	3
3.1.4 Potential for Historic Archaeological Sites	5
3.2 Stage 2 Field Assessment	8
4.0 RECOMMENDATIONS	8
References Cited	9
Tables	
1. Registered Archaeological Sites within 1.5 Kilometers	5
2. Cultural Chronology for the Cambridge Area	8
Figures	
1. Location of the Study Area	2
2. A Portion of the 1878 Map of Waterloo Township	4
3. Stage 2 Field Methods and Results	6
4. Ploughed Portion of the Study Area	7
5. Wetland Area, Not Assessed	7

Personnel

Project Coordinator	Jim Wilson, M.A.
Report Production	Jim Wilson, M.A.
Field Director	Brent Wimmer B.Sc.
Field/Office Assistants	Adam Hossack, B.A. Arthur Figura, M.A. David Riddel, M.A. Sherri Smith, B.A. Mr. Kurt Kostuk

Acknowledgments

The completion of this report was facilitated by the assistance of the following individuals:

- **Robert Von Bitter**, Archaeological Data Coordinator, Archaeology Unit, Heritage Branch, Ontario Ministry of Citizenship, Culture and Recreation, Toronto.
- **Neal Ferris**, Heritage Planner, Archaeology Unit, Heritage Branch, Ontario Ministry of Citizenship, Culture and Recreation, London.

Project Summary

An archaeological assessment (Stage 1 & 2) was conducted for a 64 acre development property located on part of Lot 6, Beasely's Old Survey, formerly Waterloo Township, now City of Cambridge. The assessment did not result in the documentation of any archaeological resources, and additional assessment is not recommended.

The Stage 1-2 archaeological assessment was conducted in advance of a standard condition of development. The Ontario Ministry of Citizenship, Culture and Recreation (MCzCR) is asked to review the results and recommendations presented in this report. A formal draft plan will be forwarded to the MCzCR for review at a later date. Until that time a letter of clearance is not requested.

Archaeological Assessment (Stage 1 & 2)
Gateman Milloy Subdivision
Part of Lot 6, Beasley's Old Survey
Formerly Waterloo Township
City of Cambridge, R.M. of Waterloo, Ontario

1.0 PURPOSE

An archaeological assessment (Stage 1 & 2) was conducted for a 64 acre development property located on part of Lot 6, Beasley's Old Survey, formerly Waterloo Township, now City of Cambridge, Ontario.

The Stage 2 assessment was conducted on October 10th & 11th, under archaeological consulting licence 2000-002, issued to Jim Wilson by Jane Marlatt, the assistant deputy minister of Citizenship, Culture and Recreation. The assessment did not result in the documentation of any archaeological resources, and no additional assessment is recommended.

The Stage 1-2 archaeological assessment was conducted in advance of a standard condition of development. The Ontario Ministry of Citizenship, Culture and Recreation (MCzCR) is asked to review the results and recommendations presented in this report. A formal draft plan will be forwarded to the MCzCR for review at a later date. Until that time a letter of clearance is not requested.

2.0 STUDY METHODS

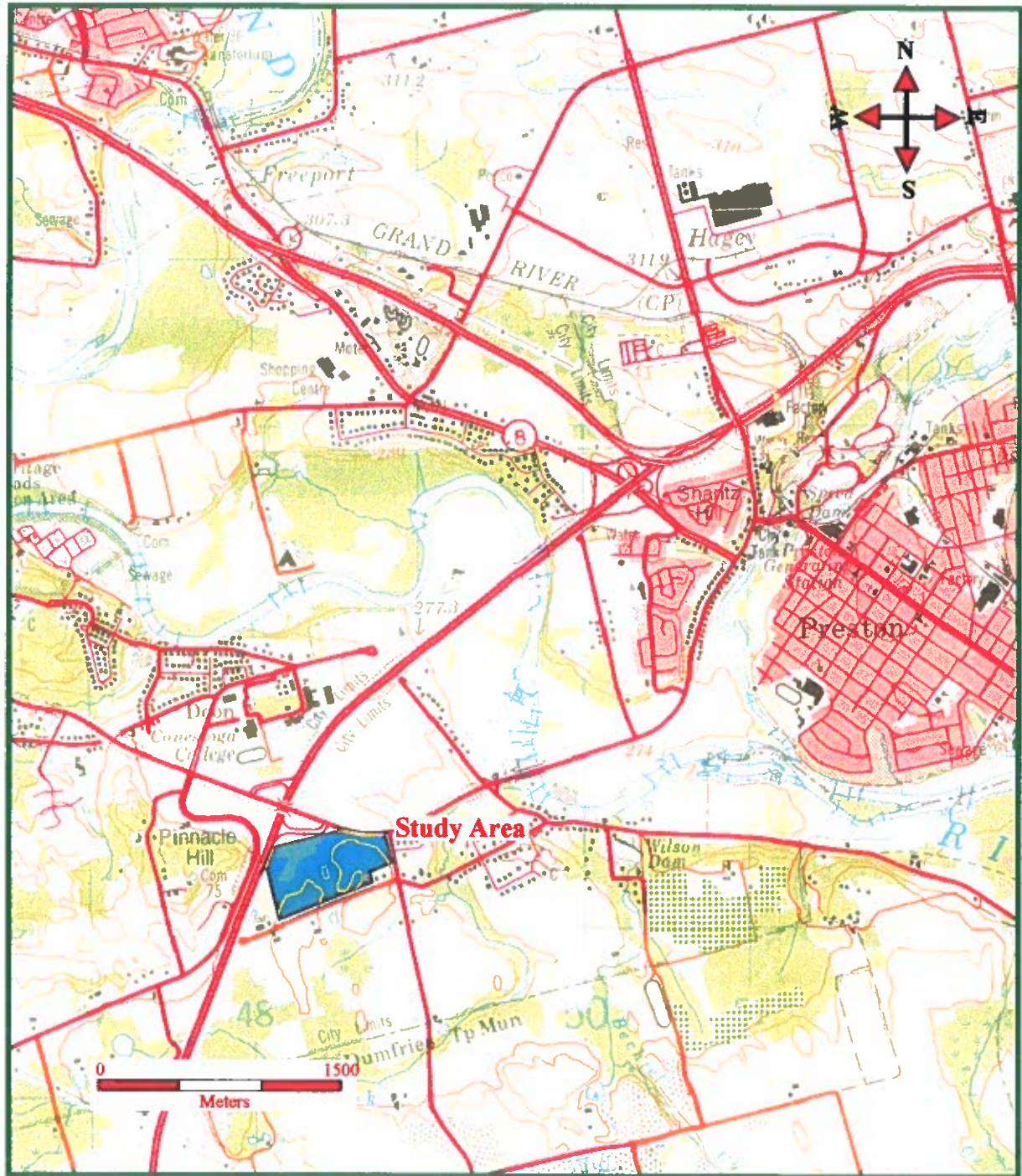
2.1 Stage 1 Background Research

In compliance with the provincial regulations set out in the "*Archaeological Assessment Technical Guidelines*" (MCzCR 1993), the Stage 1 Archaeological Overview/Background Study included;

- a visual evaluation of the property;
- a review of the land use history, including pertinent historic maps; and
- an examination of the National Site Registration Database to determine the presence of known archaeological sites in an around the project area.

Background research was conducted at the Ministry of Citizenship, Culture and Recreation Office (MCzCR) in Toronto, the University of Western Ontario Map Library, the London Public Library and the corporate library of Archaeologix Inc.

Figure 1: Location of the Study Area



2.2 Stage 2 Field Assessment

All portions of the property that could be cultivated had been ploughed and weathered by several heavy rainfalls. Due to the proximity of numerous pre-contact Aboriginal and early Euro-Canadian sites, this portion of the study area was judged to have moderate-to-high archaeological potential, and was assessed using the pedestrian transect method at a five-meter interval. The wetlands and areas of extremely steep slope were judged to have low archaeological potential, and consequently were not subject to assessment. Figure 3 maps the areas assessed and techniques employed.

Permission to enter the study area and to remove artifacts was provided by Mr. Chris Pidgeon, MCIP, acting as the legal representative of the landowner. The weather during the assessment was cool and sunny, and there were no conditions detrimental to the recovery of archaeological remains.

3.0 RESULTS

3.1 Background Research

3.1.1 The Natural Environment

The study area is situated along the extreme southern margin of the Waterloo Hills physiographic region (Chapman and Putnam 1984:136-137).

The Waterloo hills region occupies about 300 square miles or 192,000 acres, lying chiefly in the Regional Municipality of Waterloo...The surface is composed of sandy hills, some of them being ridges of sandy till while others are kames or kame moraines, with outwash sands occupying the intervening hollows....Adjoining the hilly region is an extensive area of alluvial terraces of the Grand River spillway system which, although more nearly horizontal, contains similar but more uniform sandy and gravelly materials....The original forest consisted of splendid pines and hardwoods such as sugar maple, beech, wild cherry, and red oak.

Chapman and Putnam 1984:136

3.1.2 Previously Known Archaeological Resources

Previous research and consulting assessments have demonstrated that the Grand River drainage was intensively utilized by pre-contact Aboriginal peoples. At present there are 35 registered archaeological sites within 1.5 kilometers of the study area. Table 1 provides a summary of these sites while Table 2 provides a general outline of the culture history for the Kitchener/Cambridge area.

Figure 2: A Portion of the 1881 H. Parcell & Co. Map of Waterloo Township

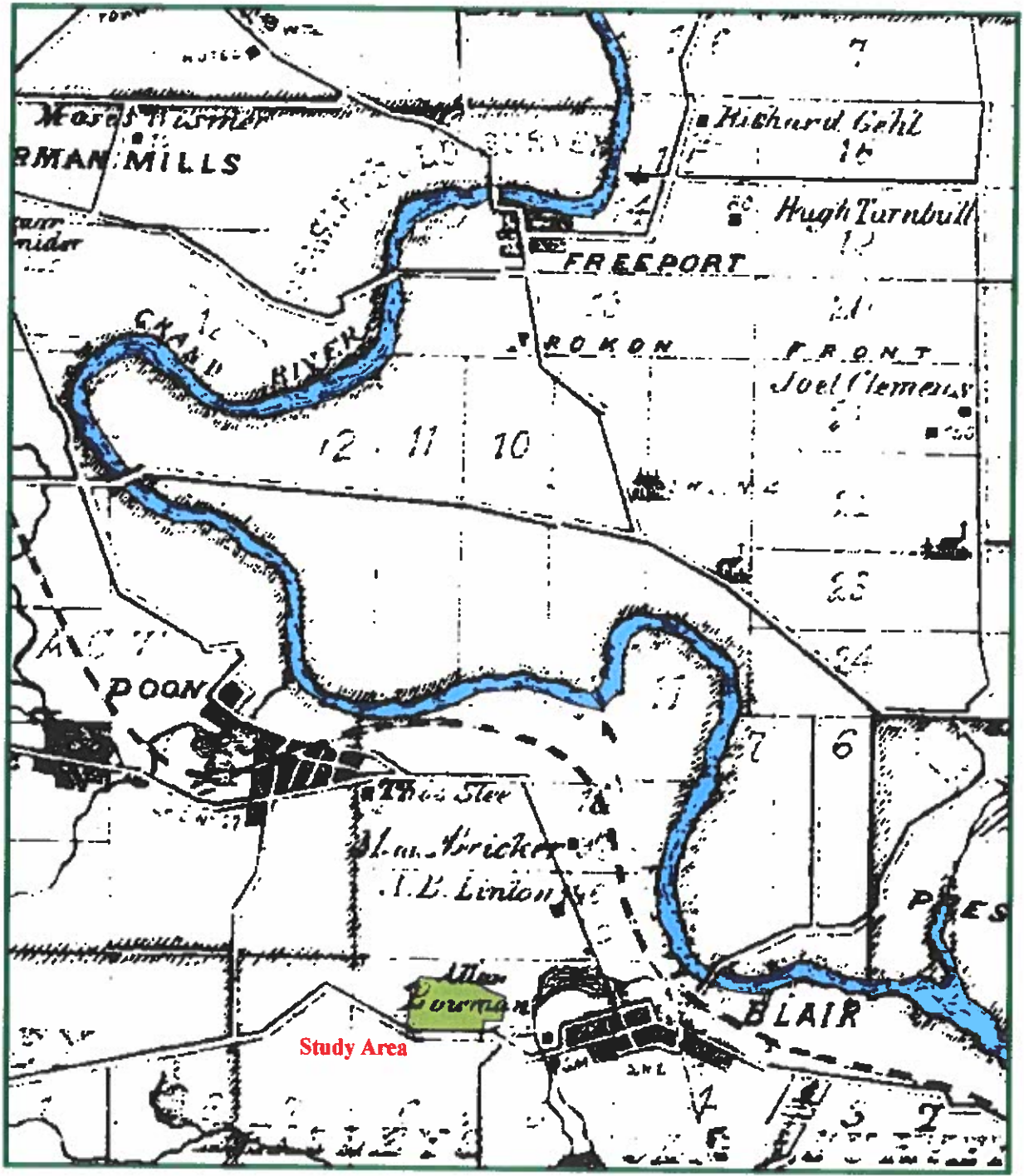


Table 1: Registered Archaeological Sites within 1.5 kilometers of the Study Area.

Borden #	Name	Type	Period	Researcher
AiHc-4	Collector	Camp	Archaic	George MacDonald
AiHc-8	Blair Flats 1	Camp	Princess Point	David Stothers
AiHc-9	Blair Flats 2	Camp	Middle Woodland/Archaic	David Stothers
AiHc-10	Blair Flats 3	Camp	Undetermined Pre-Contact Aboriginal	David Stothers
AiHc-15	Cambridge Bypass	Camp	Undetermined Pre-Contact Aboriginal	Peter Hamalainen
AiHc-24	Moyer Flats	Camp	Princess Point	William Fox
AiHc-25	McNeal	Camp	Princess Point	Paul Lennox
AiHc-26	Blair Flats NE	Camp	Princess Point	John Redmond
AiHc-29	Beasely	Homestead	Euro-Canadian	Paul Lennox
AiHc-139	Cruikston 1	Camp	Undetermined Pre-Contact Aboriginal	L.R. Parker
AiHc-140	Nathaniel Dodge	Homestead	Euro-Canadian	L.R. Parker
AiHc-141	Cruikston 2	Camp	Late Archaic/Middle Woodland	L.R. Parker
AiHc-142	Cruikston 3	Camp	Undetermined Pre-Contact Aboriginal	L.R. Parker
AiHc-143	Cruikston 4	Camp	Late Archaic Broadpoint	L.R. Parker
AiHc-144	Cruikston 5	Camp	Undetermined Pre-Contact Aboriginal	L.R. Parker
AiHc-145	Cruikston 6	Camp	Middle Archaic, Princess Point	L.R. Parker
AiHc-146	Cruikston 7	Camp	Undetermined Pre-Contact Aboriginal	L.R. Parker
AiHc-147	Cruikston 8	Camp	Middle Woodland	L.R. Parker
AiHc-148	Cruikston 9	Camp	Undetermined Pre-Contact Aboriginal	L.R. Parker
AiHc-150	Aston Brewery	Brewery	Euro-Canadian	L.R. Parker
AiHc-151	Cruikston 10	Camp	Late Archaic	L.R. Parker
AiHc-158	Cruikston 17	Camp	Middle Archaic	L.R. Parker
AiHc-174	Shaniawski	Homestead	Euro-Canadian	L.R. Parker
AiHc-208	Bair McDonald	Homestead	Euro-Canadian	L.R. Parker
AiHc-31	Button	Camp	Late Archaic	William Fox
AiHc-62	Doon Village	Findspot	Undetermined Pre-Contact Aboriginal	R.F. Williamson
AiHc-83	Hidden Valley	Homestead	Euro-Canadian	R.F. Williamson
AiHc-93	-	Camp	Undetermined Pre-Contact Aboriginal	S. Janusas
AiHc-94	-	Camp	Early Archaic	S. Janusas
AiHc-97	-	Findspot	Early Paleo-Indian	S. Janusas
AiHc-123	Gateway 1	Findspot	Early Archaic	Dean Knight
AiHc-124	Gateway 2	Camp	Princess Point/Archaic	Dean Knight
AiHc-159	Cruikston 18	Camp	Early Woodland	L.R. Parker
AiHc-21	Cruikston 21	Kill Site	Undetermined Pre-Contact Aboriginal	L.R. Parker
AiHc-167	Cruikston 22	Findspot	Early Archaic	L.R. Parker

3.1.3 Potential for Historic Archaeological Sites

There are no locations of potential nineteenth century Euro-Canadian site indicated within the limits of the study area on the 1878 H. Parcell & Co. Map of Waterloo Township in the *Illustrated Historical Atlas of Waterloo County* (Figure 2). However historic maps are not always accurate, and the absence of a structure does not necessarily mean none were present. Given the nearby presence of the historic community of Blair, the study area was judged to have moderate to high potential for the recovery of historic archaeological remains.

Figure 3: Stage 2 Survey Methods and Results

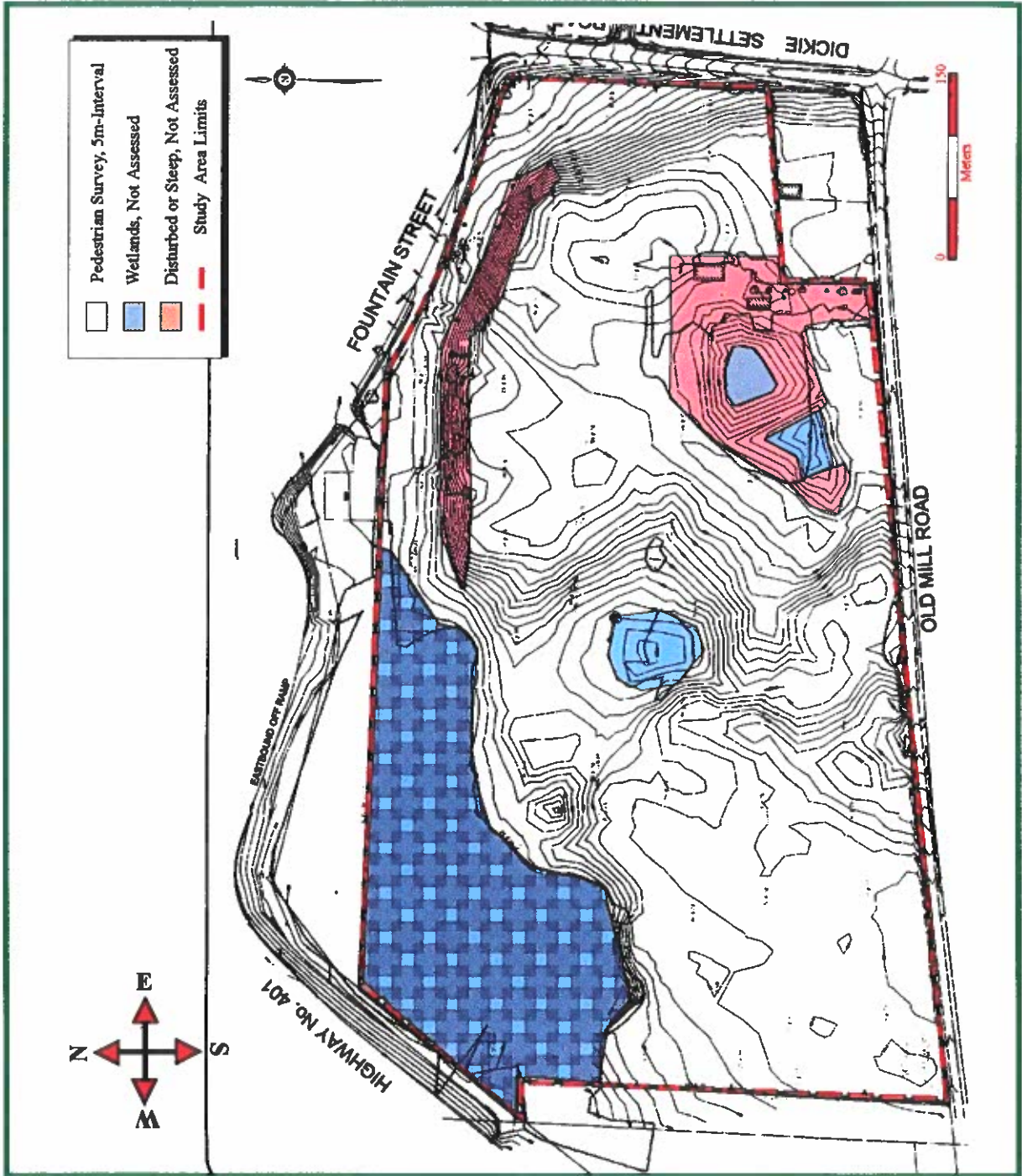


Figure 4: Ploughed Portion of the Study Area



Figure 5: Wetland Area, Not Assessed



Table 2: Cultural Chronology for the Kitchener/Cambridge Area.

PERIOD	CHARACTERISTICS	TIME	COMMENTS
Early Paleo-Indian	Fluted Projectiles	9000 - 8400 B.C.	spruce parkland/caribou hunters
Late Paleo-Indian	Hi-Lo Projectiles	8400 - 8000 B.C.	smaller but more numerous sites
Early Archaic	Kirk and Bifurcate Base Points	8000 - 6000 B.C.	slow population growth
Middle Archaic	Brewerton-like points	6000 - 2500 B.C.	environment similar to present
Late Archaic	Lamoka (narrow points)	2000 - 1800 B.C.	increasing site size
	Broadpoints	1800 - 1500 B.C.	large chipped lithic tools
	Small Points	1500 - 1100 B.C.	introduction of bow hunting
Terminal Archaic	Hind Points	1100 - 950 B.C.	emergence of true cemeteries
Early Woodland	Meadowood Points	950 - 400 B.C.	introduction of pottery
Middle Woodland	Dentate/Pseudo-Scallop Pottery	400 B.C. - A.D.500	increased sedentism
	Princess Point	A.D. 550 - 900	introduction of corn
Late Woodland	Early Ontario Iroquoian	A.D. 900 - 1300	emergence of agricultural villages
	Middle Ontario Iroquoian	A.D. 1300 - 1400	long longhouses (100m +)
	Late Ontario Iroquoian	A.D. 1400 - 1650	tribal warfare and displacement
Contact Aboriginal	Various Algonkian Groups	A.D. 1700 - 1875	early written records and treaties
Historic	Euro-Canadian	A.D. 1796 - present	European settlement

3.2 Stage 2 Field Assessment

Despite the moderate to high archaeological potential of the property, the Stage 2 field assessment did not result in the identification of any archaeological materials and additional assessment is not recommended.

4.0 RECOMMENDATIONS

The Stage 2 field assessment resulted in the identification of no archaeological resources and additional assessment is not recommended.

Should deeply buried archaeological material be found on the property during construction activities, the Ministry of Citizenship, Culture and Recreation should be notified immediately (519)-675-7742. In the event that human remains are encountered during construction, the proponent should immediately contact both the MCzCR and the Registrar or Deputy Registrar of the Cemeteries Regulation Unit of the Ministry of Consumer and Commercial Relations, (416) 326-8392.

The Stage 1-2 archaeological assessment was conducted in advance of a standard condition of development. The Ontario Ministry of Citizenship, Culture and Recreation (MCzCR) is asked to review the results and recommendations presented in this report. A formal draft plan will be forwarded to the MCzCR for review at a later date. Until that time a letter of clearance is not requested.

References Cited

Chapman, Lyman John and Donald F. Putnam

1984 The Physiography of Southern Ontario (Third Edition). **Ontario Geological Survey Special Volume 2**. Ontario Ministry of Natural Resources, Toronto.

Ellis, Chris J. and Neal Ferris (editors)

1990 The Archaeology of Southern Ontario to A.D. 1650. **Occasional Publication of the London Chapter, Ontario Archaeological Society**, Number 5.

Government of Canada

1995 **Topographic Map Sheet 40 P/8** (Edition 8). Surveys and Mapping Branch, Department of Energy, Mines and Resources, Ottawa.

Government of Ontario

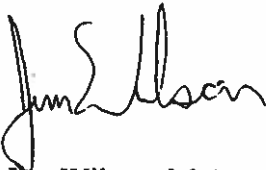
1993 **Archaeological Assessment Technical Guidelines**. Archaeology & Heritage Planning Unit, Cultural Programs Branch, Ministry of Culture, Tourism and Recreation.

.n.d. Archaeological Data Base Files. Heritage Branch, MCzCR, Toronto.

H.R. Page & Co.

1878 **Illustrated Historical Atlas of Waterloo County, Ontario**.

Respectfully Submitted by



Jim Wilson, M.A.
President