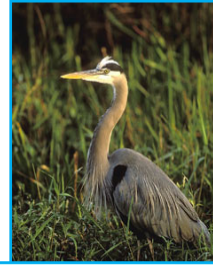


## Parks, Trails & Facilities - Online Activities Guide

Arenas, Cemeteries, Forestry .....	2
Parks, Spray Pads .....	3
Trails .....	4
Community Services Department .....	5
Facility Rental Information.....	6
Skateboard Parks.....	7



## Arenas Summer Skating

Hespeler Memorial Arena #2

### Noon Skate

Mon – Fri @ 12 noon – 2 pm

ONLY \$1/person

Last day June 26

### Public Skate

Sundays @ 2 – 4 pm

ONLY \$3/person

Last day June 28

### Summer Skate

**Saturdays** @ 7:30 – 9 pm

July 4 – Sep 5

ONLY \$2/person

**New**

## Summer Ice Rentals

Chill out this summer at Hespeler Memorial Arena, defeat the heat and rent our *cool* ice



Long weekend rates on Aug 1 & 2, Sept 5 & 6



### Youth Birthday Party Packages

One-hour private ice rental plus two-hour room rental, all for one low price \$133.27

For more rental details & arena programs call 519.740.4681 ext. 4451 for available times and rates

## Non-Ice Arena Floor Rentals

Contact 519.740.4681 ext. 4451 for available times

Email: [lowdens@cambridge.ca](mailto:lowdens@cambridge.ca) or [melos@cambridge.ca](mailto:melos@cambridge.ca)

## Forestry Services

Responsible for managing trees on public property which includes parks, cemeteries, open space and along municipal streets within the road allowance. Our goal is to support and improve the condition of the urban forest, which provides a wide range of ecological benefits.

Annual & seasonal maintenance programs include  
Tree & stump removal  
Trimming & pruning  
Planting & fertilizing  
Disease & pest diagnosis  
Emergency services



Assessments by trained certified arborists identify and determine required maintenance to municipal trees to promote tree health and vigour. All trees located on municipal property are protected under Bylaw #71-06 (to view: [www.cambridge.ca](http://www.cambridge.ca)) and cannot be trimmed, removed or otherwise harmed by the public. Maintenance required to trees located on private residential property is the responsibility of the owner. Residents are encouraged to contact the Forestry Call Centre at 519.740.4681 ext. 4017 to report any problems with municipal trees or for additional information.

### Tree Dedication Program

Trees will be planted in approved areas within City Parks and Cemeteries. Leave a living tribute for future generations to enjoy. Contact 519.740.4681 ext. 4017 for more details  
Email: [melos@cambridge.ca](mailto:melos@cambridge.ca) or [lowdens@cambridge.ca](mailto:lowdens@cambridge.ca)

## Cemeteries

Summer is almost here and it is time once again to tend to your family's gravesite. May 1 was the date by which all winter wreaths and non-approved items (such as artificial flowers other than saddle wreaths) were to be removed from the gravesite. As of May 1, summer regulations commence.



In the 14inch flowerbed in front of upright monuments, the width of the monument you may place natural plant material such as annuals, perennials, or bulbs.

You may now place on top of your flat marker 1 potted plant which is no more than 10" in height or width, and made of a shatter resistant material from May 1 to November 1.

The Cemetery Bylaw has had changes recently made to it. If you are unsure of what you are permitted to place on your gravesite please contact the cemetery office at 519.740.4569 and we will be glad to answer any questions you may have. Thank you for helping to protect your cemetery and create and preserve its beauty.

The only  
cure for  
**LITTER**  
is you.

**Park-ticipation**  
**Visit a local park today; you'll feel a lot better for it!**



Many of our parks have amenities such as playground equipment, picnic tables, shelters, woodlots and washroom facilities. If you notice that these amenities have been damaged by vandalism, please assist the Parks Division by reporting it to our Main Office at 519.740.4681 ext. 4214. This will ensure that damages are quickly repaired in order to provide a safe outdoor environment for park users.

The following are excerpts from the City of Cambridge Parks By-Law #188-08. Your co-operation in observing and obeying these rules will ensure a safe and pleasant visit for all park patrons.

- No person shall destroy or cut, mark, break, dig, pull up, burn or in any way damage, injure, remove or deface any park contents.
- No person shall, in any way, strike, hit or otherwise propel a golf ball in a City park.
- No person having the control of an animal shall permit the animal to run uncontrolled in a City park or swim in any water in any City park. All dogs must be on a leash.
- It is the responsibility of the person having control of any dog, cat or other animal on park grounds, to remove their animal's defecation from park grounds and deposit such defecation into a proper waste receptacle.
- To ensure sport field turf is allowed a healthy start into the growing season, please stay off those fields which are posted "unplayable".
- Your co-operation is greatly appreciated.

**Picnic Areas**

We have 3 sheltered areas and 3 beautifully treed areas to fulfill everyone's needs. Bring the kids and enjoy the playground or splash pad.

To reserve a picnic area please contact 519.740.4681 Ext. 4214.

\* Propane barbeques only permitted in City of Cambridge Parks.

**Riverside Park**

- Dolph Area (shelter)
- Kin Area (shelter)
- 3-Corners Area
- Front Area

**Churchill Park**

- Playground Area

**Soper Park**

- Picnic area (shelter)



**Spray Pad Locations**

- Churchill Park – 200 Christopher Dr.
- Lincoln Park – Vimy Street
- Northview Hts. – 120 Carter Cr.
- Soper Park – Dundas St./Marion Way
- Victoria Park – Fisher Mills Rd.
- Ferguson Homestead – Cowan Blvd.
- Forbes Park – 16 Kribs St.
- Hespeler Optimist – Ellis Rd.
- Weaver Park – Weaver St.
- Riverside Park – 49 King St. W.

Spray pads are open from 10:00 am to 9pm, Approx. June 12 to September 1 (weather permitting).

**Getting Married?**

Consider an outdoor wedding set in Cambridge's Mill Race Park amphitheatre?



Reservations are required for wedding ceremonies and wedding pictures at Mill Race Park on **Saturday's only**, from May to the last Saturday in September.

The fee for Mill Race Park will be determined on the basis of:

- **Wedding Ceremony Only**
- **Wedding Pictures Only**
- **Both Ceremony/ Pictures**

Please visit our web-site for a Reservation Request form at [www.cambridge.ca](http://www.cambridge.ca) or call the Community Services Department for availability of Mill Race Park and 2009 fees at 519.740.4681 ext. 4214.

**LEASH FREE DOG PARK**

**USE AT YOUR OWN RISK**

A leash free area for dogs is located on Maple Grove Road just east of Boxwood Avenue.



- Dogs must be leashed outside of fenced area;
- All dogs must be wearing up to date licenses and vaccination tags;
- No more than 2 dogs per owner/handler;
- Aggressive or sick dogs are **NOT** permitted in the park;

**Additional rules and regulations are posted on site. PLEASE read this information prior to using the Park.**

**CHECK OUT OUR REVISED TRAILS PAGE and INTERACTIVE TRAIL MAP**  
[www.cambridge.ca/community\\_services/trails\\_and\\_cycling](http://www.cambridge.ca/community_services/trails_and_cycling)

## 12<sup>th</sup> Annual Tour de Grand: Family Bicycle Ride, June 14



This year's ride will take place on Sunday, June 14, 2009.

Meet at Duncan McIntosh Arena, (Churchill Park), 200 Christopher Drive, Cambridge.

The Tour offers bicycle rides for all levels - 10, 15, 25, 50, 60, 72, 100 and 160 km routes. The event provides participant t-shirts for the first 600 registrants only, food and drinks including lunch (included with your low cost registration fee).

For additional information please visit the Tour de Grand website at [www.cambridgetourdegrand.com](http://www.cambridgetourdegrand.com) or call 519.622.1087

### Motorized Vehicles Not Permitted on City Trails

Motorized vehicles (with the exception of motorized mobility scooters/wheelchairs) are **not** permitted on Cambridge Trails, Parks or open spaces, (this includes ATV's, snowmobiles, motorcycles, dirt bikes, and electric/gas powered recreational scooters). As a reminder, horses are also not permitted on any Cambridge Trails. This past year the City made changes to its by-laws to allow for the laying of charges for illegal use.



Motorized vehicles not permitted on trails

*Do you have a trail comment or concern or want to receive a free copy of our trails package which includes a trail map?  
Please call 519.740.4681 ext 4275 or e-mail [trails @ Cambridge.ca](mailto:trails@Cambridge.ca)*

## Trails Plans for 2009

Phase 3 of the **Moffat Creek Trail** upgrading replaces and widens the existing asphalt path between Christopher Drive and Duncan MacIntosh Arena in Churchill Park. The project includes accessibility improvements.

At **Jacob's Landing** a paved ramp will be installed next to the steps.

2 Interpretive signs will be erected on **Brewster Trail** near Hammet St. and Housler Lane.

Lighting will be provided along the dike top trail next to George Street across from Dickson Park for a section of the **Grand Trunk Trail**.

A new short section of trail next to Savage Field will complete the **Riverside Park ring road trail loop** to keep pedestrians safe and off of the road.

Additional trails sections will be constructed in the **Millpond Community in north Hespeler** which will link to the Silverheights Trail. A public Trail hike is planned for June 27<sup>th</sup>.

A **feasibility study** will look into the possibility for a **pedestrian/cycling bridge over HWY 401** in the vicinity of Franklin Boulevard.



Trailhead signs are provided at most trail parking lots. 3 new trailhead signs were installed last fall.



## Organized Saturday Morning Trail Walks in July/Aug.

This summer join the Cambridge Trails Advisory Committee (CTAC), on a series of trail walks throughout the city. Every Saturday morning in July and August, a trails committee member will lead a one (1) hour walk along one of our many trails from **9-10am**. Learn about the flora, fauna, and history associated with the trails, and best of all get active! Bring out the whole family for this great activity.

**Hikes take place rain or shine.**

### July 4 – Blair Trail

Meet and park at Bean-Ormston Park, on Fountain St. near Blair Rd

### July 11 – Grand Trunk Trail

Meet and park at Riverbluffs Park near the rowing club

### July 18 – Living Levee Trail

Meet and park at Waterworks Park

### July 25 – Devils Creek Trail

Meet and park at Morva Rouse Parkette on Blair Road

### August 1 – Mill Run Trail

Meet and park at trailhead on Sheffield St (off Guelph Ave.)

### August 8 – Moffat Creek Trail

Meet and park at Churchill Park parking lot, off Hwy. 24.

### August 15 – Linear Trail

Meet and park at parking lot at Hamilton and Chopin Streets.

### August 22 –Northview Heights Trail

Meet at trail near Elgin St. & Acorn Way

### August 29 – Brewster Trail

Meet at trail at Housler Lane/Hammet Street

Look for the CTAC member in the "Hike It, Bike It, Like It" t-shirt and /or official Cambridge Trails gear and they'll be your guide. Dogs permitted on the hikes but must **be on a leash**, and stoop and scoop by-laws are always in effect. For additional details on the summer hikes e-mail trail committee member Bill Kirby at [billkirby2007@hotmail.com](mailto:billkirby2007@hotmail.com)

## Community Services Department

### Cambridge Municipal Offices

50 Dickson Street  
P.O. Box 669, 1st Floor  
Cambridge, Ontario N1R 5W8  
TTY: 519.623.6691

### Acting Commissioner

Reg Weber ... 519.740.4681 ext. 4635

### Parks & Outside Services

**519.740.4681**

George Barnes, Director ..... ext. 4568  
Cemeteries ..... ext. 4299  
Horticulture & Forestry ..... ext. 4017  
Parks Operations ..... ext. 4214



### Arenas and Halls

**519.740.4681**

David Brisson, Director ..... ext. 4567  
Hall & Ice Bookings ..... ext. 4451

### Facilities Management & Development Division

**519.740.4681**

Bob Paul, Director ..... ext. 4626  
Design & Development ..... ext. 4561

### Community Recreation Services and Partnership Development

**519.740.4681**

Reg Weber, Director ..... ext. 4635  
Sports/Active Living ..... ext. 4652  
Arts & Culture ..... ext. 4565  
Youth ..... ext. 4371  
Inclusion ..... ext. 4276  
TTY ..... 519.623.6691  
Volunteer Inquiries ..... ext. 4586  
50+ ..... ext. 4406  
Aquatics & Fitness...Dolson ext. 4527  
..... Johnson ext. 4469

## Community Services Facilities

### Arenas

519.740.4681 ext. 4451

### Arenas Administration & Dickson Centre

30 Parkhill Road West

### Duncan McIntosh Arena

200 Christopher Drive

### Galt Arena Gardens

98 Shade Street

### Hespeler Memorial Arena

640 Ellis Road West

### Karl Homuth Arena

1407 Hamilton Street

### Preston Memorial Auditorium

1458 Hamilton Street

### Arts and Culture

### Cambridge Centre for the Arts

60 Dickson Street ..... ext.4379

### Community Centres

### Allan Reuter Centre

507 King Street East ..... ext. 4406

### David Durward Centre

62 Dickson Street ..... ext. 4360



### John Dolson Centre

212 South Street ..... ext. 4527

### W.G. Johnson Centre /

### G.E. Ted Wake Lounge

31 Kribs Street ..... ext. 4469



Please note several department phone numbers and extensions have changed.

### Active Kids = Tax Credit

The **Children's Fitness Tax Credit**, issued by the Government of Canada, is available to families with children under the age of 16 enrolled in physical activity recreation programs. For more information visit the Canada Revenue Agency's website at [www.cra-arc.gc.ca/fitness/](http://www.cra-arc.gc.ca/fitness/)

Look for this symbol for eligible programs



Tax receipts are issued for use when completing your tax return.



## Other Municipal Offices

Chief Administrator ..... 519.740.4683  
Corporate Services ..... 519.740.4685  
Tax Division ..... 519.740.4524  
Fire Department ..... 519.621.6001  
Economic Development 519.740.4536  
Clerks ..... 519.740.4680  
Engineering ..... 519.740.4682  
Public Works ..... 519.740.4684  
Planning Division ..... 519.740.4650  
Building/ Enforcement 519.740.4613

## Planning a Pool Party?

Check out these great rates for your private pool parties! At the **W.G. Johnson Centre**, you can invite up to 25 people for \$124.85 per hour. At the **John Dolson Centre**, rent for up to 25 people for \$101.80 per hour. At either facility, for each additional group of up to 25 guests, add only \$23.05 per hour. Book a gym as part of your pool party for only \$18 per hour. At the Dolson Centre you may save more by sharing the pool with other groups. Call for details.

## The Whole Gym

Want to practice free throws with no one watching? Or get your friends together for a game? You can rent one of our gyms for only \$33 per hour. Call the Johnson and Dolson Centres for details.

## Meeting Room Rates

See chart below for meeting room rates. Community Groups listed in the Community Groups Directory pay a holding fee of \$65 annually for one regular meeting per month.

## Catered Meetings & Parties

Catering is available at the David Durward Centre or Cambridge Centre for the Arts. The banquet hall/Toyota Auditorium may be licensed and can seat between 70 and 160. To order, call the David Durward Centre at 519.740.4681 ext. 4369



**Please note: Rental rates do NOT include GST**

Facilities	Halls & Multipurpose Rooms	Rental Rate (does not include GST)	Meeting Rooms
<b>Allan Reuter Centre</b> 507 King Street 519.740.4681 ext. 4433	Capacity: 80	\$25 per hour \$100 per day	5 Rooms Capacity: 10 – 40 \$20 / hour
<b>Centre for the Arts</b> 60 Dickson Street 519.740.4681 ext. 4377	Capacity: 200 Licensing Available Catering Available	\$25 per hour \$145 / \$240 Sun – Fri \$190 / \$290 Saturday	Capacity: 15 – 25 \$20 / hour
<b>City Hall</b> 50 Dickson Street 519.740.4681 ext. 4277	Capacity: 200 (Bowman Room & Atrium) Licensing Available	<b>Non-Profit</b> Bowman A <u>or</u> B \$83.05 flat rate Bowman A <u>&amp;</u> B \$101.10 flat rate Atrium \$110.00 flat rate <b>Private/Corporate</b> Bowman A <u>or</u> B \$203.05 flat rate Bowman A <u>&amp;</u> B \$341.10 flat rate Atrium \$360.00 flat rate	Bowman Room A Capacity: 50  Bowman Room B Capacity: 50  Combination A & B Capacity: 100  Atrium Capacity: 100
<b>David Durward Centre</b> 62 Dickson Street 519.740.4681 ext. 4359	Capacity: 75 – 100 Licensing Available Catering Available	\$25 per hour \$100 per day	Capacity: 25 \$20 / hour
<b>Dickson Centre</b> 30 Parkhill Road West 519.740.4681 ext. 4451			Capacity: 40 \$20 / hour
<b>Galt Arena</b> 98 Shade Street 519.740.4681 ext. 4451			Capacity: 25 \$20 / hour
<b>Hespeler Arena</b> 640 Ellis Rd. West 519.740.4681 ext. 4451	Capacity: 350 Licensing Available	\$400 Sunday – Friday \$500 Saturday	<b>Meeting Room:</b> 40 <b>Optimist Room:</b> 50 \$20 per hour
<b>Hespeler Scout House</b> Forbes Park 519.740.4681 ext. 4468	Capacity: 90	\$30 per hour \$120 day	
<b>Hespeler Town Centre</b> 11 Tannery St. East 519.740.4681 ext. 4468	Capacity: 100	\$20 per hour \$120 day	Council Chambers
<b>John Dolson Centre</b> 212 South Street 519.740.4681 ext. 4527	Capacity: 350	\$33 per hour	<b>Activities Room</b> Capacity 20
<b>Preston Auditorium</b> 1458 Hamilton St. 519.740.4681 ext. 4451	Capacity: 175 Licensing Available	\$300 Sunday – Friday \$350 Saturday	Capacity: 40 \$20 / hour
<b>W.G. Johnson Centre</b> 31 Kribs Street 519.740.4681 ext. 4468		\$20 per hour	Three rooms Capacities 12 to 85

# Skateboarding



## Birthday Parties

You can book Pipes and Rails for birthday parties!

Pipes and Rails is available for birthday parties on Saturdays and Sundays between 4 and 6pm.

Please call 519.740.4681 ext. 4451 for details and rates.

## Location:

Duncan McIntosh Hall  
200 Christopher Drive  
519.740.4681 ext. 4205 or 4625

## Hours:

Mon – Fri, 6 – 9 pm  
Sat & Sun, 1 – 4 pm, 6 – 9 pm

## Cost:

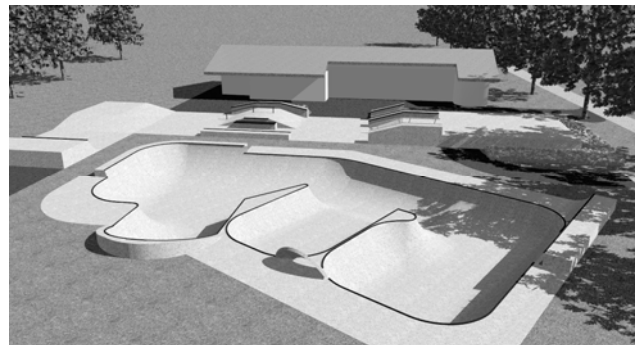
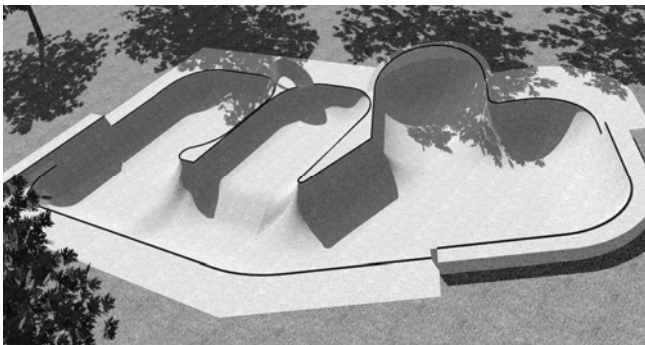
\$100 Three Month Pass  
\$3 per session

## Protective Equipment:

Helmets **MUST** be worn at the skatepark.  
Elbow, knee, and wrist guards are strongly recommended.

## Cambridge's Outdoor Skate Park

Look for the New Bowl in August 2009!  
In Riverside Park – Preston. Check it out!



Here are some concept pictures of our new bowl going into the Riverside Skateboard Park this year! Thanks to the City of Cambridge and a very dedicated group of volunteers, made up mostly of skateboarders, this was able to happen...

Look for the Grand Opening in August 2009!

Any questions email [bryane@cambridge.ca](mailto:bryane@cambridge.ca)