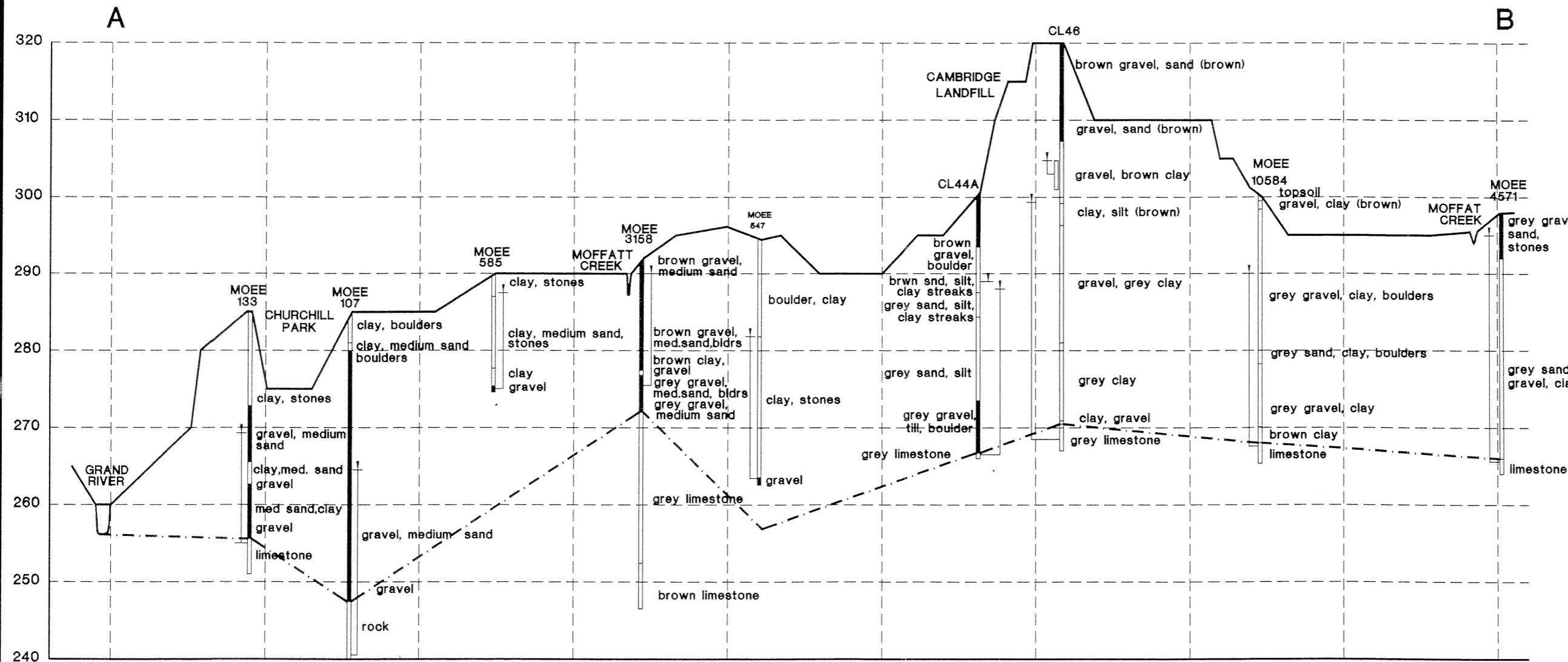


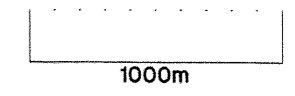
FIGURE 4.13

CROSS-SECTION A-B
SHOWING APPROXIMATE
LOCATION OF BEDROCK
AND STATIC WATER LEVELS
MOFFATT CREEK WATERSHED



LEGEND

- GROUND SURFACE LEVEL
 - - - BEDROCK
 - ↓ INITIAL STATIC LEVEL REPORTED ON WATER WELL RECORD
 - PVIOUS STRATA
- VERTICAL EXAGGERATION · 100

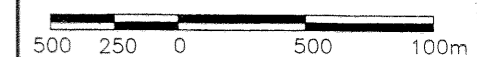


(Refer to Map 4.8 for Location of Cross-section)

**MOFFATT CREEK
WATERSHED STUDY**

DATE: JULY 17, 1995

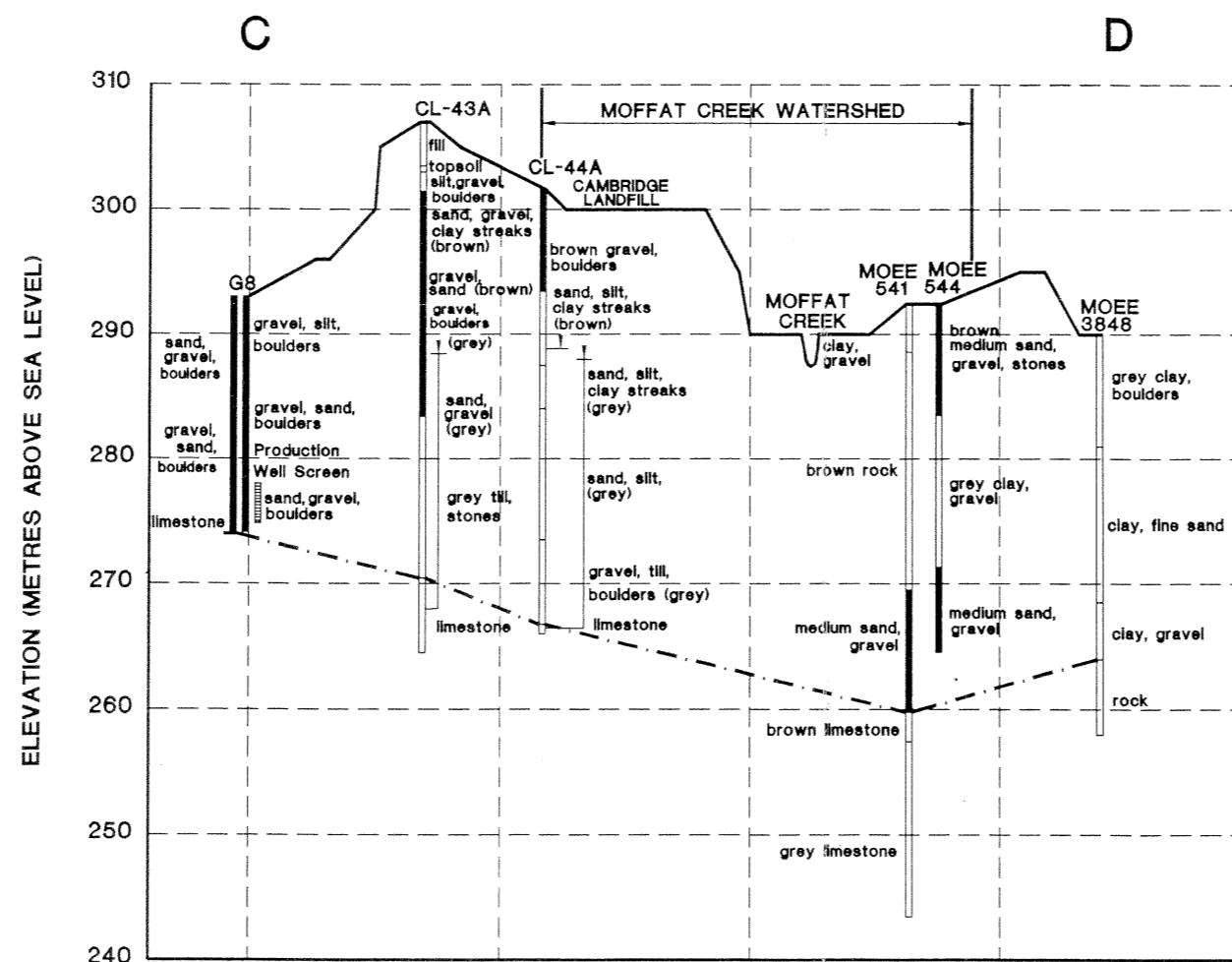
SCALE 1:30000



CAMBRIDGE ENGINEERING AND
PLANNING CONSULTANTS LIMITED

FIGURE 4.14

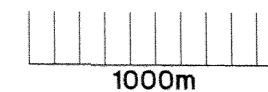
CROSS-SECTION C-D
SHOWING APPROXIMATE
LOCATION OF BEDROCK
AND STATIC WATER LEVELS
MOFFAT CREEK WATERSHED



LEGEND

- GROUND SURFACE LEVEL
- - - BEDROCK
- ∇ INITIAL STATIC LEVEL REPORTED ON WATER WELL RECORD
- PERVIOUS STRATA

VERTICAL EXAGGERATION · 100



(Refer to Map 4.8 for Location of Cross Section)

MOFFAT CREEK
WATERSHED STUDY

DATE: JULY 17, 1995

SCALE 1 : 30000



CAMBRIDGE ENGINEERING AND
PLANNING CONSULTANTS LIMITED

FIGURE 4.15
STUDY PROCESS FOR IDENTIFICATION OF KEY WETLAND FUNCTIONS AND
DEPENDENCIES

