

**CORPORATION OF THE CITY OF CAMBRIDGE
HESPELER WEST SUBWATERSHEDS STUDY
WORKING COMMITTEE
MEETING AGENDA
Thursday, May 6, 2004
Galt Room, Farmers' Market Building
(corner of Ainslie and Dickson Streets)
2nd Floor – Galt Room
3:30 p.m. to 5:30 p.m.**

1. Introductions
2. Declarations of Pecuniary Interest
3. Confirmation of Minutes (attached)

THAT the Minutes of the Hespeler West Subwatersheds Study Working Committee meeting held April 15, 2004 be considered for errors and/or omissions.

4. Presentation and Discussion – Natural Heritage System Enhancement and Stewardship Areas – Wendy Wright, City of Cambridge
 - (a) Memo from April Souwand dated April 22, 2004 Re: Greenspace Management Strategy – Figure C.3.3.1
 - (b) Maple Grove Wetlands Association – Issues List April 30, 2004
 - Buffers – Note items 2 to 6
 - Enhancement Land Uses – Note items 7 & 8
 - (c) E-mail from Nancy Davy – GRCA – Wetland Buffer policies re: 1992 Policy and GRCA Wetlands Policy adopted March 28, 2003 (see Policies 6.2.8 to 6.2.15)
 - (d) E-mail and Map – Erich Ritzmann – Enhancements
5. Other Business
 - (a) Follow-up List Attached
 - (b) List of Topics for Upcoming Meetings Attached
 - (c) Field Visits – Discuss Timing
 - (d) Ponds Discussion – Maple Grove Wetlands Association
 - (e) Memo from Hans Madan Re: Toyota Lands and Fill Regulations

Next Meeting Date – Thursday, May 20, 2004
Allan Reuter Seniors Centre, 507 King Street
3:30 p.m. to 5:30 p.m.



CITY OF CAMBRIDGE
Planning Services Department
73 Water Street North, 3rd Floor,
P.O. Box 669,
Cambridge, Ontario N1R 5W8
Telephone: (519) 740-4650ext: 4601
Fax: (519) 622-6184
Email: souwanda@city.cambridge.on.ca

Memorandum

File No.: D03.01.09.01

Date: April 22, 2004

To: Hespeler West Subwatersheds Study Working Committee

From: April Souwand, Senior Environmental Planner

Re: Greenspace Management Strategy Map

At the April 15, 2004 Hespeler West Subwatersheds Study Working Committee meeting, John Vasiga raised a question regarding the Greenspace Management Strategy map. He referred to an August 2002 version of the map (copy attached) which is substantially different than the map shown in the November 2003 version. The August 2002 map is from the first draft of the Hespeler West Subwatersheds Study. It is the version that was presented at the second Public Open House on September 12, 2002. It was subsequently changed based on public and steering committee members' input and refinement by the consulting team. This refined Greenspace Management Strategy was presented in the October 2002 Public Draft that was presented to Cambridge Council on November 11, 2002 and offered for public review. The Steering Committee also received copies of the October 2002 Public Draft for final review. The refined map is what was presented to Council for approval dated March 2003.

Mr. Vasiga pointed out two areas of concern on the August 2002 Greenspace Management Strategy map which changed from August 2002 to March 2003. The first was the width of the enhancement area recommended along the east side of Boxwood Drive between the large wooded area and the upstream end of West Creek. This was reduced to 50 metres to reflect the 50 metre corridor width recommended for West Creek.

The second area of concern was north and south of Maple Grove Road at East Creek where an enhancement area was added. An excerpt from the response to the landowner made in correspondence dated March 6, 2003 follows:

“Enhancement Area Identified in Subcatchment #1130: You are correct in identifying that this enhancement area along the East Creek Corridor north of Maple Grove Road was added to *Figure C3.3.1 Greenspace Management Strategy* in the October 31, 2002 Public Draft of

the document. Our consultant, Dougan and Associates – Ecological Consulting Services, had provided the following explanation. The identification of wildlife corridors throughout the study area was achieved through aerial photo interpretation of habitats supplemented with seasonal field studies. Wildlife use naturally vegetated corridors more often than areas that do not provide them with adequate cover or food. A naturally vegetated corridor already exists in this area along East Creek. This is an important connection between the headwaters and the Speed River corridor, that will become even more important and also constrained as land uses change in the subwatersheds. The present size, quality and alignment of natural features along East Creek at Maple Grove Road is affected by past impacts from Maple Grove Road and adjoining rural land uses. Regionally significant species were identified in the existing creek corridor immediately north and south of Maple Grove Road. The goals of the proposed enhancement areas here and elsewhere in Hespeler West are to ensure adequate future corridors to sustain existing species and habitats, and ensure the movement of plant and wildlife species through the landscape.”

“In the Subwatershed Plan, Enhancement Areas are intended to guide more careful planning of particular uses when land uses change over time. They do not preclude future development, and they are useful to help guide the stewardship of existing agricultural land uses.”

“Map Figure C3.3.1 Greenspace Management Strategy: There were many refinements made to the entire document from the August 2002 version to the October 31, 2002 Public Draft. The changes reflected public feedback, input from the Technical Steering Committee, and internal review to ensure the consistency of the management approaches across the entire plan. This type of review and adjustment is a normal part of the subwatershed planning process. It would be very difficult to point out each and every change in the document. Instead, a long public review period was made available for people to read and digest the report in its entirety.”

In summary, the map discussed at the April 15, 2004 HWSSWC meeting was not the map recommended to Council. The current map being reviewed for recommendation to council is dated November 2003.



April Souwand

Attach.

Hespeler West Subwatersheds Study



- FLOODLINES
- SUBWATERSHED BOUNDARIES
- STREAMS
- 15 METRE STREAM BUFFERS
- CONTOURS (5 m INTERVAL)
- SIGNIFICANT NATURAL HERITAGE FEATURES
- 30 METRE NATURAL HERITAGE BUFFER
- ENHANCEMENT AREAS
- STEWARDSHIP AREAS
- EXISTING INDUSTRIAL

THE CORPORATION OF THE CITY OF CAMBRIDGE, 1100 BAY STREET, CAMBRIDGE, ONTARIO N2G 1A1
PLANNING & ENGINEERING INITIATIVES LTD., 1000 SHEPPARD AVENUE EAST, SUITE 200, SCARBOROUGH, ONTARIO M1S 1T7
DOUGAN & ASSOCIATES, 1000 SHEPPARD AVENUE EAST, SUITE 200, SCARBOROUGH, ONTARIO M1S 1T7

**THE CORPORATION
OF THE CITY
OF CAMBRIDGE**

**PLANNING &
ENGINEERING
INITIATIVES LTD.**

**DOUGAN &
ASSOCIATES**

GREEN SPACE MANAGEMENT STRATEGIES

Scale: 1:16000

Date: August 2002

Project No.: DA01-40A

Figure: C.3.3.1



The Maple Grove Wetlands Association (MGWA) in conjunction with input from the property owners in the Hespeler West Subwatersheds Study (HWSS) area, have noted a few of the concerns which still need to be addressed by the City.

This list augments, and in some ways details aspects of, Part I which was issued by the MGWA at the outset of the HWSS WC in October 2003.

1. Rankings of cultural features as high constraint by the HWSS requires an independent review of constraint rankings.
2. Context sensitive buffering which considers the quality of feature being protected and which acknowledge the advanced state of human disturbance existent.
3. Wetland buffers that don't exceed the 15m.
4. Upland forest buffers that don't exceed 3m.
5. Plantations buffered by 1m.
6. No buffering of other cultural features.
7. Enhancement recommendations need to be removed/reduced in cases where core feature already meets the 50m (local) or 200m (primary) width criteria.
8. Enhancement recommendations for areas adjoining or crossing anthropogenic units and major impediments such as roadways must be re-evaluated.
9. Recognition of vital role pond habitat plays to the local ecology, and its contribution to valuable ground water recharge needs to be made, rather than consideration for removal.
10. Consistent application of science.
11. Social and economic factors really considered (not just lip service).
12. Summary report to contain corrected data.
13. HWSS corrections that are recorded in the erratum must also be flagged on any maps and pages of text that are implicated, if the error is permitted to persist.
14. The fact clearly stated publicly and in the summary report, that numerous and serious errors were identified necessitating the WC and the additional report.
15. Everyone needs to be treated equally; not restricted to, though including, city owned industrial developed areas like private owned residential developments.
16. Final review of summary report.
17. Removal of open space designation and OS1 zoning in inappropriate areas.
18. Removal of GRCA scheduling in inappropriate areas.
19. Landowner compensation for expropriation (principles set forth in federal legislation).

Wendy Wright

From: Nancy Davy [ndavy@grandriver.ca]
Sent: Monday, May 03, 2004 9:53 AM
To: Wendy Wright
Cc: April Souwand
Subject: RE: Wetland Buffer Policy

June 26, 1992 this Policy was adopted by the Executive Committee of the GRCA by Resolution No. 169-92.

Nancy

-----Original Message-----

From: Wendy Wright [mailto:WrightW@city.cambridge.on.ca]
Sent: Monday, May 03, 2004 9:29 AM
To: Nancy Davy
Cc: April Souwand
Subject: Re: Wetland Buffer Policy

Can you please tell me what date this was adopted. Thanks

Re: Interim Wetland Buffer Guidelines

Res. No. 169-92 Moved by - Mrs. M. Dougherty
Seconded by - Mr. L. Brown (carried unanimously)

THAT the following Interim Wetland Buffer Guidelines be adopted by the Grand River Conservation Authority as policy to be used on an interim basis until the Authority's Wetland Policy is completed and adopted:

1. (a) A 30 m buffer will be applied to all wetlands.
 - (b) Any flexibility in the application of this buffer will only be considered following -
 - i) a detailed evaluation by Environmental Services staff; and/or,
 - ii) an Environmental Impact Study to the satisfaction of Authority staff.
2. (a) The rear lot lines of any new lots should end at the edge of the buffer (i.e. 30 m from the wetland edge). This is certainly the case where the wetland is part of some corridor, or connected system, and there is a desire for public ownership.
 - (b) Where the wetland is isolated, there may be some flexibility in potential ownership. Options such as condominium ownership or conservation easements could then be considered.
3. This 30 m buffer criteria should also be used by staff when developing hazard and fill lines.
4. (a) In the absence of registered fill lines, it is understood that the Authority's Fill, Construction and Alteration to Waterways Regulation ends at the wetland edge.
 - (b) The 30 m buffer will be a planning tool in most instances.



Grand River
Conservation Authority

Grand River Conservation Authority

Wetlands Policy

Approved by the Grand River Conservation Authority
March 28, 2003
Resolution No. 40-03

400 Clyde Road
P.O. Box 729
Cambridge, Ontario
N1R 5W6

www.grandriver.ca

Share the Resources



Share the Responsibility

THE GRAND - A Canadian
Heritage River

- 6.2.7.5 Where an artificial wetland is less than 2 hectares and is not:
- part of a Provincially Significant Wetland, or;
 - located within a floodplain or riparian community, or;
 - part of a Provincially or municipally designated natural heritage feature, a significant woodland, or hazard land, or;
 - fish habitat, or;
 - confirmed habitat for a Provincially or regionally significant species as determined by the Ministry of Natural Resources or determined by the municipality, or;
 - part of an ecologically functional corridor or linkage between larger wetlands or natural areas, or;
 - part of a groundwater recharge area, or;
 - a groundwater discharge area associated with any of the above,
- and it can be demonstrated that the wetland functions can be maintained or improved elsewhere within the subwatershed or planning area.
- 6.2.7.6 Where wetlands have been created as part of a Storm Water Management (SWM) facility.

Protection – Advisory Comments to Member Municipalities

- 6.2.8 The GRCA will provide advice to municipalities, provincial agencies and landowners regarding the protection, enhancement or restoration of wetlands in support of this Policy.
- 6.2.9 Where development is proposed within or adjacent to an unevaluated wetland, the GRCA will request that a wetland evaluation be carried out during the pre-consultation phase using the most recent OMNR Wetland Evaluation System.
- 6.2.10 Where a comprehensive plan is available, the GRCA, in consultation with the affected municipalities, will request a more detailed site-specific study (i.e. a Scoped Environmental Impact Study) to determine the wetland boundary using the most recent OMNR Wetland Evaluation System, appropriate buffers and setbacks using the prescribed guidelines identified in the comprehensive plan, and how the form and functions of the wetlands will be sustained, improved or restored.

- 6.2.11 Where a comprehensive plan is not available or has not prescribed guidelines for determining buffers and setbacks, the GRCA will request an Environmental Impact Statement for development (including lot lines) within 30 metres of the boundary of a non-provincially significant wetland, except where municipal plan policies may require Environmental Impact Statements within a greater distance from the wetland boundary.
- 6.2.12 The GRCA, in consultation with the affected municipalities, will request an Environmental Impact Statement for development (including lot lines) within 120 metres of the boundary of a Provincially Significant Wetland or an unevaluated wetland.
- 6.2.13 The GRCA will encourage member municipalities and the private sector to avoid wetlands in developing golf courses, community trails, cart paths and other recreational facilities.
- 6.2.14 The GRCA will encourage member municipalities and the private sector to avoid wetlands in designing and building transportation and utilities infrastructure.
- 6.2.15 Where wetlands currently used for agriculture are subject to a proposed change in land use, the GRCA will consider them to be wetlands subject to this Policy.

Protection - Advisory Comments to Other Agencies

- 6.2.16 The GRCA will discourage the construction of works proposed under federal and provincial legislation that may destroy or degrade wetlands. Such legislation includes but is not limited to the Canadian Environmental Assessment Act, Ontario Environmental Assessment Act, Ontario Drainage Act, and Ontario Aggregate Resources Act.
- 6.2.17 Where works proceed under federal or provincial legislation, the GRCA will request that they be located and designed to minimize negative impacts on existing wetlands and that opportunities to enlarge or enhance remaining wetlands or linkages among natural heritage features be pursued, where reasonable and appropriate.

6.3 Land Securement

- 6.3.1 The GRCA will acquire wetlands and contiguous buffer lands on a willing-buyer, willing-seller basis, in the following key areas: Keldon Source Area, Amaranth Source Area, Luther Marsh, Roseville Swamp, Beverly Swamp, Mill Creek, Bannister-Wrigley Complex, Irish Creek, Portuguese Swamp, Puslinch Lake, Whitemans Creek Source Area, Oakland Swamp, Dunnville Marshes, and wetlands adjacent to other GRCA-owned lands.
- 6.3.2 The GRCA will accept land dedications, bequests and conservation easements to protect wetlands in the areas described in Section 6.3.1.

Wendy Wright

From: Erich J. Ritzmann [ejritz@genema.org]
Sent: Friday, April 30, 2004 10:47 AM
To: Wendy Wright
Cc: Rick Cowsill; April Souwand; Ken Cornelisse; Chris Gosselin
Subject: Enhancements

Wendy,

as previously mentioned, I have produced some doodle cartography which outlines some of our major concerns with the proposed enhancement recommendations. You may find it here:

http://genema.org/MGWA/wc/C_3_3_1_GMS-MGWA-Enhancements.jpg

The number one concern, has to do with enhancements along major roads: Maple Grove Rd, Fountain St, Middleblock Rd, Speedsville Rd, Beaverdale Rd, and Mohawk Rd. These are regarded as major impediments by the community, and even in the text of the HWSS it acknowledges as much.

A second concern is with respect to crossing significant areas of cultivated field particularly long distances from core features. The longer the distance from core features, the wider the enhancement will need to be, if it is to be realistic -- this however, would go contrary to the social and economic considerations.

A third concern is with respect to anthropogenic units. Several enhancement areas cross anthropogenic units (really should have been purple in the original map). We are proposing to remove the purple on developed properties, and are replacing it with a watershedwide stewardship program. However, the enhancement recommendation can sometimes be achieved by following existing trees and hedgerows around the existing residential areas.

A fourth concern is with respect to enhancement areas which appear on the Greenspace Recommendations map, yet were not recommended per linkage enhancements on C 1.2.1.

So, in addressing these concerns then, we make the following environmentally sound, PPS consistent suggestions:

- 1) Where there is a red X on the map, the enhancement area needs to be reviewed with respect to reducing, changing shape, and in some cases eliminating them completely. Most of the enhancements near roadways should be eliminated -- promoting roadkill would be contrary to the PPS.
- 2) Where there is a red S on the map, there has been a review of the Conceptual Linkages recommendation (which we still feel is really weak from a science perspective, mind you). The S marks a suggested alternate approach to addressing the recommendation so that the existing residential areas are not adversely impacted.
- 3) Where there is a red U/O on the map, there exists a major impediment, to which a proper underpass or overpass must be built.

Note A) We were told that in the Can-Amara situation, walls are being planned to funnel animals into small 1m culverts under the roadway. This means that they are using this to narrow, not widen, the existing linkage. Enhancements along roadways tend to widen the corridor and would work at contrary purposes.

Note B) Walls and small culverts, are regarded as token measures, woefully inadequate for animal corridors from our perspective. A proper solution must be part of the recommendation being made. Having said that, cost is an economic factor, so only proven linkages should be considered for enhancement within 120m of roads.

Note C) Over-sized culverts should continue to be recommended, though they are regarded as woefully inadequate as animal corridors.

Note D) The popsicle sticks to the north and east of the watersheds were not raised as a concern, so I suggest you can leave those as they currently stand.

Please review these points and the accompanying map, and do not hesitate to contact me if you have questions.

--

Erich

Hespeler West Subwatersheds Study



X Review with respect to reducing
or removing enhancement area.

S Conceptual linkage

U/O Underpass or Overpass
Recommendation

? Not sure, what is rationale?

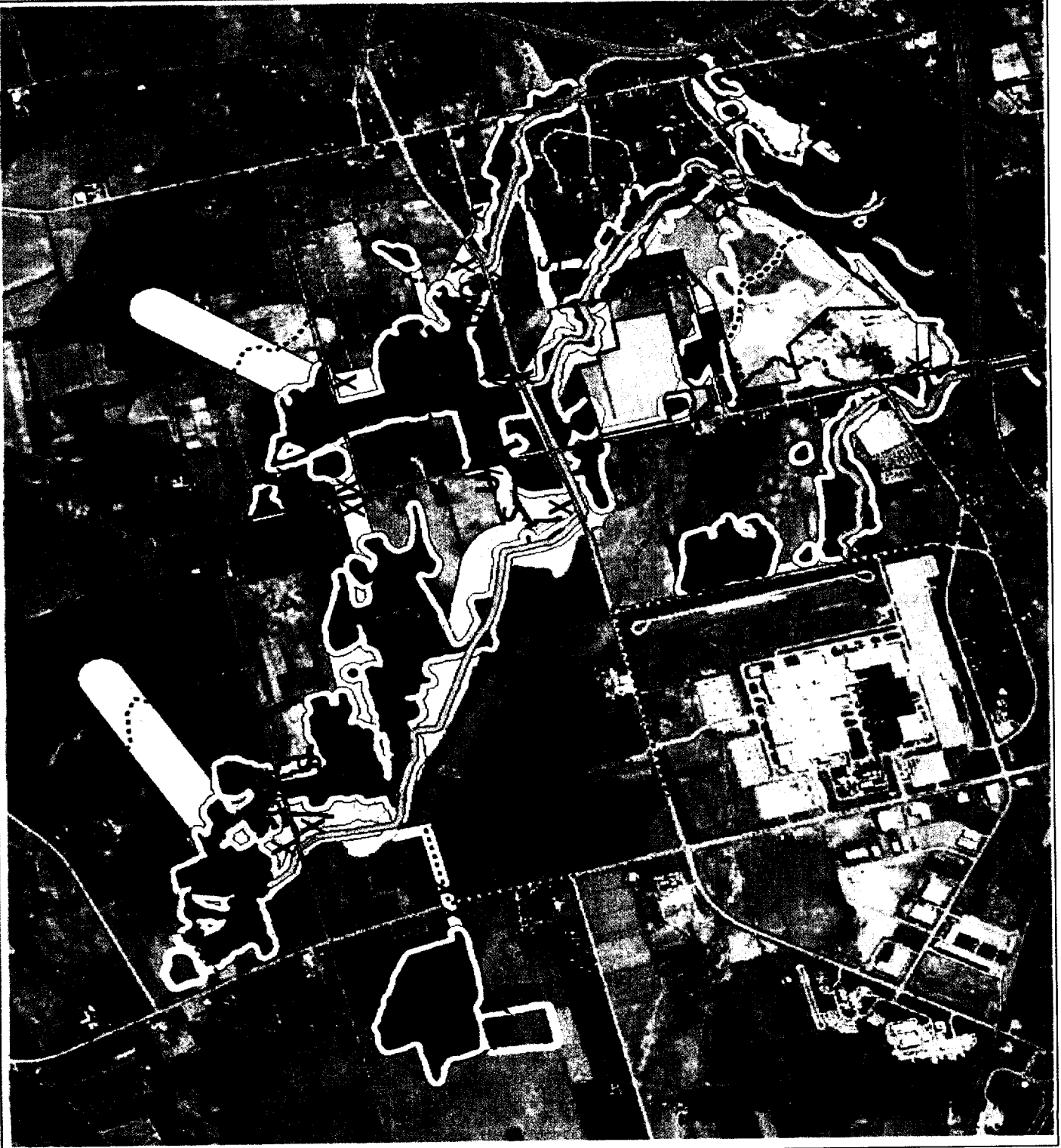
GREENSPACE MANAGEMENT STRATEGY

Scale: 1:17,000

Date: November, 2003

Project No.: DA01-40A

Figure: C.3.3.1



**CITY OF CAMBRIDGE
HESPELER WEST SUBWATERSHEDS STUDY WORKING COMMITTEE
FOLLOW-UP LIST**

SOURCE/ MEETING DATE	ITEM	ASSIGNED TO	COMMENTS	DUE DATE	DONE
HWSSWG Oct. 30/03	Provide full hard copy versions of the HWSS to working committee	April Souwand	Nov. 2003 version to be distributed as soon as it is available from PEIL	Nov. 2003	<input checked="" type="checkbox"/>
HWSSWG Oct. 30/03	Finalize Terms of Reference: <i>Section 7 Time Frame and Work Plan</i> - process for review of community concerns - meetings with individual property owners - review of revised report <i>Section 8 Public Consultation/Information</i> <i>Section 12 Dispute Resolution</i>	Wendy Wright	Wording to be revised based on discussion at meeting	Nov. 19/03	<input checked="" type="checkbox"/>
HWSSWG Oct. 30/03	Choose representative of small property owners	Wendy Wright and Erich Ritzmann	Choose someone who is not represented by MGWA	Nov. 19/03	<input checked="" type="checkbox"/>
HWSSWG Oct. 30/03	Provide name of an alternative representative to committee	Each committee member	An alternative is necessary in cases where member is not able to attend meeting	Nov. 19/03	<input checked="" type="checkbox"/>
HWSSWG Oct. 30/03	Process for review of community concerns	Wendy Wright	Item for discussion on Nov. 19, 2003 Review draft with MGWA – Approved per memo dated Nov. 19, 2003	Nov. 19/03	<input checked="" type="checkbox"/>

Follow-up List
City of Cambridge
Hespeler West Subwatersheds Study Working Committee

SOURCE/ MEETING DATE	ITEM	ASSIGNED TO	COMMENTS	DUE DATE	DONE
HWSSWG Oct. 30/03	Provide list of people wanting site visits	MGWA/City	City has provided MGWA will provide, if needed	Nov. 19/03	<input checked="" type="checkbox"/>
HWSSWG Oct. 30/03	Produce a map of property owners in the study area	April Souwand	Map will be used to keep track of site visits	Nov. 19/03	<input checked="" type="checkbox"/>
HWSSWG Oct. 30/03	Invite City Clerk to next meeting to discuss pecuniary interest	April Souwand	City Clerk attended meeting	Nov. 19/03	<input checked="" type="checkbox"/>
HWSSWG Oct. 30/03	Produce list of previous studies done in HWSS	April Souwand	Examples are Cambridge Business Park Stormwater Management Report	Nov. 19/03	<input checked="" type="checkbox"/>
HWSSWG Oct. 30/03	Develop media protocol	April Souwand	See Pesticides Working Group Protocol	Nov. 19/03	<input checked="" type="checkbox"/>
HWSSWG Oct. 30/03	Schedule of Meetings	April Souwand	Next committee meeting	Nov. 19/03	<input checked="" type="checkbox"/>
HWSSWG Nov. 19/03	Updated List of Members and Alternates	April Souwand		Dec. 18/03	<input checked="" type="checkbox"/>
HWSSWG Nov. 19/03	Establish a Lending Library of Reports	April Souwand		Dec. 1/03	<input checked="" type="checkbox"/>
HWSSWG Nov. 19/03	Add media protocol to Terms of Reference	Wendy Wright	See Revised Terms of Reference	Dec. 18/03	<input checked="" type="checkbox"/>

Follow-up List
City of Cambridge
Hespeler West Subwatersheds Study Working Committee

SOURCE/ MEETING DATE	ITEM	ASSIGNED TO	COMMENTS	DUE DATE	DONE
HWSSWG Nov. 19/03	Invite Ken Cornelisse to present Wetland Evaluation and Classification info.	April Souwand		Dec. 18/03	<input checked="" type="checkbox"/>
HWSSWG Nov. 19/03	Inquire into using City's website to distribute agendas	Wendy Wright/ April Souwand	Will continue to send .pdf files by e-mail due to administrative difficulties	Dec. 18/03	<input checked="" type="checkbox"/>
HWSSWG Nov. 19/03	Terms of Reference Section 7.3 – Review of Specific Areas of Community Concern	Wendy Wright	Review following Presentation/ Discussion of Provincially Significant Wetlands		
HWSSWC Jan. 15/04	Provide a map of Scheduled Areas to MGWA	Nancy Davy	May be followed up with a presentation on the Conservation Authority's Fill, Construction and Alteration to Waterways Regulation	Feb. 5/04	<input checked="" type="checkbox"/>
HWSSWC Jan. 15/04	Refine wetland evaluation mapping for PSW	Ken Cornelisse	Some areas require site visit in spring to make a final determination. Four additional areas identified by MGWA will also be looked at for any changes needed.	Spring 2004	
HWSSWC Feb. 5/04	Provide reference from HWSS to the fact that floodline determination was based on full development scenario.	April Souwand	Memo to Committee	Feb. 19/04	<input checked="" type="checkbox"/>

Follow-up List
City of Cambridge
Hespeler West Subwatersheds Study Working Committee

SOURCE/ MEETING DATE	ITEM	ASSIGNED TO	COMMENTS	DUE DATE	DONE
HWSSWC Feb. 19/04	Report on floodplain determination.	Wendy Wright	Memo to Committee	Mar. 18/04	<input checked="" type="checkbox"/>
HWSSWC Feb. 19/04	Subcatchments 2115, 2120 and 2125 boundary revisions	Wendy Wright	Review as part of Floodline recalculation		
HWSSWC Mar. 4/04	Discussion on channel buffers	April Souwand Nancy Davy	Deferred to discussion on buffers in general	Apr. 1/04	<input checked="" type="checkbox"/>
HWSSWC Mar. 4/04	Placement of Fill on S/E corner of Fountain and Maple Grove to build a parking lot (Toyota)	Wendy Wright Nancy Davy	Check the approval process for this	May 6/04	
HWSSWC Mar. 4/04	Fill placement in floodplain of Middle Creek for City Industrial Subdivision Phase II	Wendy Wright	Check the approval process for site servicing by the City of Cambridge		
HWSSWC Mar. 4/04	Fill placement on island in Speed River, east of Speedville Road bridge.	Nancy Davy	Check whether GRCA is aware of this and if it is a regulated activity.	May 6/04	
HWSSWC Mar. 4/04	Questions arising from Ken Cornelisse's presentation on dams and ponds.	MGWA	Compose a list of questions for Ken.	May 6/04	
HWSSWC Mar. 4/04	Update List of Topics for Upcoming Meetings	Wendy Wright	Update list after discussion with MGWA	Mar. 18/04	<input checked="" type="checkbox"/>

Follow-up List
City of Cambridge
Hespeler West Subwatersheds Study Working Committee

SOURCE/ MEETING DATE	ITEM	ASSIGNED TO	COMMENTS	DUE DATE	DONE
HWSSWC Apr. 1/04	Definition of Development	Wendy Wright	Definition from PPS	Apr. 15/04	<input checked="" type="checkbox"/>
HWSSWC Apr. 1/04	Context Sensitive Buffers	Wendy Wright	Review requirements for 30 m buffers		
HWSSWC Apr. 15/04	Greenspace Management Strategy Map – August 2002 version changes to final draft	April Souwand	Memo to Committee	May 6/04	
HWSSWC Apr. 15/04	John Vasiga's request for Ken Cornelisse to clarify his statement regarding determination of wetland boundaries in April 1/04 minutes	Ken Cornelisse	To provide clarification at May 6/04 meeting as he was not present at April 15/04 meeting when question arose	May 6/04	



The Corporation
of the City
of Cambridge

MEMORANDUM

To: Hespeler West Subwatersheds Study
Working Committee

Date: May 5, 2004

From: Wendy Wright
Commissioner of Planning Services

Our File:

Your File:

Re: Topics for Upcoming Meetings

April 15/04 & May 6/04	<ul style="list-style-type: none">• Constraint Ranking/Stewardship Areas/Enhancement Areas/Buffers/ Implementation – Wendy Wright/April Souwand• Ponds/Dams (MGWA Presentation)
May 20/04	Field Visits
June 3/04	Floodline Calculations
June 17/04	Public Open House (?)
July 8/04	Report on Extraction & Scheduled Areas
July 29/04	Draft Final Report (?)

The presentation by Ken Cornelisse explained many aspects of the ecology of ponds and was very useful. However, time was too short to allow for a discussion. Our intention here is to raise some points that should have been part of such a discussion.

The *Dam Removal Success Stories* referred to in the presentation contains some points that need to be highlighted:

- It was prepared by American Rivers, Friends of the Earth, and Trout Unlimited rather than an unbiased US government agency.
- The average height of the dams studied was 21 ft. with 40 being over 40 ft. and 4 over 120 ft. Average length was 224 ft. The issue here is relevance.
- Main reasons for removal could generally be summarized as to restore a damaged ecosystem, safety concerns, and taxpayer expense to repair and maintain the dams.
- Detailed case histories reported relied heavily on the following reasons for removal:
 - Sport fisheries- salmon, trout, tidal smelt runs were mentioned several times as examples.
 - Structural safety hazards
 - Canoeing, recreation
 - Taxpayer costs and liability
 - Water quality
 - Create waterfowl habitat
 - Improve surrounding aesthetics

In conclusion, the summary paragraph states:

“Removal is not appropriate for all, or even most, of these (tens of thousands of smaller) dams. Far less than one percent of all dams in the United States are even under consideration for removal.”

Comments on the Presentation

Although sediment transport is impeded by dams, erosion is not necessarily a good thing.

The sediment will eventually be deposited somewhere even if not behind a dam.

Destruction of ponds would not necessarily be a completely good thing for water quality. A pond expert examined one Middle Creek pond and determined that it *contained plants vital to improving water quality.*

In the case of Middle Creek ponds, all maintenance has been carried out by residents, so no burden is imposed in the taxpayers or government bodies.

There is no canoeing on Middle Creek but residents have cleared skating rinks on a pond.

It is difficult, if not impossible, to imagine a situation where a safety hazard might exist.

Although removal of some dams might improve fish mobility, when a stream totally dries up, as Middle Creek sometimes does, the wildlife has no refuge nor water if the ponds are not there.

On the other hand, these ponds are home to, or often visited by, a variety of wildlife (including several Regionally Significant Species):

- Frogs (including Bullfrogs)
- Herons (Great Blue, and a grey variety)
- Geese
- Ducks
- Turtles
- Crayfish
- Deer
- Minnows
- Otter
- Groundhogs
- Raccoons
- Opossums
- Skunks
- among others

The removal of the ponds would certainly not benefit the area wildlife.

The ponds have beneficial affects on ground water recharge.

At a meeting held to present the industrial development plans north of Maple Grove to area residents, Miron Docev said emphatically that the flow variations in Middle Creek would be *less variable* (i.e. less flooding, less drying up) after development, due to the construction of retention ponds. This positive aspect of ponds contradicts recent statements denying the moderating influence of ponds.

Although there may have been some specific locations where dam removal helped surrounding aesthetics, it would be devastating in the case of the Middle Creek ponds in residential areas.

In the often inconsistent HWSS, it simultaneously makes the recommendation with respect to aquatic enhancements, to include:

“... the creation of specific habitats such as small ponds ...” (p C-35)

Could it be suggested that it is rather pointless to remove and then recreate the small ponds, disrupting the lives of the wildlife which call this home.

In summary, from an environmental standpoint, the case for pond removal has not been demonstrated. The outrage caused by the social and economic impacts on the residents is an additional consideration.

Treatment of ponds in the HWSS could and should have been more even-handed.



The Corporation
of the City
of Cambridge

MEMORANDUM

To: Wendy Wright
Comm. of Planning Services

Date: April 29, 2004

From: Hans Madan
Dir. of Planning Operations

Our File:

Your File:

Re: Toyota lands and Fill Regulations

In response to your request, I am enclosing a copy of the May 16th, 2001 e-mail reply received from Brian Hunt of the Grand River Conservation Authority. Based on Mr. Hunt's comments, we have not circulated Toyota site plans to the Authority.

Since the receipt of Mr. Hunt's email, two additional site plans under File #s SP11/02 and sp25/03 have been approved and as per Ms. Davy's request we are forwarding copies of the approved plans to her. Further, I have requested the Site Plan Coordinator to circulate all future Toyota site plans to the GRCA.

I trust that the above information is helpful.

Hans Madan
Director of Planning Operations

C: Nancy Davy, GRCA
April Souwand
Linda Redmond

SP34/01

Hans Madan

From: Brian Hunt [bhunt@grandriver.ca]
Sent: Wednesday, May 16, 2001 1:10 PM
To: 'Hans Madan'
Subject: RE: Toyota

File

Hi Hans:

The Scheduled area was only in place to protect the creek years ago. In that the creek has now been piped and conveyed around the site there is no reason for Schedules to cover this site. No permit is required for additions on the Toyota site.

-----Original Message-----

From: Hans Madan [mailto:MadanH@city.cambridge.on.ca]
Sent: Wednesday, May 16, 2001 12:01 PM
To: 'bhunt@grandriver.ca'
Cc: Leah Bozic
Subject: Toyota

Hi Brian: Toyota is planning another addition. The site work is scheduled in about three weeks with construction to follow immediatly. There is a fill line on part of their site. However, if understand correctly, the watercourse was rerouted or burried. So the question is whether they need GRCA approval and if so what type and how long would it take? The extent of the work proposed does not appear to go into the fill lines but comes close. Your prompt response will be highly appreciated. Thanks you.