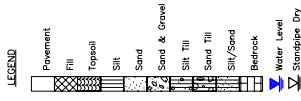
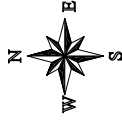


Hespeler West Subwatersheds Study



THE CORPORATION OF THE CITY OF CAMBRIDGE



In association with:
C. Post and Associates
Design and Associates
Subsidiary of
Schubert and Associates
Agfirm

Cross Sections C - C'

Scale: 1:15000

Date: April 2003

Project No.: K1253

Figure: B1.3.3

