



City of Cambridge Dickson Street Feasibility Study

Public Information Centre
November 13, 2008



1 Purpose of Today's Meeting

- Present alternative options for the reconfiguration of Dickson Street
- Gather public feedback to presented options
- Determine the next steps for the project

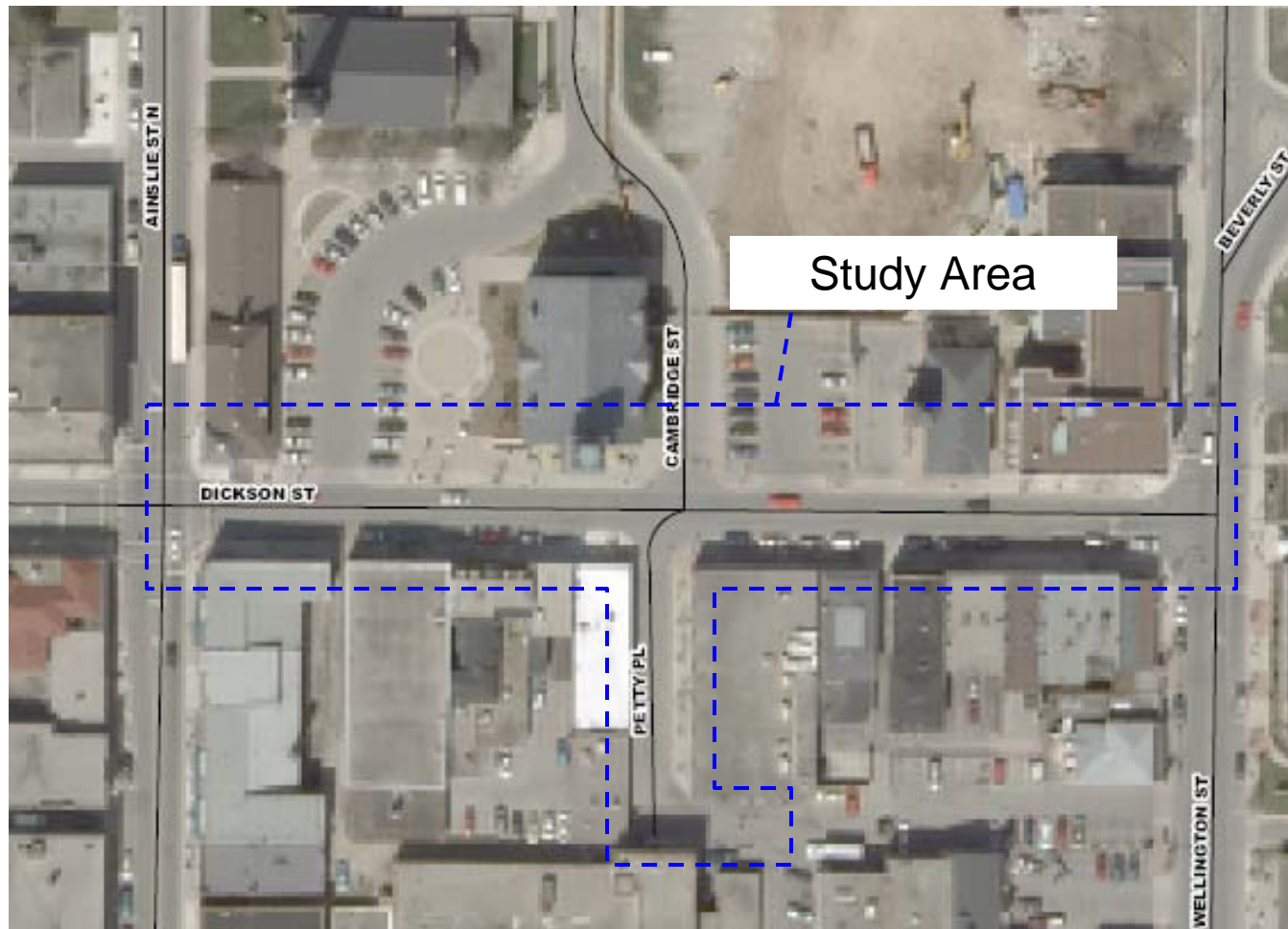


2 Study Purpose

- To determine the feasibility of closing Dickson Street between Ainslie St. and Wellington St. on an occasional, temporary basis for special events.
- To explore streetscape improvements to this section of Dickson Street and Petty Place.



3 Study Area



4 Existing Conditions - Streetscape



High Quality Landscaping Surrounding Cambridge Administration Building has potential to be expanded to Dickson Street



Poor Conditions for Street Trees



Inconsistent Pedestrian Conditions and Amenities

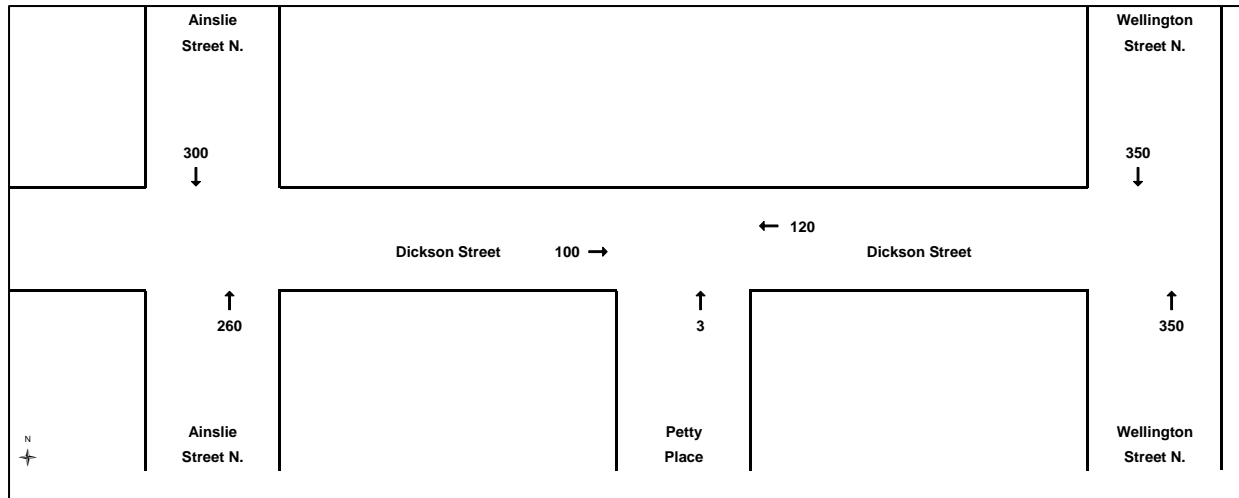


Narrow Sidewalk and Lack of Space for Large Refuse Containers on Petty Place

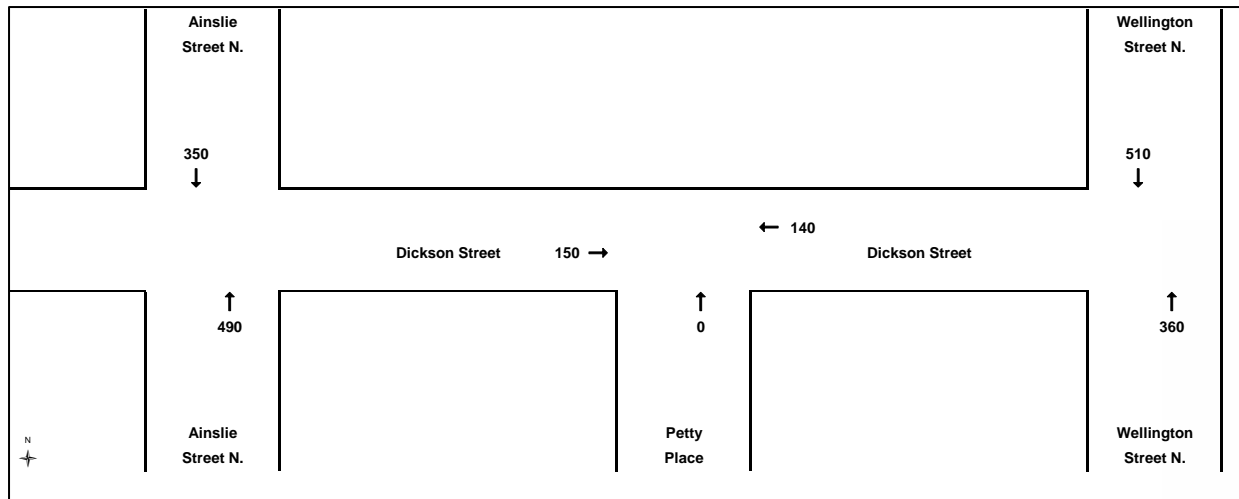


5 Existing Conditions – Traffic Volumes

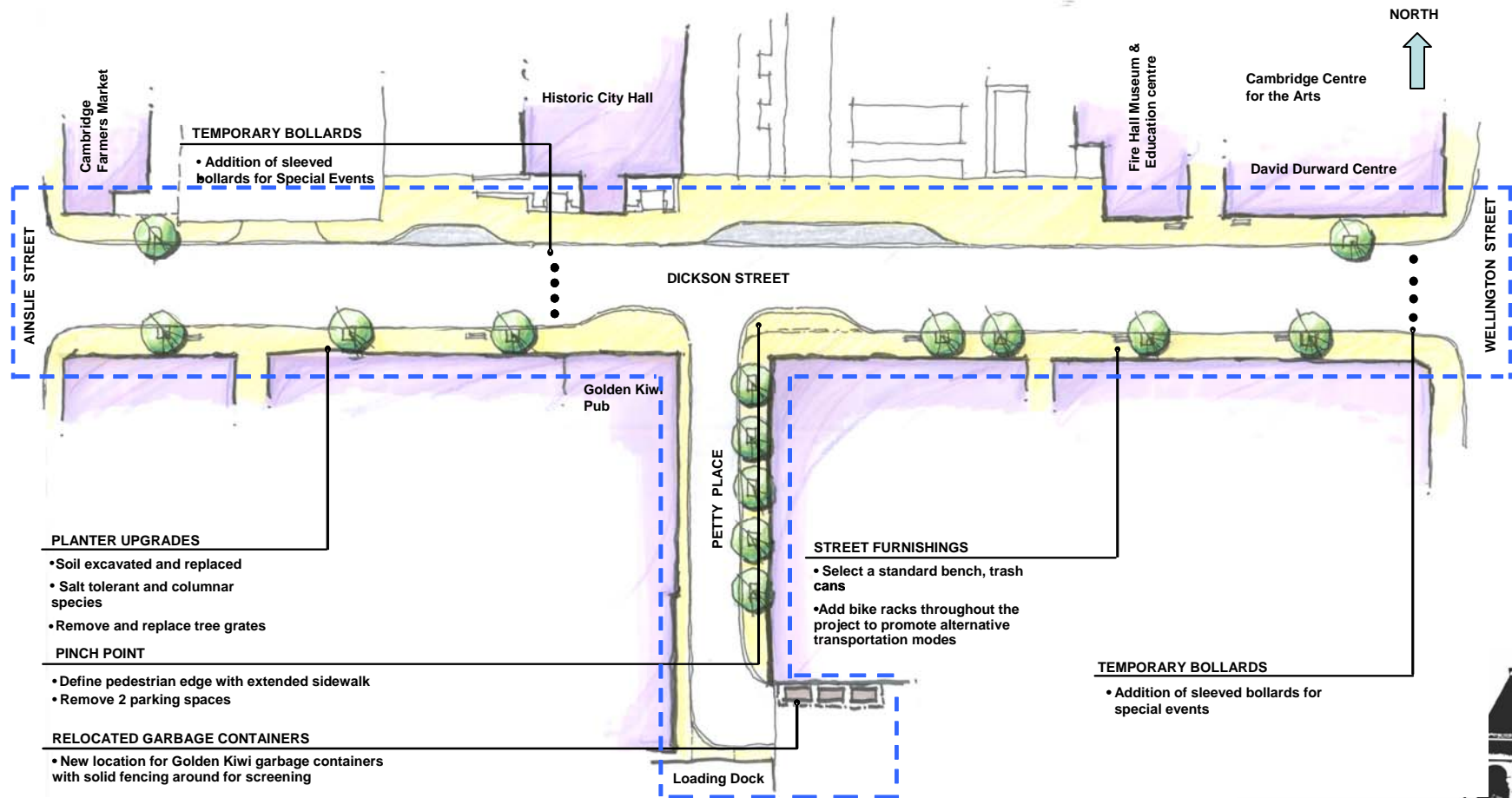
AM



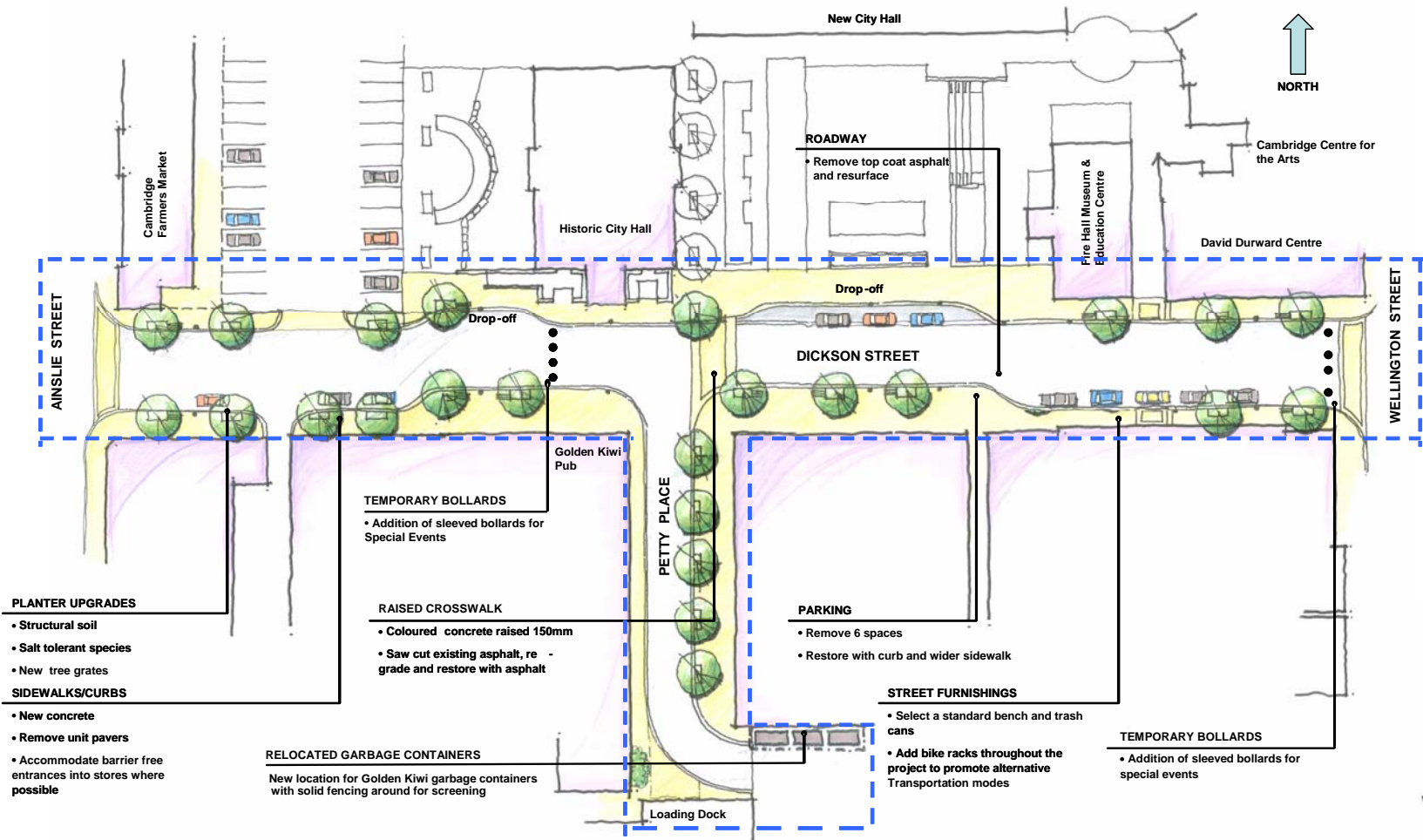
PM



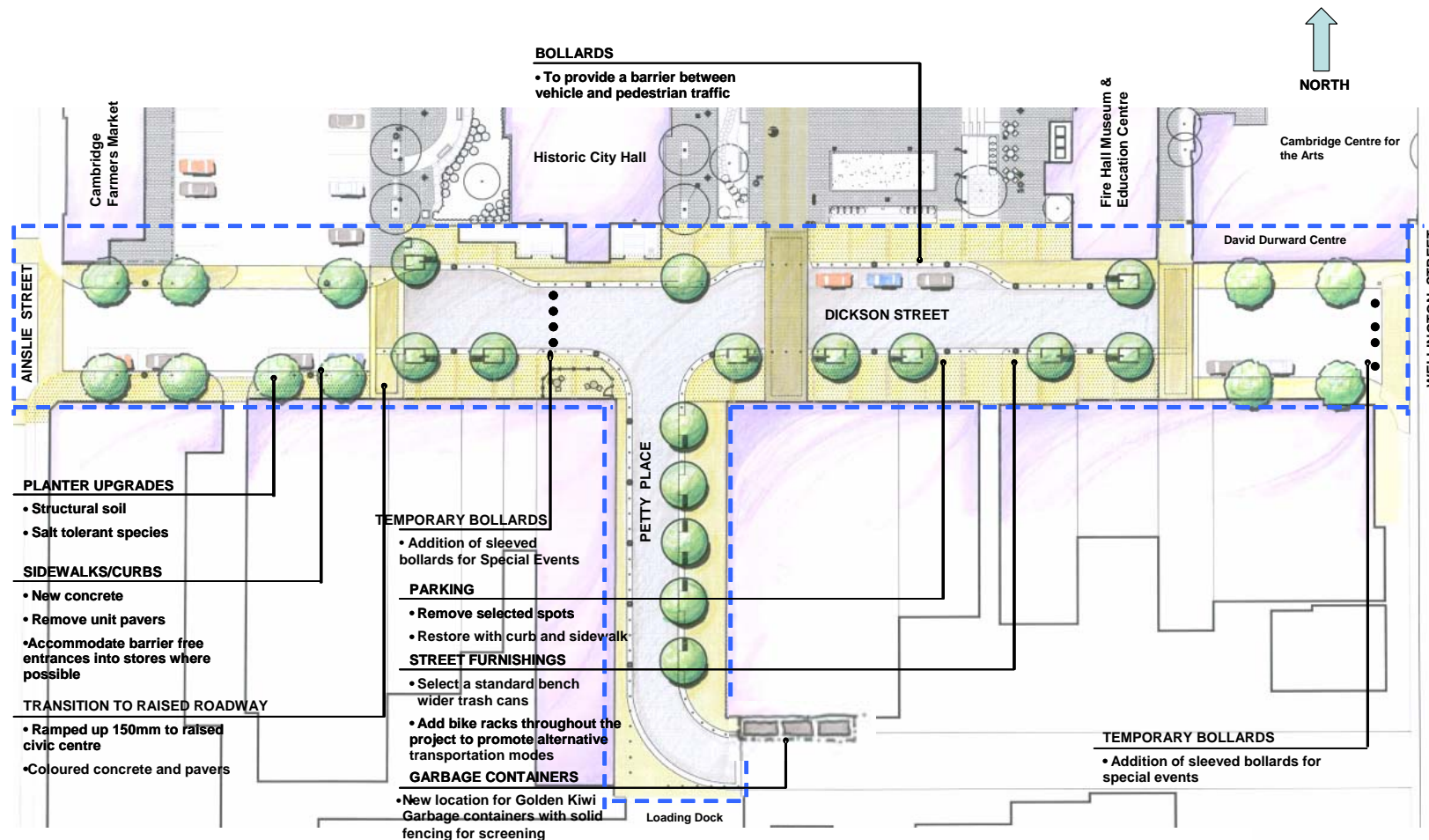
6 Option 1: Basic Streetscape Design



7 Option 2: Upgraded Streetscape Design



8 Option 3: Ultimate Streetscape Design



9 Alternative Design Options

Scope of Work	OPTION 1 Basic Streetscape Design	OPTION 2 Upgraded Streetscape Design	OPTION 3 Ultimate Streetscape Design
Sidewalk restoration (incl. replacement of unit pavers)		✓	✓
New curb & asphalt		✓	✓
Replace existing street trees	✓	✓	✓
New street trees		✓	✓
Precast concrete unit pavers on street			✓
Bollards for traffic control	✓	✓	✓
Proposed benches (to match Victor Stanley benches at Market)	✓	✓	✓
Garbage receptacles	✓	✓	✓
Watermain replacement			✓
Electrical ducts and outdoor receptacles			✓
Bike racks	✓	✓	✓
Total Cost	\$45,000	\$425,000	\$990,000



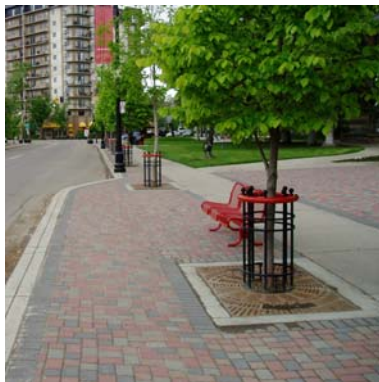
10 Sample Streetscaping Features



Benches (Existing Typical)



Pedestrian Oriented Street



Wider Sidewalks with Street Trees



Raised Crosswalk



11 Evaluation of Design Options

Impact	OPTION 1 Basic Streetscape Design	OPTION 2 Upgraded Streetscape Design	OPTION 3 Ultimate Streetscape Design
Traffic Impacts	○	○	○
Parking Impacts	●	◐	○
Pedestrian Impacts	○	◐	●
Emergency Vehicle Access	●	◐	◐
Property Impacts (Access to properties, property requirements)	○	○	○
Development Potential	○	◐	●
Streetscape Improvement	○	◐	●
Street Trees	○	◐	◐
Capital Costs	●	◐	○

Legend

○ ◐ ●

Least positive impact Most positive impact



12 Next Steps

- Complete technical evaluation of identified alternatives
- Selection of preferred alternative
- Final report to City Council

We want your input!

Provide your comments
on provided sheets

Speak to a member
of the Project Team

