



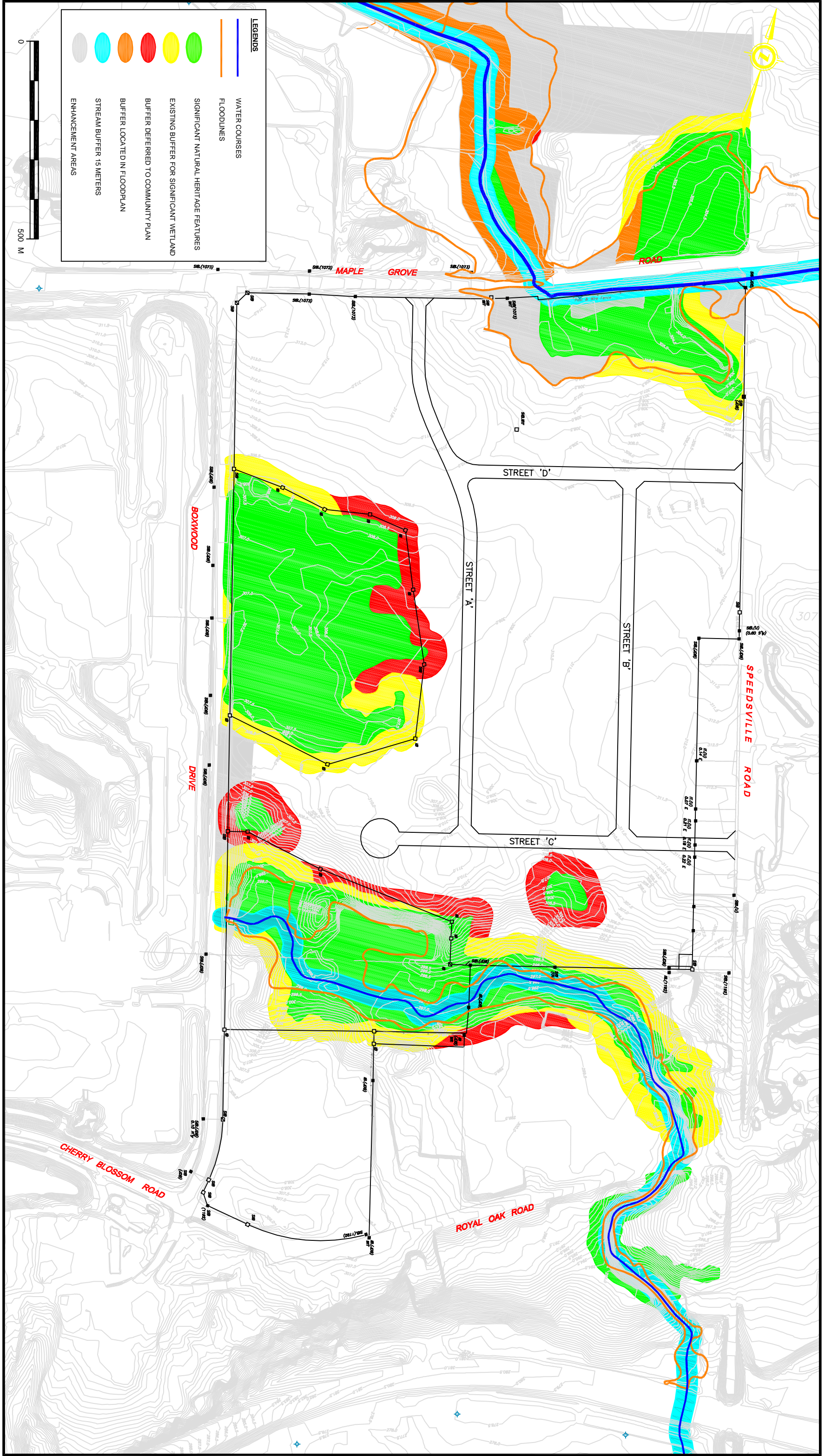
The Corporation
of the City
of Cambridge

BOXWOOD INDUSTRIAL SUBDIVISION SERVICING CLASS ENVIRONMENTAL ASSESSMENT, CITY OF CAMBRIDGE









Concept Plan 5



TRANSPORTATION • INFORMATION TECHNOLOGY • WATER



LEGENDS

-  WATER COURSES
-  FLOODLINES
-  SIGNIFICANT NATURAL HERITAGE FEATURES
-  EXISTING BUFFER FOR SIGNIFICANT WETLAND
-  BUFFER DEFERRED TO COMMUNITY PLAN
-  BUFFER LOCATED IN FLOODPLAN
-  STREAM BUFFER 15 METERS
-  ENHANCEMENT AREAS

