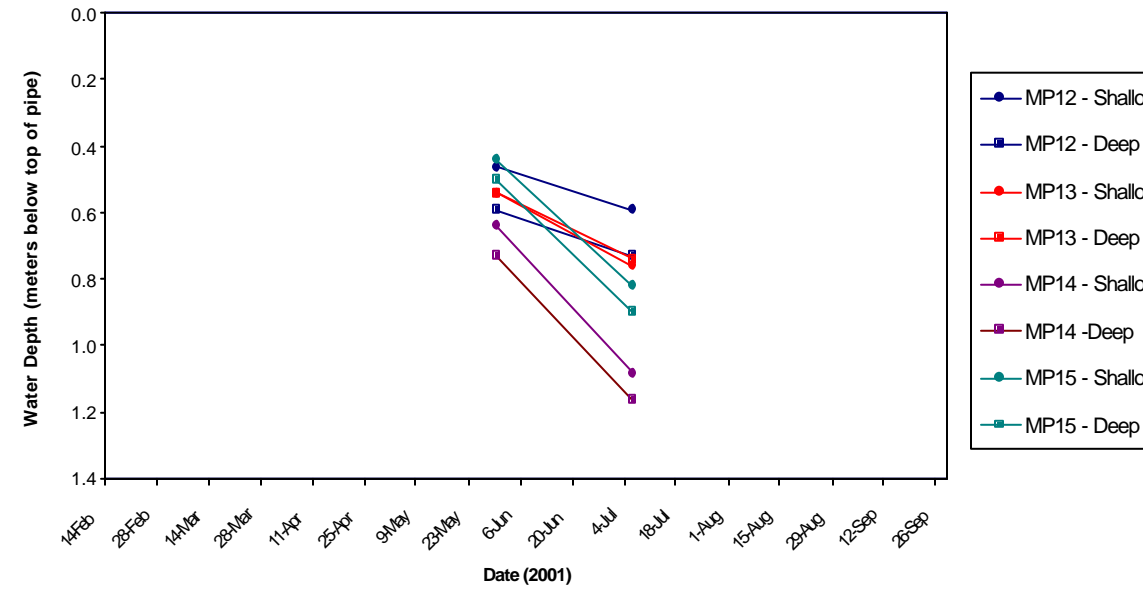
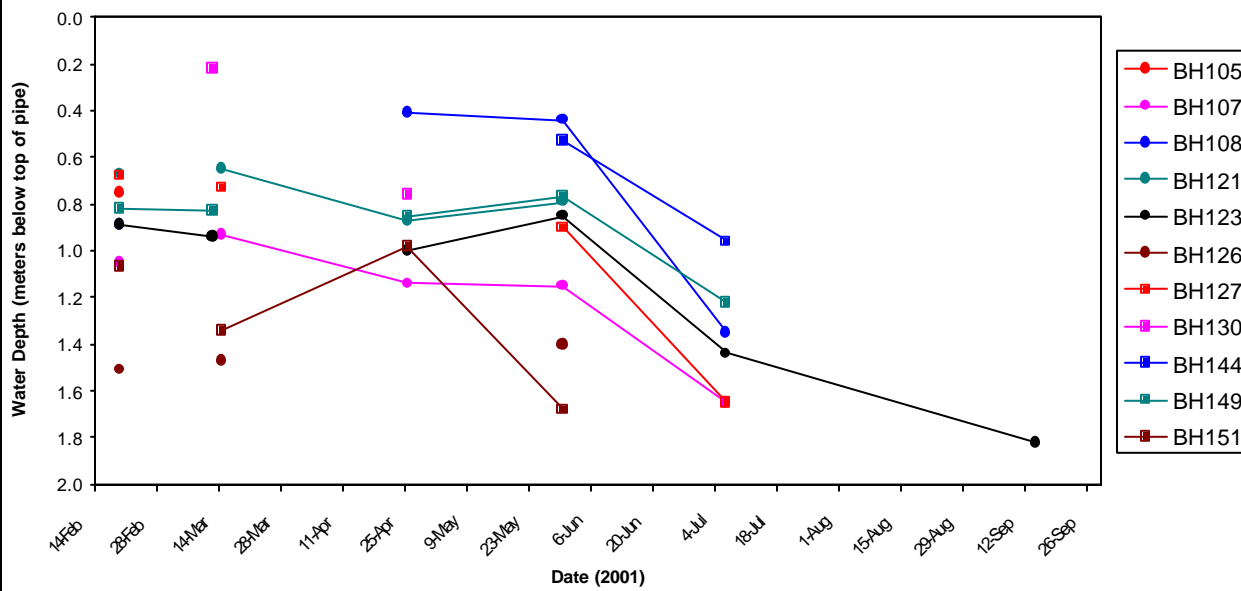
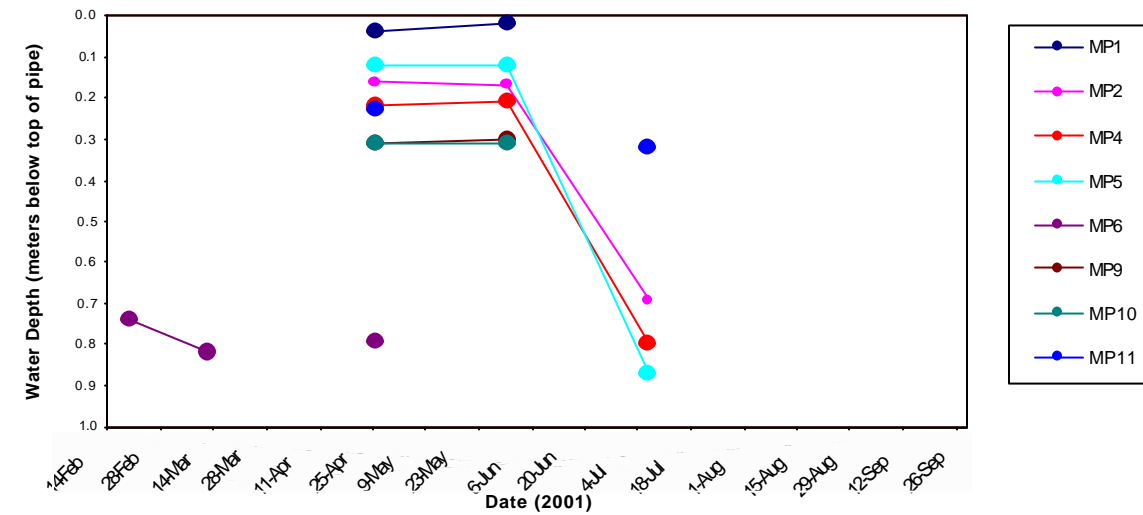
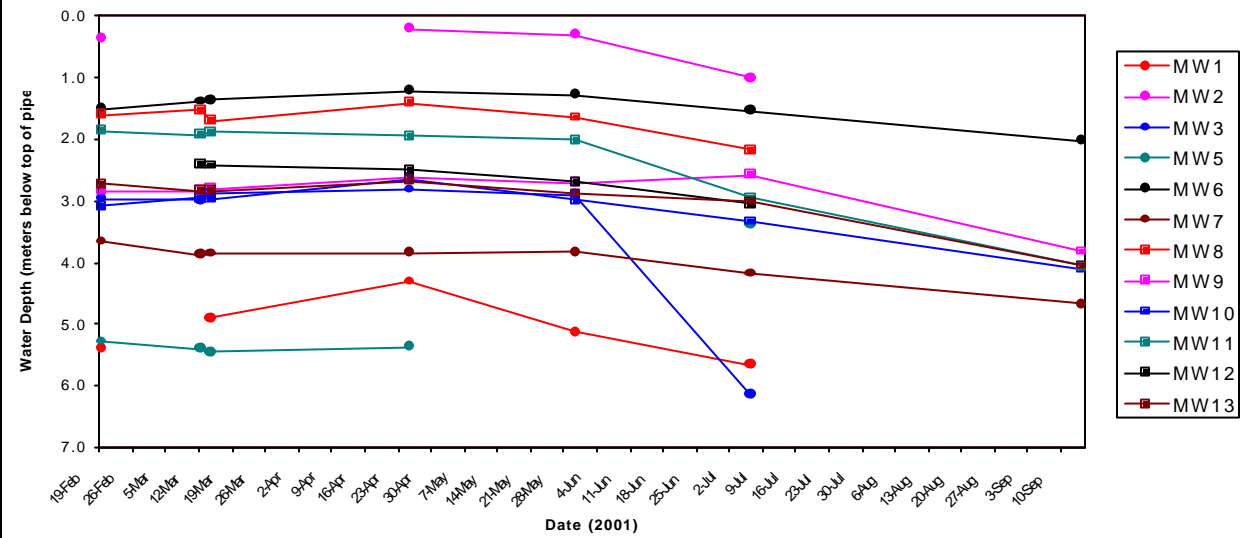



Forbes Creek Subwatershed Study




**THE CORPORATION
OF THE CITY
OF CAMBRIDGE**


**PLANNING &
ENGINEERING
INITIATIVES LTD.**

In association with:

- C. Portt and Associates
- Dougan and Associates
- Naylor Engineering Associates
- Schroeter and Associates
- AgPlan
- Paradigm Transportation Ltd.

Water Level Graphs

Scale: NTS

Date: July 2002

Project No.: K1143

Figure: B1.5.4