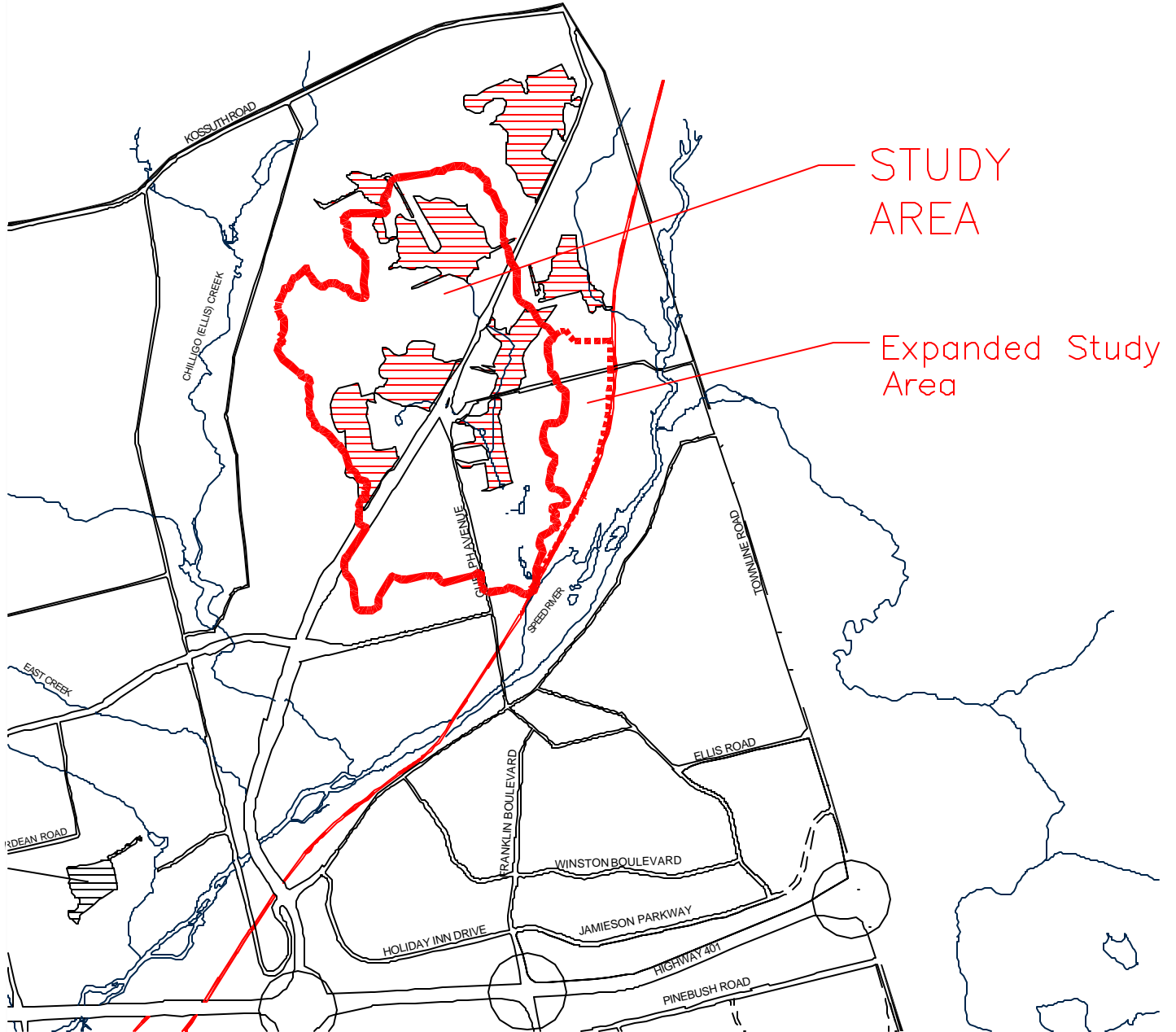




Environmentally Sensitive Policy Area



Locally Significant Natural Area



SOURCE: City of Cambridge Official Plan (Sept. 1999 Consolidation) MAP 9  
 This information is provided for convenient reference only. To ensure accuracy,  
 the complete original documents of approval should be consulted.



In association with:  
 C. Portt and Associates  
 Dougan and Associates  
 Naylor Engineering Associates  
 Schraeter and Associates  
 AgPlan  
 Paradigm Transportation Ltd.

### Forbes Creek Subwatershed Study

Environmentally Sensitive  
 Policy Areas and  
 Locally Significant  
 Natural Areas

Scale : NTS

Date: July 2002

Project No.: K1143

Figure A2.2.4

