
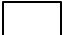

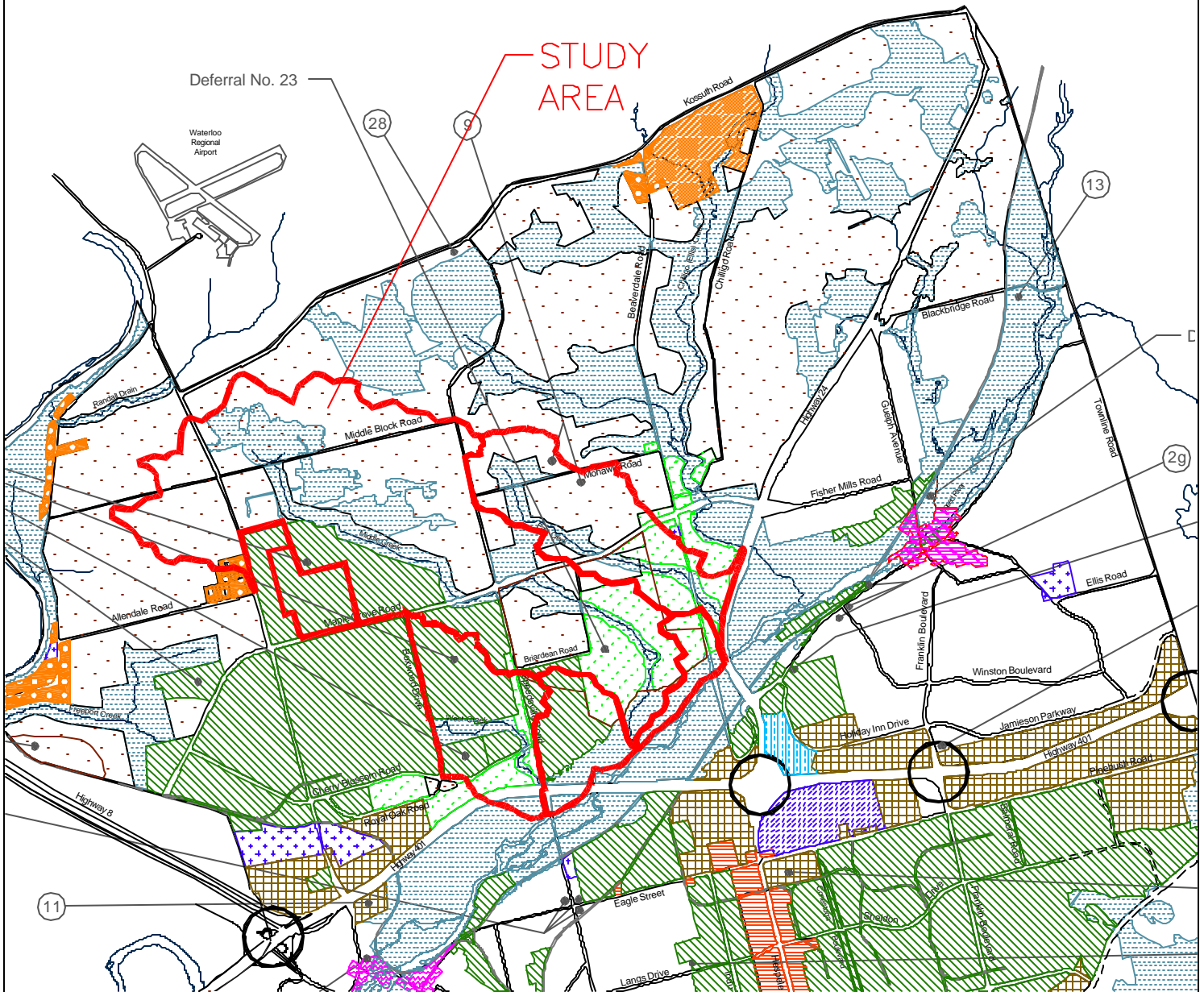


-  Class 1 (Prime) Agricultural Resource District
-  Class 1 (Significant Natural Features) Open Space
-  Class 2 (Major Recreation) Open Space
-  Class 2 (Suburban) Residential
-  Class 1 (Urban) Residential
-  Class 3 (Rural) Residential
-  Class 2 (General) Industrial
-  Hespeler Village (See Map 4) Community Core Area



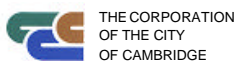
SOURCE: City of Cambridge Official Plan (Sept. 1999 Consolidation) MAP 15
 This information is provided for convenient reference only. To ensure accuracy, the complete original documents of approval should be consulted.



In association with:
 C. Partt and Associates
 Dougan and Associates
 Naylor Engineering Associates
 Schroeter and Associates
 AgPlan

Hespeler West Subwatersheds Study

General Land Use
Plan



Scale : NTS

Date: April 2003

Project No.: K1253

Figure A2.2.2