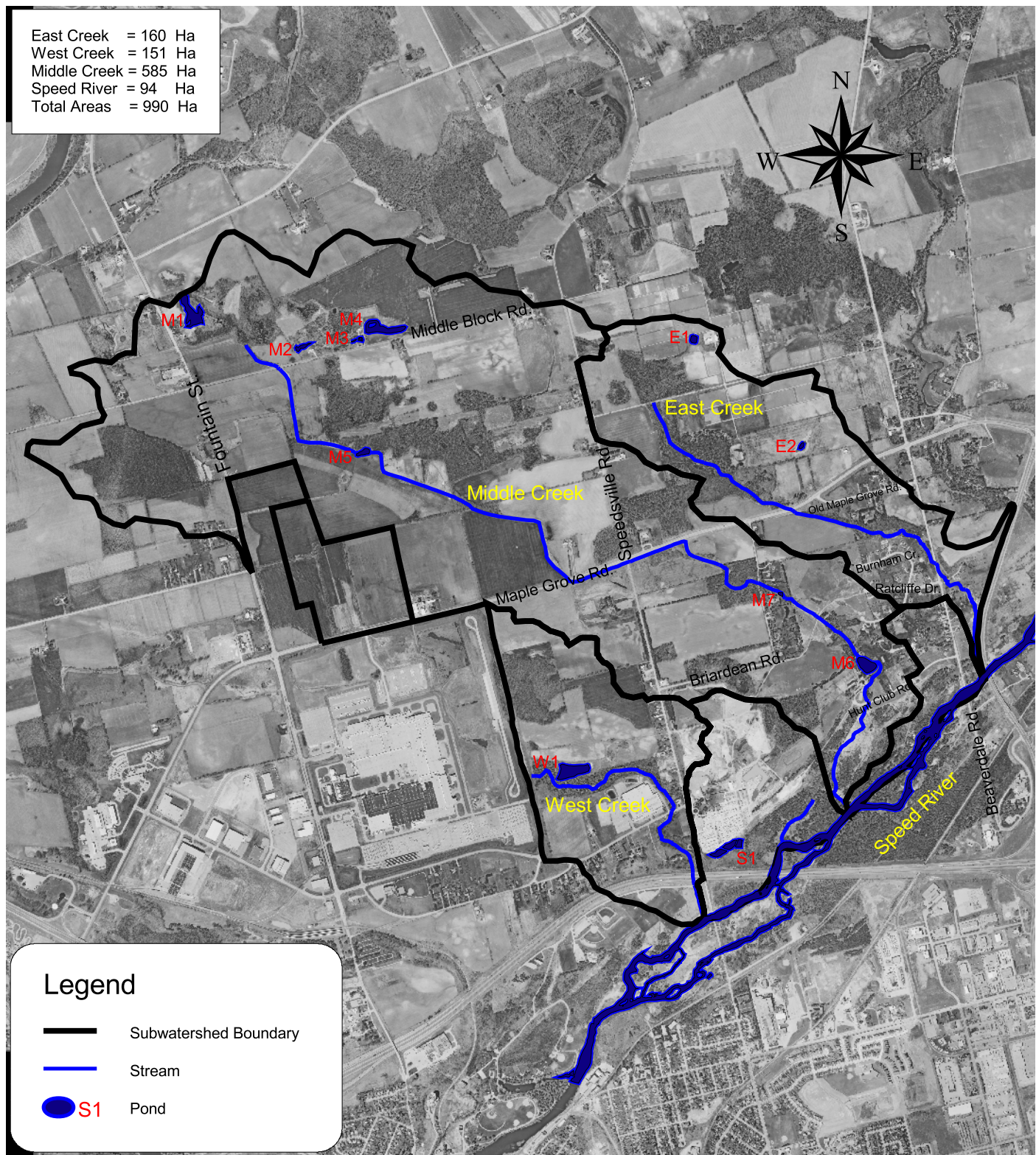


East Creek = 160 Ha
 West Creek = 151 Ha
 Middle Creek = 585 Ha
 Speed River = 94 Ha
 Total Areas = 990 Ha



Produced by Planning & Engineering Initiatives Ltd., under Licence with the Ontario Ministry of Natural Resources © Queen's Printer for Ontario, 2001
 Produced using information under License with the Grand River Conservation Authority © Grand River Conservation Authority, 2001
 Produced using information under License with the City of Cambridge © City of Cambridge, 2001



In association with:
 C. Portt and Associates
 Dougan and Associates
 Naylor Engineering Associates
 Schroeter and Associates
 AgPlan

Hespeler West Subwatersheds Study

Subwatershed Streams and Ponds

Scale: 1 : 30 000
Date: September 2004
Project No.: K1253
Figure: A1.1.2