
For Immediate Release

Proposed Ward Boundary Changes for Cambridge Creates New Opportunity for Community Representation

Cambridge, Ontario July 21, 2008... Recommendations from the Cambridge Council Ward Boundary Taskforce (WBTF) point to a system that will increase the number of council representatives to better reflect the needs of a growing community.

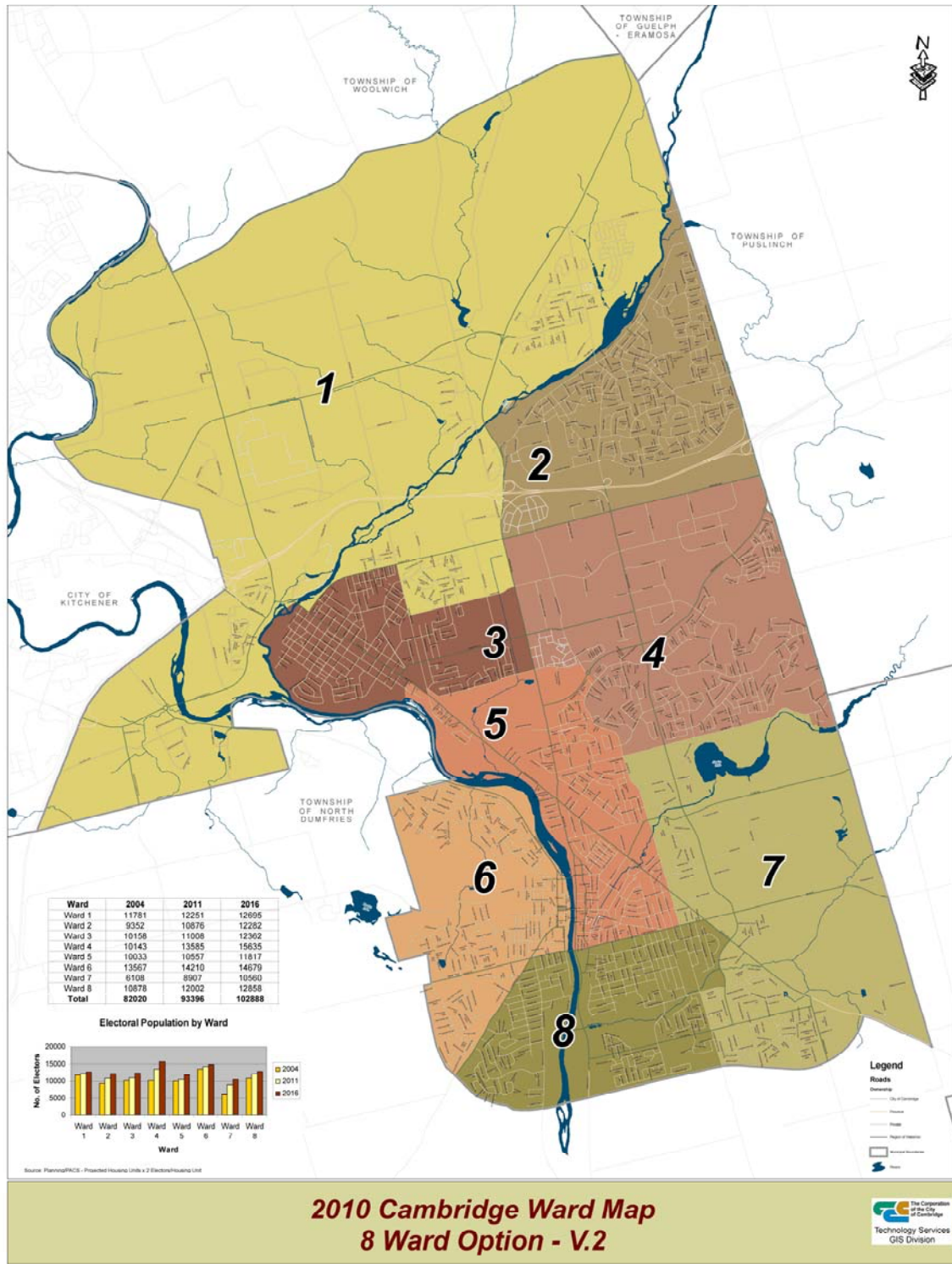
Cambridge Council created the task force to review the current ward structure and to provide recommendations on the best way to enhance the local municipal ward pattern to reflect growth and changes in the community. Considerations around how best to deliver balanced access to local government, changing city needs and the workload balance for each councillor were evaluated.

"The ward boundary review began in spring 2005 to respond to the municipalities' growth and to review allocation of Council workloads to enhance representation for the community," says Ben Tucci, Chair of the WBTF. The current ward boundaries were established in 1999. Cambridge population growth between 2001 and 2006 was over 9 per cent.

In addition to regular meetings, the task force held two public information meetings to gain further input into the evaluation process. The scope of the taskforce was to provide guidance to city council on a number of criteria: effective representation; protection of communities of interest and neighbourhoods; consideration of representation by population; consideration of present and future population trends; consideration of physical features as natural boundaries; one person, one vote; compact and contiguous wards; geographic shape of the ward to protect against gerrymandering; and to seek a fair approach and not to change wards to gain an unfair advantage.

The task force looked at three options ranging from remaining status quo to having the representation of two councilors per ward. A report from the group will suggest that the system move to 8 wards with one councillor per ward.

"The result would increase the number of councilors and provide for a greater opportunity for representation within the community to better serve the growing needs of Cambridge," Tucci adds. The task force is now set to present its recommendation to council in the fall. It is hoped to have the new ward system in place for the next election.



**2010 Cambridge Ward Map
8 Ward Option - V.2**



Ward Boundary Task Force Members:
 Doug Craig, Cambridge Mayor
 Karl Kiefer, Councillor, Ward 2
 Ben Tucci, Councillor, Ward 4 (Chair)
 Linda Whetham, Councillor, Ward 3
 Alex Mitchell, City Clerk (staff liaison)

Media Contact:
Ben Tucci,
Chair
Ward Boundary Task Force
tuccib@cambridge.ca
519.740.4517 ext 4734

The City of Cambridge is one of the fastest growing areas in the country. It is strategically located astride highway 401 in Southwestern Ontario, part of Canada's Technology Triangle. In 2008, the population reached over 125,000 people. With a multicultural mix and a strong foundation of support services, Cambridge has a diverse economic base with leading industries in manufacturing, automotive, high technology, pharmaceutical, business and financial services and hospitality/retail. The Corporation of the City of Cambridge is an employer with a work environment that offers the opportunity to provide service to the community through creativity and innovation, and with opportunities for career growth and advancement. Based on the 2007 BMA Management Consulting Inc Municipal Study, the City of Cambridge is one of only four municipalities in the province that is debt free.

For more information on the area or the corporation visit www.cambridge.ca
The City of Cambridge press room is located at <http://www.cambridge.ca/article.php?sid=176>

To opt out of the news release distribution, please send an email to Linda Fegan
feganl@cambridge.ca